



Cardinia Shire Council

Fishing Policy

Prepared by:

Cardinia Shire Council
Operations and Sustainable Communities Units

Adopted: November 2011

Published

© Cardinia Shire Council 2009

Henty Way, Pakenham
PO Box 7, Pakenham Vic 3810

Phone: 1300 787 624
Fax: (03) 5941 3784
Email: mail@cardinia.vic.gov.au
Web: www.cardinia.vic.gov.au

1. PURPOSE

To provide safe recreational fishing opportunities for the Cardinia community.

2. DEFINITIONS

- Fishing – the activity of catching fish, either for food or as a sport.-

Recreational Fishing Licence (RFL) – A RFL covers, all forms of recreational fishing in all of Victoria's marine, estuarine and freshwaters. Fishing is prohibited without a current licence. See 5.2 - Prohibited Fishing.

Objectives

The goal of this policy is to provide Council with direction for the ongoing provision of recreational fishing opportunities within the Shire through:

- Providing safe venues for the community to fish; and
- Provide a safe venue for the non-fishing public to also utilise and access.

3. BACKGROUND

There are a number of waterways across the Cardinia Shire with the majority of these managed and maintained by Melbourne Water (MW), Parks Victoria (PV) and the Department of Sustainability and Environment (DSE). These include Cardinia and Toomuc Creeks, Bunyip River, retarding basins, wetlands in a number of developments, drains, Lang Lang foreshore etc. The majority of these waterways are combined with passive uses including shared paths, flora and fauna, environmental and other elements.

Council also owns and manages a large number of waterways. For irrigation purposes some Council recreation reserves also contain dams including Garfield, Koo Wee Rup, Mountain Road (Cockatoo) and Officer Recreation Reserves. Some of these are fenced to restrict public access.

Council currently allows fishing in Emerald Lake Park and Garfield Recreation Reserve dam.

This policy provides guidance on fishing in Cardinia Shire on Council managed waterways only.

5. POLICY

5.1 Suitable fishing locations

Council will allow recreational fishing in a number of locations throughout the Shire. Suitable locations for fishing will be assessed by, but not limited to:

- Access to the site;
- Supporting amenities eg. car parking, shelters, rubbish bins etc;
- Hard stand areas including platforms, rocks and other areas that will assist in separating anglers from the general public.
- Assessment of risk for persons fishing and also general community members;
- Environmental and amenity considerations;
- Site suitability; and
- Support from Department of Primary Industry (DPI) with grants and in stocking the waterways.

5.2 Prohibited fishing

- Fishing is prohibited in Council owned or managed waterways, unless officially endorsed by Council.
- Fishing is prohibited from boats
- Fishing must be carried out in accordance with Victorian Recreational Fishing Guidelines
- Fishing is prohibited without a current licence. Unless you are exempt, a RFL is required when taking, or attempting to take, any species of fish by any method including line fishing, bait collection, gathering shellfish, yabby fishing etc.
- Fishing is prohibited half an hour prior to sunrise and half an hour past sunset.

5.3 Water testing

To ensure public safety at approved fishing locations, Council will test water quality regularly.

5.4 Alcohol Consumption

Alcohol consumption is not permitted in public places as per Local Law Part 9 Clause 25.1 *‘A person must not in any public place consume any liquor or have in his or her possession any liquor in any open container, except at a function lawfully being held.’*

5.5 Cleaning of Fish

Cleaning of fish is not permitted in the surrounds of waterways. Any rubbish generated must be disposed of or taken from the site.

5.6 Rubbish removal

All rubbish generated through the activity of fishing including fishing line, must be removed from fishing locations.

6. PENALTY NOTICES

- Fishing must be conducted at designated locations as signposted. See Council web for details at www.cardinia.vic.gov.au
- Fishing in non approved areas may incur a penalty notice
- The area where persons are fishing must be left clean and tidy
- Fish cleaning is not permitted in designated locations or surrounding areas

A breach of any of the above may incur a penalty notice in accordance with Council Local Law Number 10.

7. APPROVED AND PROPOSED LOCATIONS

See attachment one (1)

8. RELATED DOCUMENTS

- Cardinia Shire Council Open Space Plan
- Cardinia Shire Council Recreation Plan
- Victorian Recreational Fishing Guidelines
- Council Local Law Number 10.

APPENDIX ONE

Council has approved fishing in the following locations:

- Emerald Lake Park, Emerald Lake Rd, Emerald;
- Garfield Recreation Reserve dam, Beswick St, Garfield;
- Cardinia Lakes, Windermere Boulevard, Pakenham; and

Council will approve fishing in the following locations on the provision of appropriate infrastructure:

- Lakeside Pakenham, Lakeside Boulevard, Pakenham – west end only;
- Lilliput Pond, Lilliput Lane, Pakenham.

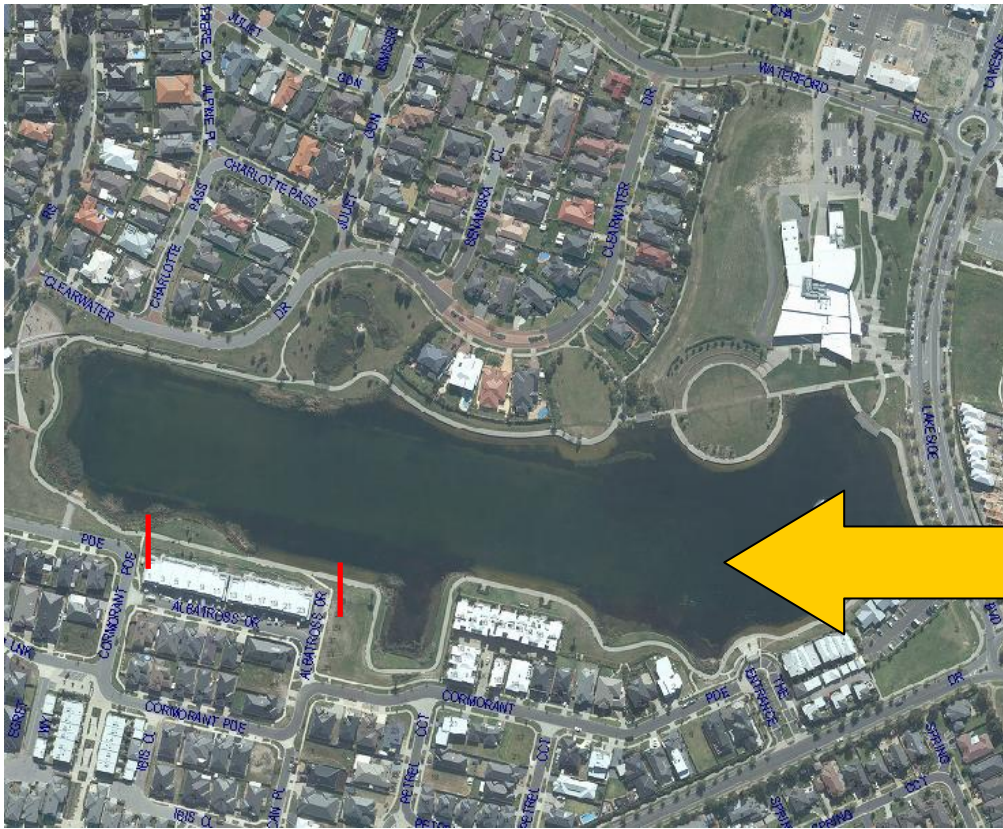
See proposed locations – attached.



Emerald Lake Park



Garfield Recreational Reserve Dam



- Lakeside Pakenham, Lakeside Boulevard, Pakenham – west end only (In between Red lines is proposed area to be available for fishing)



Cardinia Lakes, Windermere Boulevard, Pakenham



Lilliput Lane, Pakenham Upper