

CARDINIA SHIRE MUNICIPAL EMERGENCY ANIMAL WELFARE SUB-PLAN

Version 1.0 August 2022



AGRICULTURE VICTORIA



Contents

Acronyms.....	6
Glossary.....	8
Purpose.....	11
Aim and objectives.....	11
Audit.....	11
Plan development, endorsement, testing & review	12
Context	12
Plan activation.....	14
Business continuity	14
Roles and responsibilities.....	14
Operational arrangements.....	15
Information sharing	19
Process for requesting additional resources.....	19
Financial measures.....	19
Appendix 1 Animal Welfare Municipal Contact information	22
Appendix 2 Equestrian Venues and Clubs in Cardinia Shire	26
Appendix 3 Holding Yards and Hitching Options in Cardinia Shire	28



Acronyms

AVA	Australian Veterinary Association (Victorian Division)
AWC	Animal Welfare Commander
CFA	Country Fire Authority
DAMP	Domestic Animal Management Plan
DHHS	Department of Health & Human Services
DJPR	Department of Jobs, Precincts and Regions
DELWP	Department of Environment, Land, Water and Planning
EMV	Emergency Management Victoria
EMMV	Emergency Management Manual Victoria
EMT	Emergency Management Team
EPA	Environment Protection Authority
IC	Incident Controller
IMT	Incident Management Team
IMS	Incident Management System
LGO	Local Government Officer
MAV	Municipal Association of Victoria
MECC	Municipal Emergency Coordination Centre
MEMP	Municipal Emergency Management Plan
MERC	Municipal Emergency Response Coordinator
MERO	Municipal Emergency Resource Officer
NLIS	National Livestock Identification System
PAS	Pet Animal Shelter
POCTA	Prevention of Cruelty to Animals Act, 1986
POWE	Principal Officer Wildlife Emergencies
PV	Parks Victoria
RAC	Regional Agency Commander
RAWC	Regional Animal Welfare Commander

RSPCA	Royal Society for the Prevention of Cruelty to Animals
SAC	State Agency Commander
SAWC	State Animal Welfare Commander
SCC	State Control Centre
SERO	State Emergency Response Officer (of Victoria Police)
SES	Victoria State Emergency Service
SIGs	Special Interest Groups
VEAWC	Victorian Emergency Animal Welfare Committee
VicPol	Victoria Police
VFF	Victorian Farmers Federation

Glossary

Agency	A government agency, including commonwealth, state or local government authority.
Animal	Refer to the definition in Prevention of Cruelty to Animals Act 1986 which basically includes any live member of a vertebrate species (other than human) and some crustaceans.
Animal welfare	How an animal is coping with the conditions in which it lives. An animal is in a good state of welfare if (as indicated by scientific evidence) it is healthy, comfortable, well nourished, safe, able to express innate behaviour, and if it is not suffering from unpleasant states such as pain, fear, and distress. Good animal welfare requires disease prevention and veterinary treatment, appropriate shelter, management, nutrition, humane handling and humane slaughter/killing. Animal welfare refers to the state of the animal; the treatment that an animal receives is covered by other terms such as animal care, animal husbandry, and humane treatment.
Animal Welfare Commander	A role established by Agriculture Victoria within DJPR to lead the agency's emergency animal welfare support services at the state, regional and/or incident level.
Biosecurity	The protection of the economy, the environment, social amenity or human health from negative impacts associated with the entry, establishment or spread of animal or plant pests and disease, or invasive plant and animal species.
Command	The direction of personnel and resources of an agency in the performance of that organisation's role and tasks. Authority to command is established in legislation or by agreement within an agency
Communication	The engagement and provision of information across agencies and proactively with the community to prepare for, respond to and recover from emergencies.
Community Connection	The understanding of and connecting with trusted networks, trusted leaders and all communities to support resilience and decision making.
Companion Animal	Any non-human vertebrate animal kept for the purpose of companionship, recreation, protection or work.
Consequence	The management of the effect of emergencies on individuals, the community, infrastructure and the environment.
Control	The overall direction of response activities in an emergency. Authority for control is established in legislation or in an emergency response plan and carries with it the responsibility for tasking other agencies in accordance with the needs of the situation. Control relates to situations and operates horizontally across agencies.
Control agency	The agency responsible for leading the response to a particular type of emergency
Coordination	The bringing together of agencies and resources to ensure effective response to and recovery from emergencies. The main functions of co-ordination are to: <ul style="list-style-type: none"> • Ensure effective control has been established and maintained; • Ensure effective information sharing; and • Systematic acquisition and allocation of resources in accordance with the requirements imposed by emergencies.
Domestic Animal Businesses	Licensed premises under the Domestic Animals Act 1994 including pet shops, dog/cat breeding and boarding establishments and dog training establishments.

Emergency	An emergency due to the actual or imminent occurrence of an event which in any way endangers or threatens to endanger the safety or health of any person in Victoria or which destroys or damages, or threatens to destroy or damage, any property in Victoria, or endangers or threatens to endanger the environment or an element of the environment in Victoria
Emergency Management Team	A team which assists a controller in formulating a response strategy and in its execution by all agencies, and which assists the Emergency Response Coordinator in determining resource acquisition needs and in ensuring coordinated response to an emergency.
Emergency Relief	The provision of life support and essential needs to persons affected by an emergency
Emergency Relief Centre	A building or place established to provide life support and essential needs to persons affected by an emergency (including evacuees). Emergency relief centres are established on a temporary basis to cope with the immediate needs of those affected during the initial response to the emergency. They do not imply any longer-term use of facilities as a location for recovery services
Emergency Response Coordinator	A person appointed as state, regional, municipal or incident emergency response co-ordinator, whose role is to co-ordinate the response to an emergency.
Evacuation	The planned relocation of persons from dangerous or potentially dangerous areas to safer areas and eventual return.
Fodder	Feed for livestock such as hay or pre-prepared feedstuffs designed specifically for livestock.
Livestock	Any animal kept for the purposes of primary production, including cattle, sheep, pigs, poultry, ratites, buffalo, camels, alpacas, goats, deer or horses, including where used for recreation.
Managed animal	Any animal including wildlife and exotics that is owned or possessed or is under a person's care, control or supervision.
Organisation	Any non-government or not for profit entity, company or authority.
Person in charge of animals	A person who is the owner or has the animal in their possession or custody, or under the person's care, control or supervision and any employee or agent of the owner of the animal.
Principal Officer Wildlife Emergencies	A role established by DELWP to lead the agency's emergency wildlife welfare response at state level and support response activities at a regional or incident level.
Recovery	The assisting of persons and communities affected by emergencies to achieve a proper and effective level of functioning
Salvage slaughter	The processing of animals through an abattoir. Livestock impacted by an emergency, suitable for salvage slaughter are those that do not show signs of distress or disablement and are fit enough to be transported.
State Agency Commander	A role established within state government departments like DJPR and DELWP to coordinate its emergency response arrangements across the organisation at a State level.
Support agency	An agency which provides services, personnel or material to support or assist a control agency or affected persons.
Triage	The process of determining the priority of veterinary treatment based on the severity of an animal's condition. This rations veterinary treatment efficiently when resources are insufficient for all animals to be treated immediately.

Triage Site	A site where animals are assessed and their treatment needs (including euthanasia) are determined. Sites may include capacity for provision of first aid but will not include facilities for ongoing treatment.
Victorian Emergency Animal Welfare Committee	A consultative forum chaired by DJPR that provides ongoing leadership and oversight in the development and review of plans and policies relating to emergency animal welfare management in Victoria.
Wildlife	Any vertebrate animal indigenous to Australia, some non-indigenous vertebrates (deer and game birds declared to be wildlife under the <i>Wildlife Act, 1975</i>), any terrestrial invertebrates listed as threatened under the <i>Flora and Fauna Guarantee Act, 1988</i> , and does not include fish within the meaning of the <i>Fisheries Act, 1995</i> .

1. Purpose

This Municipal Emergency Animal Welfare Plan has been produced pursuant to Section 20(1) of the Emergency Management Act 1986 and assists in the management of animal welfare during an emergency. The Plan has been developed with reference given to the Victorian Emergency Animal Welfare Plan (VEAWP). These arrangements have been prepared as a sub plan to the Municipal Emergency Management Plan (MEMP) for Cardinia Shire.

2. Aim and objectives

The aim of the Municipal Emergency Animal Welfare Plan is to define agreed arrangements for the management of emergency animal welfare within the municipality including:

- Roles and responsibilities of key agencies and stakeholders
- Operational interactions between key agencies and stakeholders
- Resources (personnel, facilities, equipment, services) to be used in the delivery of animal welfare services.

Emergency animal disease have been identified in Municipal Emergency Management Plan's risk register (Community Emergency Risk Assessment CERA) as having a high risk that could impact the welfare of companion animals and livestock within the municipality. Other natural disasters such as Flood, Storm and Bushfire also have a high risk rating as per the Cardinia Shire CERA. Consequently, this plan has been developed to guide local emergency animal welfare arrangements for these risks with emphasis given to:

- Identification of Affected Animals
- Management of Evacuated Animals at Emergency Relief Centres
- Management of Stray or Roaming Animals
- Animal Welfare Assessment
- Veterinary Treatment and Triage
- Humane Destruction or Salvage Slaughter
- Carcass Disposal
- Provision of Emergency Pet Food, Livestock Fodder and Water
- Coordination of Donations and Offers Of Assistance

The overarching objective of this plan is to:

- Support the MEMP
- Identify the criteria for activating this plan
- Contribute to enhanced public safety and community resilience within the municipality through effective planning and management of animals in emergencies
- Ensure the welfare of animals within the municipality are better considered and protected from suffering during and immediately following emergencies.

3. Audit

This Plan will be reviewed not later than November 2025 and then via three yearly review from that date and no later than November 2025.

Urgent update of this Plan is permitted if there is significant risk that life or property will be endangered if the plan is not updated (EM Act 2013 s60AM). Urgent updates come into effect when published on the EMV website and remain in force for a maximum period of three months.

4. Plan development, endorsement, testing and review

This plan has been produced by the authority of the Municipal Relief and Recovery Sub-Committee pursuant to Section 20(1) of the Emergency Management Act 1986. It is endorsed by the Municipal Emergency Management Planning Committee (MEMPC).

The Municipal Emergency Animal Welfare subplan should be read in conjunction with the MEMP, the SEMP and guidance from the Victorian Emergency Animal Welfare Plan. The content of this plan and all appendices is to be reviewed every 3 years or after an emergency involving activation of this plan.

Testing and exercising of this subplan will occur as required by the Cardinia Shire MEMPC. For full details in regard to the Cardinia Shire MEMPC exercising schedule please see the Cardinia Shire MEMP

5. Context

Cardinia Shire is 1,280km² in size, 65% or 832km² of which is primary production land. According to the Bureau of Statistics for 2015/16, Cardinia Shire's output for animal products generated over \$160 million, making it an important contributor to the local economy and home to a significant population of livestock at any given time.

Property Identification Codes (PICs) are allocated to a parcel of land that may consist of more than one block within the one locality, operating as part of one livestock enterprise. As long as the land on which the livestock are agisted and leased is in the same locality (in the same shire or in a neighbouring shire), then both blocks of land can be covered by the 'home' PIC. In Cardinia Shire there are approximately 5,754 PIC registrations.

Species	Total PICs	PICs > 0 Head	Head
Alpaca	212	189	938
Camels	2	2	8
Cattle	2,828	2,322	112,859
DEER	13	10	131
Goats	360	321	2,906
Horses	966	867	6,939
Pigs	105	85	377
Poultry	530	450	5,585,347
Sheep	738	622	16,780

Table 1 – PIC Register Summary Cardinia Shire

Cardinia Shire has a livestock exchange in Pakenham which trades over 170,000 head of livestock annually as well as a large-scale abattoir which employs approximately 300 workers. There are two agricultural societies in operation with the Shire:

- Bunyip and District Agricultural Society Inc
- Lang Lang Pastoral, Agricultural and Horticultural Society

Poultry farming is also significant within the shire with at least 50 large scale sites in operation.

The Shire is home to significant equestrian activity. A thoroughbred racecourse operates within the municipality at Tynong with weekly race meets and training activities on site. An additional 23 registered equestrian clubs currently operate within the shire.

Cardinia Shire also hosts a large range of native and wild animals and a growing number of companion animals not limited to dogs, cats, horses, birds, fowl, aquatic types and reptiles. In the year 2021/2022, 2,057 dogs and 3,082 cats were registered. There is potential for a large number of these animals to be displaced, injured or killed during an emergency or incident.

Table 2 - Equestrian Facilities within the Cardinia Shire

Reserve/Location	Club Name	Size
Pakenham Racing Club, Nar Nar Goon Longwarry Road, Tynong	Pakenham Racing Club	
Cannibal Creek Reserve, Garfield North Road, Garfield North	Cannibal Creek Pony Club	14.8 HA
	Mt Cannibal Adult Riding Club	
	West Gippsland Quarter Horse Association	
	West Gippsland Aust Stock Horse Branch	
Gembrook Riding Reserve, Cnr Gembrook Road and Red Road, Gembrook	Gembrook Riding Club	0.7Ha
Huxtable Road Reserve, Huxtable Road, Pakenham Upper	Pakenham Upper Riding Club	18.6Ha
	Pakenham Pony Club	
Rosie Bysouth Reserve, Hillside Road, Cockatoo	Cockatoo and District Pony Club	3.8Ha
	Cockatoo and District Riding Club	
Officer Pony Club Grounds, Brown Road, Officer	Officer Pony Club	3.7Ha
	Officer Equestrian Club	
Upper Beaconsfield Recreation Reserve, Burton Road, Upper Beaconsfield	Upper Beaconsfield Riding Club	3.1Ha
	Upper Beaconsfield Pony Club	
Yarrabubba Recreation Reserve, Yarrabubba Road, Nar Nar Goon North	Nar Nar Goon Riding Club	2.3Ha
	Nar Nar Goon Pony Club	
Catani Recreation Reserve, Taplins Road, Catani	Gippsland Pleasure Harness Society	2.1Ha
Koo Wee Rup Recreation Reserve, Denhams Road, Koo Wee Rup	Koo Wee Rup Horse Riders Club	1.7Ha
Lang Lang Showgrounds, Westernport Road, Lang Lang	Port Phillip Show Jumping Club	7Ha
Pound Road Reserve, Pound Road, Bunyip	Bunyip and District Pony Club	20Ha
	Lillico and District Pony Club	
	Bunyip Equestrian	
775 Five Mile Road, Pakenham	Riding for the Disabled Association	5.6 Ha

6. Plan Activation

The Municipal Emergency Management Officer (MEMO) will activate the plan following advice from the Municipal Emergency Response Coordinator (MERC), DJPR – Agriculture Victoria, or DELWP. Triggers to activate the plan may include:

- ERC activation
- Carcass disposal need
- Donated livestock feed or water supply need

In large scale emergencies, the MEMO will oversee the implementation of the plan in consultation with the DJPR MECC liaison or DJPR Animal Welfare Liaison Officer assigned to the emergency.

7. Business Continuity

Priority will be given to emergency animal welfare services over normal animal welfare services in the event of an emergency, at the discretion of the MERC or MEMO.

8. Roles and Responsibilities

8.1 Owners/Residents

The primary responsibility and duty of care for animals always remain with the person in charge of the animal (the owner or carer). They should have a rehearsed emergency plan for their animals which includes evacuation kit, suitable transport where applicable, multiple evacuation routes where possible, and water and feed stocks.

Individuals should seek information to make informed decisions on how to prepare for emergencies and should help meet their own relief and recovery needs wherever possible. Following an emergency, individuals and households need to be as self-sufficient as possible, because in the first instance, agencies will offer emergency support to the most vulnerable community members. In the event of an emergency, animal welfare may be compromised if management arrangements are not effectively in place.

Owners and carers of animals should also understand the signs of disease in the types of animals on their properties and have in place appropriate biosecurity measures for their risk.

Further advice to assist animal owners to integrate the welfare of their animals into their emergency and biosecurity plans is available from the Agriculture Victoria website www.agriculture.vic.gov.au.

Microchipping and registering animals such as dogs, cats and horses can greatly assist in the identification and tracking of stray or relocated animals during an emergency. The National Livestock Identification System (NLIS), Australia's system for identifying and tracking beef and dairy cattle, sheep and goats, can be used in an emergency event to assist in the identification of relocated or stray livestock animals.

8.2 Government Agencies

Government agencies have responsibilities in all phases (mitigation/response/relief/recovery) of animal emergencies as per the SEMP. Below is a summary of these responsibilities. For a detailed description of these please see the SEMP.

Responsibilities of Government Agencies

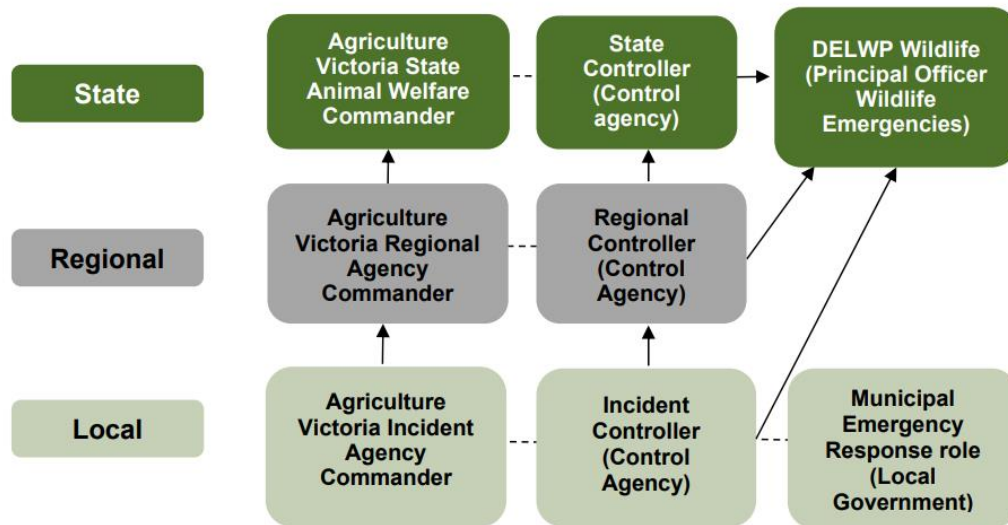
DJPR - Agriculture Victoria	DELWP	Local Government
<p>Primary agency for welfare of livestock and companion animals</p> <p>All hazards, all species excluding wildlife</p> <p>Coordination of animal welfare agencies</p>	<p>Primary agency for wildlife welfare</p> <p>Coordination of wildlife agencies & volunteers</p> <p>Wildlife welfare assessment</p>	<p>Care of animals at relief centres (where capacity exists)</p> <p>Stray, wandering and lost animals</p> <p>Disposal/Burial of carcasses</p>

9. Operational Arrangements

In the event of an emergency, response arrangements will be as per SEMP. Below is a general outline of the Incident Control structure in place for animal welfare emergencies.

Emergency Animal Welfare Response Structure

Although the State Biosecurity Operations Centre (SBOC) at Attwood is the preferred facility to lead large scale livestock and companion animal welfare responses, Agriculture Victoria maintains a flexible approach to suit the geographical location and nature of the incident. DELWP will lead wildlife response activities through the Incident Management Team and the State Control Centre. The structures below represent arrangements for a level 2 or 3 incident.



In response to animal welfare emergencies there a number of key operational response tasks. Arrangements in these areas below have been summarised where there is municipal level arrangements or variation.

9.1 Management of displaced and un-confined animals

Unconfined and displaced animals can pose a danger and require emergency containment or impoundment.

Council is responsible for the coordination of Emergency Relief Centres (ERC) during major emergencies. Council will assist in relocating companion animals from ERC's, provide short term accommodation where possible and advertise suitable alternative short-term accommodation options to encourage owners to plan in advance or direct owners to temporary boarding facilities. For detailed operational guidance in regard to animal management procedures at ERC please refer to the Cardinia Shire Emergency Relief Centre Guidelines.

Council may also assist with the coordination of Emergency Relief Centres for livestock animals (horses/goats) during major emergencies. Council will assist by providing short term/emergency holding at suitable locations within the Shire. Listed below are possible locations to be considered. The final decision regarding an ERC for livestock is based upon the location of the actual incident occurring. Council can not provide any transport to or from these locations. Owners are still responsible for the provision of care for their animals at these locations at any times and are encouraged to only use these locations as a place of last resort.

In the first instance, it should be communicated to animal owners that it is their responsibility to bring a food supply for their pet or animal when attending an ERC. However, this is not always practical if the evacuation process occurs quickly due to impact or imminent threat of the emergency. Council may provide basic food supplies and support items in these instances.

Table 3 - Possible Livestock ERC Locations

Site Name	Address
Bunyip Recreation Reserve	Nar Nar Goon Longwarry Road, Bunyip
Pound Road Reserve	Pound Road, Bunyip
Lang Lang Showgrounds	Westernport Road, Lang Lang
Akoonah Park Showgrounds	Princes Hwy, Berwick (Please note this location is within the City of Casey)

Animal registers can also help identify stray or wandering animals, including those presenting at ERC's. Council will work with DJPR in the identification of impacted livestock and companion animal populations.

Activation during major emergencies is via the Cardinia Shire Council MEMO.

Single incident events animals at large are to be reported via the Cardinia Shire Council Coordinator Compliance Services

9.2 Animal welfare needs assessment

DELWP will assess the needs of wildlife whilst DJPR will assess livestock and companion animal welfare support needs on private property.

Livestock and companion animal welfare assessment needs on private property will be reported to DJPR for action through the incident Control Centre (ICC).

In smaller scale incidents where these roles have not been activated, reports can be sent to DJPR who will liaise with both Council and RSPCA to ensure a coordinated and appropriate response. DJPR should be contacted via 136 186.

Wildlife welfare assessment needs will be reported to the ICC. In smaller scale incidents, reports will be sent to DELWP. DELWP should be contacted via 136 186.

9.3 Animal Disease Reporting

At the first suspicion of sickness or a disease that concerns an owner or agency representative, contact a local veterinarian, or notify Agriculture Victoria on the Emergency Animal Disease Watch Hotline on 1800 675 888

9.4 Veterinary Treatment

While the treatment of animals will ideally be organised by owners in conjunction with their private veterinarian, local practices may be overwhelmed or inaccessible in a large-scale emergency. Information and contact details for local Cardinia Shire Wildfire Carers and Veterinarians, and other animal welfare providers can be found in Appendix 1

DJPR may be able to assist through facilitation of volunteer “triage veterinarians” through the AVA or RSCPA. DJPR should be contacted via 136 186.

Where DELWP establishes a wildlife triage centre, it will lead and manage veterinary treatment for affected wildlife only. DELWP should be contacted via 136 186.

9.5 Coordination of carcass disposal

Local government is responsible for the coordination of clean-up activities including disposal of dead animals. DJPR will provide any information it has on carcass disposal needs (number and type of animals and location) to assist Council. **For biosecurity purposes, it is preferable to dispose of carcasses on the affected property.**

Activation during major emergencies is via the Cardinia Shire Council MEMO.

9.6 Emergency Fodder

In large-scale emergencies, fodder may be donated for distribution to affected animal owners. DJPR will work with the VFF in the establishment of distribution sites and draw on other groups to assist. Council where appropriate will provide fodder storage/distribution sites.

9.7 Emergency Water

In the event emergency DELWP oversees the network of emergency water supply points (EWSPs). The EWSPs provide water carting for emergency stock and domestic purposes, during severe dry seasonal conditions and surface water scarcity. There are 6 EWSP sites within the Cardinia Shire:

- Stoney Creek Road, Upper Beaconsfield
- Cnr Pakenham Road/Alexandra Road, Cockatoo
- Cnr Belgrave-Gembrook Road/Knight Road, Gembrook
- Tower Road, Koo Wee Rup
- Roseberry Street, Lang Lang
- Cnr Ryan/Princes Hwy, Pakenham

For further information go to: <https://www.water.vic.gov.au/groundwater/emergency-water-supply-points>

9.8 Donations

In large-scale emergencies, donations of money or other material aid for animals may be made. If fodder is donated, the preferred approach is to direct donations to established animal welfare organisations, eg DJPR or VFF for livestock fodder and RSPCA for companion animal donations.

Cardinia Shire Council may assist with donated fodder stock storage upon request via the Cardinia Shire Council MEMO.

9.9 Offers of volunteer assistance

In large-scale emergencies, offers of volunteer assistance may be made. The preferred approach is to direct volunteers to link in with existing organisations as appropriate.

9.10 Recording reports of animals requiring emergency welfare support

Reports received at the ICC or an ERC of animals requiring services provided by another agency/organisation will be recorded in 'Crisisworks' and referred to the relevant agency/organisation **within 24 hours of receipt.**

While the primary responsibility and duty of care always remains with the person in charge of an animal, emergency animal support services provided by a range of government and non-government agencies and organisations can assist.

9.11 Other Emergency animal welfare services

Information and contact details for local Cardinia Shire Wildfire Carers, Veterinarians, Boarding Kennels/Catteries, and other animal welfare providers can be found in Appendix 1

10. Information sharing

To ensure comprehensive assessment of animals impacted by an emergency, animal owner/carer details may need to be provided to animal welfare support agencies or organisations. This enables the delivery of urgent services to affected individuals and their animals. Council agrees to manage and share information in accordance with the principles of the Information Privacy Act 2000. Where information is disclosed, Council will record as to why the information was released and to whom.

For more information, visit the Commissioner for Privacy and Data Protection Website:

https://www.cpdp.vic.gov.au/images/content/pdf/CPDP_Information_Sheet__Emergencies_and_Privacy_V1.0.pdf

11. Process for requesting additional resources

When resources (including those owned or directly controlled through pre-existing arrangements) are unable to meet the demand for delivery of animal welfare support services, Council and other agencies may draw on resources from the surrounding municipalities/organisations as per the process outlined in the Cardinia Shire MEMP

12. Financial measures and budget

Each agency is responsible for the costs and budget for their responsibilities under the SEMP.

During major disasters, joint arrangements between the Australian Government and Victoria provide funding through the Natural Disaster Relief and Recovery Arrangements (NDRRA) to help pay for natural disaster relief and recovery costs. Based on the type of emergency, municipal Councils, agencies and departments may be eligible for reimbursement through the NDRRA.

Each agency is responsible for preparing and submitting eligible claims to the Department of Treasury and Finance refer <http://www.dtf.vic.gov.au/Victorias-Economy/Natural-disaster-financial-assistance>

Document information

Document details

Criteria	Details
Document title:	Cardinia Shire Municipal Emergency Animal Welfare Sub Plan
Document owner:	Cardinia Shire Municipal Emergency Management Planning Committee

Version control

Version	Date	Summary of amendments	Author
0.1	2/6/2022	Initial draft provided to key stakeholders for feedback	Alicia Groves – Chair Cardinia Shire Relief and Recovery Sub Committee
1.0	6/9/2022	Draft approved by Cardinia Shire MEMPC	Stewart Matulis – Chair Cardinia Shire MEMPC

Document assurance

This document requires the following assurance:

Assurer	Title	Date
Alicia Groves	Chair – on behalf of the Cardinia Shire Relief and Recovery Sub Committee	6/9/2022

Document approval

This document requires the following approval:

Approver	Title	Date
Stewart Matulis	Chair Cardinia Shire MEMPC	6/9/2022

References

Support material	Author	Location/link
Guidelines for Preparing State, Regional and Municipal Emergency Management Plans	Issued by the Minister for Police and Emergency	EMV Website
Victorian Emergency Animal Welfare Plan	Published by the Department of Jobs, Precincts and Regions	Agriculture Victoria Website https://agriculture.vic.gov.au/farm-management/emergency-management/emergency-animal-welfare/victorian-emergency-animal-welfare-plan
Resilient Recovery Strategy	Emergency Management Victoria	EMV Website https://www.emv.vic.gov.au/how-we-help/resilient-recovery-strategy

Support material	Author	Location/link
Victorian Emergency Operations Handbook	Emergency Management Victoria	EMV Website https://www.emv.vic.gov.au/publications/victorian-emergency-operations-handbook
Victorian Preparedness Framework	Emergency Management Victoria	EMV Website https://www.emv.vic.gov.au/how-we-help/emergency-management-capability-in-victoria/victorian-preparedness-framework
Environmental Scan Report: Southern Metro Region	Information Management and Intelligence Team, EMV	EMV Website https://www.emv.vic.gov.au/em-planning-resource-library/regional-level-resources/southern-metro-environmental-scan

Review date

Review Date	Description
November 2025	This document will be reviewed every 3 years or more frequently as required.

Appendix A: Animal Welfare Municipal Contact List

CONTACT INFORMATION		
Animal Identification Services		
Australian Animal Registry	1800 025 461 / (02) 9704 1450	www.aar.org.au
Central Animal Records	1800 333 202/ (02) 9706 3187	www.car.com.au
Global Micro Animal Registry	(02) 8338 9063	www.globalmicro.com.au
Home Safe	1300 537 140	www.homesafeid.com
Livestock Identification	0436 815 977 0436 812 226	Rhianna Merbach – Agriculture Victoria Nikki Chadee – Agriculture Victoria
NLIS	1800 678 779	www.nils.mla.com.au
Pet Address		www.petaddress.com.au
Pet Safe	(02) 8850 6800	www.petsafe.com.au
Animal Destruction		
Livestock and companion animal DJPR / AgVic	136 186	https://djpr.vic.gov.au/about-us/overview/responsibilities-and-functions/emergency-functions
Wildlife DELWP or Parks Victoria	136 186	https://www.wildlife.vic.gov.au/wildlife-emergencies/wildlife-emergencies
Animal Welfare Services		
Agriculture Victoria	136 186	www.agriculture.vic.gov.au/
Australian Veterinary Association	(03) 9600 2930	www.ava.com.au
Cat Protection Society of Victoria	(03) 8457 650	www.catprotection.com.au
DELWP	136 186	www.delwp.vic.gov.au
DJPR	136 186	https://djpr.vic.gov.au/

Dogs Victoria	(03) 9788 2500	www.dogsvictoria.org.au
Lort Smith Animal Hospital	(03) 9328 3021	www.lortsmith.com
Parks Victoria	131 963	www.parkweb.vic.gov.au
Project Hope Horse Welfare Aust	1300 881 606	www.phhvw.org.au
RSPCA	(02) 6282 8300	www.rspca.org.au
Wildlife Victoria	1300 094 535	www.wildlifelifevictoria.org.au
Zoos Victoria	(03) 9285 9300	www.zoo.org.au

Boarding Kennels and Catteries

Beaconhills Boarding Kennels & Cattery	Beaconsfield	(03) 9707 1661
Cats "R" Us	Officer	(03) 9707 4740
Clematis Boarding Kennels and Cattery	Clematis	(03) 5968 4875
Granite Hill Pet Resort (Kennel)	Tynong	(03) 5629 1163
Yannathan Park Boarding Kennels	Yannathan	(03) 5997 8352

Pounds

Lost Dogs Home	Cranbourne	(03) 9702 8055
----------------	------------	---

Wildlife Carers

DELWP injured Wildlife Tool		https://www.wildlife.vic.gov.au/injured-native-wildlife/wildlife-tool
The Animal Doctors	(03) 5941 3822	https://theanimaldoctors.com.au/community/strays-wildlife-rescue/
Wildlife Victoria	(03)8400 7300	https://www.wildlifelifevictoria.org.au/

Veterinary Practices

Animal Doctors	Pakenham	(03) 5941 3822
Avonsleigh Veterinary Clinic	Avonsleigh	(03) 5968 3957
Beaconsfield Vet Centre	Beaconsfield	(03) 5997 3300
Bunyip Veterinary Clinic	Bunyip	(03) 5629 5309
Casey Pet Emergency	Narre Warren	(03) 8790 1625
Cockatoo Creek Veterinarian	Cockatoo	(03) 5926 5028
Emerald Veterinary Centre	Emerald	(03) 5968 1888
Greencross Vets	Pakenham	(03) 5941 3944
Kooweerup Veterinary Clinic	Kooweerup	(03) 5997 3300
Racecourse Rd Vet Clinic	Pakenham	(03) 5941 5994

LIVESTOCK CONTACT INFORMATION

Carcass Disposal

Loch Knackery	(03) 5657 2300	
Yarra Valley Stock Removal	0418 577 941	
Veolia Hampton Park Public Drop Off	9554 4502	
EPA – Approvals	1300 372 842	

Fodder Donations

Victorian Farmers Federation	1300 882 833	https://www.vff.org.au/
------------------------------	--------------	---

Fodder Requests

Need for Feed – Lions Club	0429 995 550	www.needforfeed.org
Victorian Farmers Federation	1300 882 833	https://www.vff.org.au/

Livestock Transport		
Abrehart Transports Pty Ltd	0419 371 131	http://www.abrehart.com.au/
Allen Reeves Alternative Horse Transport	0425 812 563	https://alternativehorsetransport.com.au/
Livestock Welfare Assessment		
DJPR (Agriculture Victoria)	136 186	www.agriculture.vic.gov.au/
Water		
Water Authority Melbourne Water	131 722	https://www.melbournewater.com.au/
Cartage - Cardinia Water	0458 254 560	
M Martin Transport & Cartage	0422 905 300	
Cartage - Kraan Contracting	(03) 5942 7664	
Others		
Bunyip and District Agricultural Society	Facebook	
Game Management Authority	136 186	www.gma.vic.gov.au
Lang Lang Pastoral and Agricultural Society	Facebook	
Pakenham Racing Club	(03) 5940 6600	
Victorian Livestock Exchange	(03) 5940 2121	
West Gippsland Progress Association		https://www.westgippslandprogassoc.org.au/

Appendix B: Equestrian Venues and Clubs in Cardinia Shire

EQUESTRIAN VENUES AND CLUBS IN CARDINIA SHIRE

Equestrian venue	Location	Size	Owner	Tenure	Reserve type	Equestrian user group	Members (2012)
Hills sub-region							
Cannibal Creek Reserve	Garfield North Road, Garfield North	14.8ha	DSE	Committee of Management (DSE appointed)	Equestrian, bushland	Cannibal Creek Pony Club	30
						Mt Cannibal Adult Riding Club	30
						West Gippsland Quarter Horse Association	159
						West Gippsland Aust. Stock Horse Branch	134
Gembrook Riding Reserve	Cnr. Gembrook Road and Red Road	0.7ha	Council	Lease agreement	Equestrian	Gembrook Riding Club	27
Huxtable Road Reserve	Huxtable Road, Pakenham Upper	18.6ha	Council	Committee of Management	Equestrian	Pakenham Upper Riding Club	53
						Pakenham Pony Club	55
Josie Bysouth Reserve	Hillside Road, Cockatoo	3.8ha	Council	Committee of Management	Equestrian	Cockatoo and District Pony Club	43
						Cockatoo and District Riding Club (inactive)	7
Officer Pony Club Grounds	Brown Road	3.7ha	DSE	Lease agreement (Council the Committee of Management)	Equestrian	Officer Pony Club	16
						Officer Equestrian Club (newly formed)	0
Upper Beaconsfield Recreation Reserve	Burton Road	3.1ha	DSE	Committee of Management (DSE appointed)	Multi-use	Upper Beaconsfield Riding Club	37
						Upper Beaconsfield Pony Club	30
Yarrabubba Recreation Reserve	Yarrabubba Road, Nar Nar Goon North	2.3ha	Council	Committee of Management	Equestrian	Nar Nar Goon Riding Club	18
						Nar Nar Goon Pony Club	29
Rural (south and east) sub-region							
Catani Recreation Reserve	Taplins Road	2.1ha	DSE	Committee of Management (DSE appointed)	Multi-use	Gippsland Pleasure Harness Society	13
Koo Wee Rup Recreation	Denhams Road	1.7ha	DSE	Committee of Management	Multi-use	Koo Wee Rup Horse Riders	61

Reserve						Club	
Lang Lang Showgrounds	Westernport Road	7ha	Trust	LL Pastoral, Agricultural and Horticultural Association	Multi-use	Port Phillip Show Jumping Club	224
Pound Road Reserve	Pound Road, Bunyip	20ha	DSE	Committee of Management (Council appointed)	Equestrian	Bunyip and District Pony Club	48
						Lillico and District Pony Club	15
						Bunyip Equestrian Club	51
Total							1,080

Appendix C: Holding Yards and Hitching Options in Cardinia Shire

EQUESTRIAN VENUES WITH HOLDING YARDS / HITCHING OPTIONS	
Venue	Facilities
Cannibal Creek Reserve	Bushland area Open space area

14.8 ha	Clubroom Shed x 2, Canteen, toilet block, shelter Storage shed Holding yards x 20 Large/cattle yards x 6 Car parking, along access road
Gembrook Riding Reserve 0.7 ha	Clubroom shed Storage shed Car park, shared with Comm. Centre Holding yards x 16
Huxtable Road Riding Reserve 18.6 ha	Cross country course (PCV Grade 1/EA pre-novice) Clubrooms, storage sheds Holding yards x 42 Car parking
Josie Bysouth Reserve 3.8 ha	Cross country course and open space Clubrooms and toilets Holding yards Car parking
Officer Pony Club Grounds 6.7 ha	Open space Clubroom shed, port-a-loos x 2 Storage shed Holding yards x 22 Car park, gravel Facilities are located with a power-line easement.
Upper Beaconsfield Recreation Reserve 3.1 ha	Bushland Clubrooms Holding yards x 12 Car parking
Yarrabubba Horse Riding Reserve 2.3 ha	Clubrooms and toilet block Holding yards x 30 Car parking (clay surface)
Catani Recreation Reserve 2.1ha	Grass arena (100m x 40m) Disused pony club arena Clubrooms (shared/reserve) Storage shed Holding yards Car parking (shared/reserve)
Koo Weer Rup Recreation Reserve 1.7ha	Open space/cross country area Clubroom Shed Holding yards x 20 Car parking – grass
Lang Lang Showgrounds 7ha	Storage sheds x 2, public toilet block Hitching rails Car park, gravel
Pound Road Reserve, Bunyip 20ha	Large open space area Bushland area Clubrooms and toilet block Storage sheds/containers Holding yards x 27 Car parking x 3 (grassed areas)

