

# APPENDIX C3 – BUNYIP RIVER & BUNYIP MAIN OUTFALL DRAIN FLOOD EMERGENCY PLAN

## Overview of Flooding Consequences

*This Summary table is generated from Victorian Government data. The State of Victoria does not guarantee that the publication is without flaw of any kind or is wholly appropriate for your particular purposes and therefore disclaims all liability for error, loss or damage which may arise from reliance upon it. All persons access this information should make appropriate enquiries to assess the currency of the data.*

### Summary of Consequences in a 1% AEP (100yr ARI) flood within the Bunyip River catchment

Property					
<b>Properties</b>	<b>672</b>				
Residential	174	Predominantly in Koo Wee Rup			
Commercial	0				
Industrial	0				
Public Land	2				
Rural	496				
Community Infrastructure					
Health Facilities	1	Koo Wee Rup Hospital (Isolation)			
Care Facilities	1	Westernport Nursing Home (Isolation)			
Community Venues	1	Cora Lynn Public Hall			
Places of Worship	2	St Joseph's Catholic Church; Little Road Chapel			
Schools / Colleges	1	St John the Baptist Primary School			
Essential Infrastructure					
Major Roads	6	Ballarto Road; Koo Wee Rup – Long Warry Road; Koo Wee Rup Bypass; Rossiter Road; South Gippsland Hwy; Sybella Avenue			
Bus Routes	1	896			
Police Stations	1	Koo Wee Rup (Isolation)			
Comms Services	1	Bayles Exchange (Isolation)			
Emergency Services	1	Koo Wee Rup CFA (Isolation)			
Sewerage Facilities	1	Pumping Stations			
Levees	19	Levees			
Tourism / Recreation					
Recreation Facilities	1	Cora Lynn Reserve			
Government Boundaries					
Local Gov't Areas	1	Cardinia	CMA	1	Port Phillip & Westernport
Adjacent LGAs	1	Baw Baw	CFA District	1	District 08
SES Unit Area	1	Pakenham	MFB District	0	

Table C3.1 – Consequence Summary of 1% AEP flood within the Bunyip River catchment

Koo Wee Rup, Cora Lynn, Iona & Bayles are located approximately 60km southeast of Melbourne in a predominantly rural town setting. The Bunyip River is the prominent watercourse in the area, flowing from the northeast. Due to the flat terrain that dominates this part of Cardinia Shire; many open channel drainage systems have been installed to help move water out into the Western Port Bay. High Intensity, short duration rainfall events can cause flash flooding in and around Koo Wee Rup, Cora Lynn, Iona & Bayles, while prolonged rainfall may see the Bunyip River and surrounding open water channels

flood. The area sees slow water movement due to the flat terrain in the area. Flooding as a result may last for a number of days or weeks. See mapping in **Appendix F** for more insight into flooding in the area.

## Gauges and Warnings

Warnings are available for flooding expected along the Bunyip River at Iona & Cora Lynn Ford. Flood class levels for the Iona and Cora Lynn Ford gauges are detailed in table C3.2 and are used in the issuing of a flood warning for the Bunyip River Catchment. Other level / flood gauges within the Cardinia Creek catchment are contained within table C3.3.

Flood Warning Gauge	River / Creek Flood Class Level		
	Minor	Moderate	Major
Bunyip River at Iona	2.1m	5.0m	6.0m
Bunyip River at Cora Lynn Ford	3.1m	4.1m	4.5m

Table C3.2 – Gauges with established Flood Class Levels for the Bunyip River catchment

At these sites, the Bureau of Meteorology (the Bureau) in consultation with Melbourne Water will issue flood warnings if levels reach those classified above. This warning will be placed on the Bureau's website (<http://www.bom.gov.au/vic/warnings/index.shtml>). While Cardinia Shire Council monitors these warnings in times of high rainfall, there are no specific guidelines to advise how these situations should be responded to.

Gauge	Station No.	Location	Owner	Gauge Type	Mapping Ref
Bunyip River at Headworks	228207A	Along the Aqueduct Track in Gentle Annie. Eastern side of the River	Melbourne Water	Stream Level & Rain	VicMap Central 6699 K6
Bunyip River at Tonimbuk	228212	Western bank of the River off Jolley Road, Tonimbuk	Melbourne Water	Stream Level & Rain	VicMap Central 6700 B14
Bunyip River d/s Cannibal Creek, Longwarry North	228255A	Western bank of the river 700m down an unnamed road off Morrison Road, Longwarry North	Melbourne Water	Stream Level & Rain	VicMap Central 6766 A6
Bunyip River at Iona	228213A	North side of the drain at Fourteen Mile Road, Iona	Melbourne Water	Stream Level & Rain	VicMap Central 6765 E11
Bunyip River at Cora Lynn Ford	228380A	Southeast corner of the Bunyip Main and No. 4 Yallock Drains Junction on Main Drain Rd South, Cora Lynn	Melbourne Water	Stream Level	VicMap Central 6764 J13
Bunyip River at Koo Wee Rup	228395A	Along Bunyip Main Drain at Disused Railway Bridge 100m South of Station St, Koo Wee Rup	Melbourne Water	Stream Level & Rain	VicMap Central 6822 G4
Yallock Outfall at Murray Rd, Cora Lynn	228225A	West Bank of No.4 Yallock Drain at Murray Rd Bridge, Cora Lynn	Melbourne Water	Stream Level	VicMap Central 6764 G15
Nayook	228804A	End of McIntyre Rd, Nayook	Melbourne Water	Rain	VicMap Central 6701 F4
Tarago River East Branch at Neerim	228238A	East bank of the river, 200m north of Elton Rd, Neerim	Melbourne Water	Stream Level & Rain	VicMap Central 6701 G7
Tarago River at Neerim	228206B	East bank of the river at Elton Rd, Neerim	Melbourne Water	Stream Level	VicMap Central 6701 G8
Tarago Reservoir	586198	East side of Tarago Reservoir Rd, Neerim South	Melbourne Water	Rain	VicMap Central

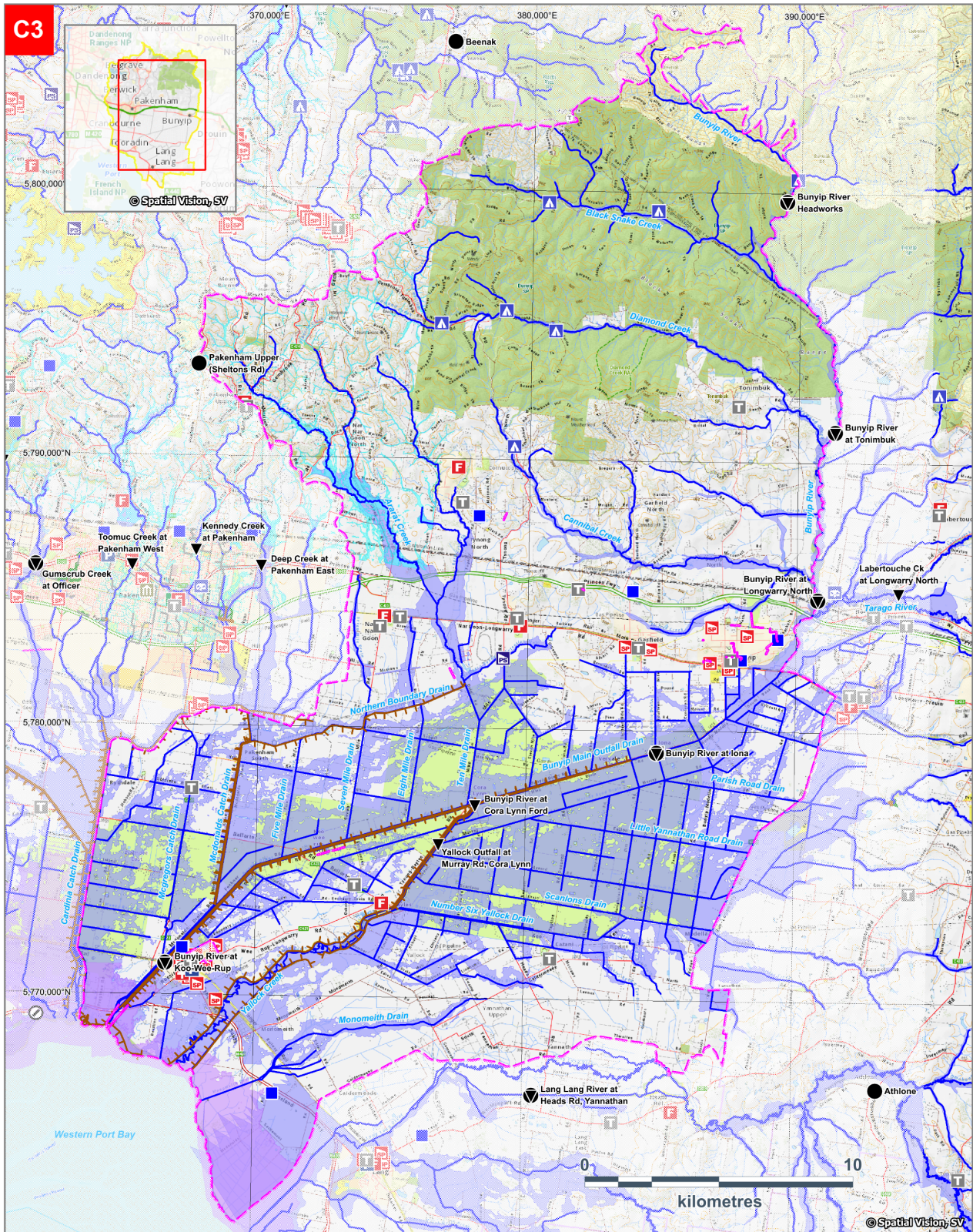
Gauge	Station No.	Location	Owner	Gauge Type	Mapping Ref
					6701 H14
Tarago River at Neerim South	228219C	East bank of the river at Jindivick – Neerim South Rd, Neerim South	Melbourne Water	Stream Level	VicMap Central 6701 G15
Tarago River at Drouin West	228201B	North bank of the river 80m west of Fisher Rd, Drouin West	Melbourne Water	Stream Level & Rain	VicMap Central 6766 H7

Table C3.3 – Gauges within the Bunyip River catchment in Cardinia Shire

The gauges in table C3.3 may provide some warning of expected flooding. See the Melbourne Water website for more information on these gauges: <http://www.melbournewater.com.au/waterdata/rainfallandriverleveldata/Pages/Rainfall-and-river-level-new.aspx>. The Bureau of Meteorology’s website also links a number of these gauges at: [http://www.bom.gov.au/cgi-bin/wrap\\_fwo.pl?IDV60201.html](http://www.bom.gov.au/cgi-bin/wrap_fwo.pl?IDV60201.html). It is advised that residents monitor the Bureau of Meteorology’s website <http://www.bom.gov.au/vic/warnings/index.shtml?ref=hdr> and the VicEmergency website <https://emergency.vic.gov.au/> for any thunderstorm, flood or severe weather warnings present for their area.



# Area Map of Flood Risk within the Bunyip River catchment



Map Produced by VICSES January 2022.

**CARDINIA SHIRE**  
 1% AEP (100yr ARI) Flooding  
**C3. Area of flood risk within the Bunyip River catchment**

- |                                 |                                   |                        |   |
|---------------------------------|-----------------------------------|------------------------|---|
| Building                        | Melbourne Water Underground Drain | Fire Station           | <b>LAND USE</b>                           |
| Waterbody                       | Levee                             | Airport / Airfield     |   |
| 1% AEP Riverine Flood Extent    | Rain Gauge                        | Retail Water Storage   | Residential                               |
| 1% AEP Flash Flood Extent       | Stream Level Gauge                | Hospital               | Commercial and Business                   |
| 1% AEP Storm Surge Extent       | Police Station                    | Ambulance Station      | Industrial                                |
| Melbourne Water Retarding Basin | Telephone Exchange                | Sewer Pumping Station  | Public Parks / Cemeteries / Recreation    |
| Waterway                        | State Emergency Service           | Power Terminal Station | Utilities and Local Government Facilities |
| Camp Ground / Group Camp        | Drainage Pumping Station          | Municipal Offices      | Education                                 |
| Caravan Park                    |                                   |                        | Boundary for Appendix C2                  |

**VICTORIA** **Melbourne Water**  
 This map publication is presented by the Victoria State Emergency Service for the purpose of disseminating emergency management information. The contents of the information have not been independently verified by the Victoria State Emergency Service. No liability is accepted for any damage, loss or injury caused by errors or omissions in this information or for any action taken by any person in reliance upon it.

Figure C3 – Areas of flood risk around the Bunyip River and Bunyip Main Outfall Drain in Cardinia Shire



## Properties at Flood Risk

No data at this stage is available in regards to risk from above-floor inundation in the Koo Wee Rup, Cora Lynn, Iona & Bayles region. Properties listed in the table below are at risk from property flooding. As more intelligence becomes available, this list may change. This table has been populated based on modelling work as part of the Koo Wee Rup Flood Study (Cardno, November 2014) flood mapping and risk assessment program.

*This Property Flood Risk Table is presented by the Victoria State Emergency Service for the purpose of disseminating emergency management information. The contents of the information have not been independently verified by the Victoria State Emergency Service. No liability is accepted for any damage, loss or injury caused by errors or omissions in this information or for any action taken by any person in reliance upon it.*

Properties at risk from Flooding in the Bunyip River catchment during a 1% AEP event				
Residential	Commercial	Industrial	Rural	Public Use
Street No. at Risk	Street	Suburb	Along Melbourne Water Watercourse	Flood Risk Type
286	Abeckett Road	Bunyip	Bunyip River	Riverine
3/7	Alexandra Avenue	Koo Wee Rup	Koo-Wee-Rup South Drain	Riverine
8	Alexandra Avenue	Koo Wee Rup	Koo-Wee-Rup South Drain	Riverine
10	Alexandra Avenue	Koo Wee Rup	Koo-Wee-Rup South Drain	Riverine
12	Alexandra Avenue	Koo Wee Rup	Koo-Wee-Rup South Drain	Riverine
34	Anderson Road	Bunyip	Bunyip Main Outfall Drain	Riverine
50	Backhouses Road	Bayles	South Boundary Drain	Riverine
2805	Ballarto Road	Pakenham South	McGregors Catchment Drain	Riverine
2855	Ballarto Road	Pakenham South	McGregors Catchment Drain	Riverine
2885	Ballarto Road	Pakenham South	McGregors Catchment Drain	Riverine
2895	Ballarto Road	Pakenham South	McGregors Catchment Drain	Riverine
3130	Ballarto Road	Koo Wee Rup	McDondalds Catchment Drain	Riverine
3155	Ballarto Road	Pakenham South	McDondalds Catchment Drain	Riverine
3165	Ballarto Road	Pakenham South	McDondalds Catchment Drain	Riverine
3170	Ballarto Road	Koo Wee Rup	McDondalds Catchment Drain	Riverine
3215	Ballarto Road	Pakenham South	McDondalds Catchment Drain	Riverine
3245	Ballarto Road	Pakenham South	Five Mile Drain	Riverine
3295	Ballarto Road	Pakenham South	Five Mile Drain	Riverine
3370	Ballarto Road	Koo Wee Rup North	Bunyip Main Outfall Drain	Riverine
3500	Ballarto Road	Bayles	South Boundary Drain	Riverine
3515	Ballarto Road	Bayles	South Boundary Drain	Riverine
3520	Ballarto Road	Bayles	South Boundary Drain	Riverine
3530	Ballarto Road	Bayles	South Boundary Drain	Riverine
3540	Ballarto Road	Bayles	South Boundary Drain	Riverine
3545	Ballarto Road	Bayles	South Boundary Drain	Riverine
3555	Ballarto Road	Bayles	South Boundary Drain	Riverine
3560	Ballarto Road	Bayles	South Boundary Drain	Riverine
3575	Ballarto Road	Bayles	South Boundary Drain	Riverine
3585	Ballarto Road	Bayles	South Boundary Drain	Riverine
3675	Ballarto Road	Bayles	South Boundary Drain	Riverine
25	Bastin Road	Bunyip	Bunyip Main Outfall Drain	Riverine
2	Bellairs Place	Koo Wee Rup	Koo-Wee-Rup South Drain	Riverine
4	Bellairs Place	Koo Wee Rup	Koo-Wee-Rup South Drain	Riverine

Properties at risk from Flooding in the Bunyip River catchment during a 1% AEP event

Residential	Commercial	Industrial	Rural	Public Use
Street No. at Risk	Street	Suburb	Along Melbourne Water Watercourse	Flood Risk Type
6	Bellairs Place	Koo Wee Rup	Koo-Wee-Rup South Drain	Riverine
8	Bellairs Place	Koo Wee Rup	Koo-Wee-Rup South Drain	Riverine
10	Bellairs Place	Koo Wee Rup	Koo-Wee-Rup South Drain	Riverine
310	Bennett Road	Cora Lynn	Murray Road Drain	Riverine
315	Bennett Road	Cora Lynn	Murray Road Drain	Riverine
340	Bennett Road	Cora Lynn	Murray Road Drain	Riverine
415	Bennett Road	Cora Lynn	Murray Road Drain	Riverine
95	Berry Lane	Bunyip	Bunyip Main Outfall Drain	Riverine
120	Berry Lane	Bunyip	Bunyip Main Outfall Drain	Riverine
125	Berry Lane	Bunyip	Bunyip Main Outfall Drain	Riverine
90	Bethunes Road	Koo Wee Rup	South Boundary Drain	Riverine
7	Blackfish Drive	Koo Wee Rup	South Boundary Drain	Riverine
54	Bladens Road	Koo Wee Rup	South Boundary Drain	Riverine
60	Bladens Road	Koo Wee Rup	South Boundary Drain	Riverine
95	Bladens Road	Koo Wee Rup	South Boundary Drain	Riverine
115	Bladens Road	Koo Wee Rup	South Boundary Drain	Riverine
125	Bladens Road	Koo Wee Rup	South Boundary Drain	Riverine
1	Boormani Court	Koo Wee Rup	South Boundary Drain	Riverine
4	Boormani Court	Koo Wee Rup	South Boundary Drain	Riverine
5	Boormani Court	Koo Wee Rup	South Boundary Drain	Riverine
6	Boormani Court	Koo Wee Rup	South Boundary Drain	Riverine
7	Boormani Court	Koo Wee Rup	South Boundary Drain	Riverine
1	Boundary Drain Road	Koo Wee Rup	Bunyip Main Outfall Drain	Riverine
3	Boundary Drain Road	Koo Wee Rup	Bunyip Main Outfall Drain	Riverine
5	Boundary Drain Road	Koo Wee Rup	Bunyip Main Outfall Drain	Riverine
7-9	Boundary Drain Road	Koo Wee Rup	Bunyip Main Outfall Drain	Riverine
19	Boundary Drain Road	Koo Wee Rup	Bunyip Main Outfall Drain	Riverine
23	Boundary Drain Road	Koo Wee Rup	Bunyip Main Outfall Drain	Riverine
25	Boundary Drain Road	Koo Wee Rup	Bunyip Main Outfall Drain	Riverine
27	Boundary Drain Road	Koo Wee Rup	Bunyip Main Outfall Drain	Riverine
29	Boundary Drain Road	Koo Wee Rup	Bunyip Main Outfall Drain	Riverine
31	Boundary Drain Road	Koo Wee Rup	Bunyip Main Outfall Drain	Riverine
33	Boundary Drain Road	Koo Wee Rup	Bunyip Main Outfall Drain	Riverine
35	Boundary Drain Road	Koo Wee Rup	Bunyip Main Outfall Drain	Riverine
37	Boundary Drain Road	Koo Wee Rup	Bunyip Main Outfall Drain	Riverine
39	Boundary Drain Road	Koo Wee Rup	Bunyip Main Outfall Drain	Riverine
41	Boundary Drain Road	Koo Wee Rup	Bunyip Main Outfall Drain	Riverine
43	Boundary Drain Road	Koo Wee Rup	Bunyip Main Outfall Drain	Riverine
51	Boundary Drain Road	Koo Wee Rup	Bunyip Main Outfall Drain	Riverine
75	Boundary Drain Road	Koo Wee Rup	Bunyip Main Outfall Drain	Riverine
85	Boundary Drain Road	Koo Wee Rup	Bunyip Main Outfall Drain	Riverine
95	Boundary Drain Road	Koo Wee Rup	Bunyip Main Outfall Drain	Riverine
105	Boundary Drain Road	Koo Wee Rup	Bunyip Main Outfall Drain	Riverine
109	Boundary Drain Road	Koo Wee Rup	Bunyip Main Outfall Drain	Riverine
111	Boundary Drain Road	Koo Wee Rup	Bunyip Main Outfall Drain	Riverine

**Properties at risk from Flooding in the Bunyip River catchment during a 1% AEP event**

Properties at risk from Flooding in the Bunyip River catchment during a 1% AEP event				
Residential	Commercial	Industrial	Rural	Public Use
Street No. at Risk	Street	Suburb	Along Melbourne Water Watercourse	Flood Risk Type
115	Boundary Drain Road	Koo Wee Rup	Bunyip Main Outfall Drain	Riverine
125	Boundary Drain Road	Koo Wee Rup	Bunyip Main Outfall Drain	Riverine
129	Boundary Drain Road	Koo Wee Rup	Bunyip Main Outfall Drain	Riverine
135	Boundary Drain Road	Koo Wee Rup	Bunyip Main Outfall Drain	Riverine
405	Boundary Drain Road	Koo Wee Rup	South Boundary Drain	Riverine
575	Boundary Drain Road	Bayles	South Boundary Drain	Riverine
595	Boundary Drain Road	Bayles	South Boundary Drain	Riverine
705	Boundary Drain Road	Bayles	South Boundary Drain	Riverine
745	Boundary Drain Road	Bayles	South Boundary Drain	Riverine
35	Boxshall Road	Bayles	Yallock Creek	Riverine
55	Boxshall Road	Bayles	Yallock Creek	Riverine
15	Bunyip River Road	Nar Nar Goon	Bunyip Main Outfall Drain	Riverine
55	Bunyip River Road	Nar Nar Goon	Bunyip Main Outfall Drain	Riverine
91	Bunyip River Road	Nar Nar Goon	Bunyip Main Outfall Drain	Riverine
95	Bunyip River Road	Nar Nar Goon	Bunyip Main Outfall Drain	Riverine
165	Bunyip River Road	Nar Nar Goon	Bunyip Main Outfall Drain	Riverine
315	Bunyip River Road	Cora Lynn	Bunyip Main Outfall Drain	Riverine
455	Bunyip River Road	Cora Lynn	Bunyip Main Outfall Drain	Riverine
465	Bunyip River Road	Cora Lynn	Bunyip Main Outfall Drain	Riverine
525	Bunyip River Road	Cora Lynn	Bunyip Main Outfall Drain	Riverine
595	Bunyip River Road	Cora Lynn	Bunyip Main Outfall Drain	Riverine
605	Bunyip River Road	Cora Lynn	Bunyip Main Outfall Drain	Riverine
625	Bunyip River Road	Cora Lynn	Bunyip Main Outfall Drain	Riverine
635	Bunyip River Road	Cora Lynn	Bunyip Main Outfall Drain	Riverine
815-835	Bunyip River Road	Vervale	Bunyip Main Outfall Drain	Riverine
895	Bunyip River Road	Vervale	Bunyip Main Outfall Drain	Riverine
955	Bunyip River Road	Vervale	Bunyip Main Outfall Drain	Riverine
995	Bunyip River Road	Vervale	Bunyip Main Outfall Drain	Riverine
1175	Bunyip River Road	Garfield	Bunyip Main Outfall Drain	Riverine
1215	Bunyip River Road	Iona	Bunyip Main Outfall Drain	Riverine
1255	Bunyip River Road	Iona	Bunyip Main Outfall Drain	Riverine
1275	Bunyip River Road	Iona	Bunyip Main Outfall Drain	Riverine
1285	Bunyip River Road	Iona	Bunyip Main Outfall Drain	Riverine
1325	Bunyip River Road	Iona	Bunyip Main Outfall Drain	Riverine
1365	Bunyip River Road	Iona	Bunyip Main Outfall Drain	Riverine
1375	Bunyip River Road	Iona	Bunyip Main Outfall Drain	Riverine
1395	Bunyip River Road	Bunyip	Bunyip Main Outfall Drain	Riverine
23	Bunyip-Modella Road	Bunyip	Bunyip Main Outfall Drain	Riverine
25	Bunyip-Modella Road	Bunyip	Bunyip Main Outfall Drain	Riverine
29	Bunyip-Modella Road	Bunyip	Bunyip Main Outfall Drain	Riverine
31	Bunyip-Modella Road	Bunyip	Bunyip Main Outfall Drain	Riverine
225	Bunyip-Modella Road	Bunyip	Bunyip Main Outfall Drain	Riverine
255	Bunyip-Modella Road	Bunyip	Bunyip Main Outfall Drain	Riverine
275	Bunyip-Modella Road	Bunyip	Bunyip Main Outfall Drain	Riverine
325	Bunyip-Modella Road	Bunyip	Bunyip Main Outfall Drain	Riverine



Properties at risk from Flooding in the Bunyip River catchment during a 1% AEP event

Residential	Commercial	Industrial	Rural	Public Use
Street No. at Risk	Street	Suburb	Along Melbourne Water Watercourse	Flood Risk Type
350	Bunyip-Modella Road	Iona	Bunyip Main Outfall Drain	Riverine
400	Bunyip-Modella Road	Iona	Murray Road Drain	Riverine
415	Bunyip-Modella Road	Bunyip	Murray Road Drain	Riverine
420	Bunyip-Modella Road	Iona	Murray Road Drain	Riverine
450	Bunyip-Modella Road	Iona	Murray Road Drain	Riverine
455	Bunyip-Modella Road	Iona	Murray Road Drain	Riverine
465	Bunyip-Modella Road	Iona	Murray Road Drain	Riverine
485	Bunyip-Modella Road	Iona	Murray Road Drain	Riverine
490	Bunyip-Modella Road	Iona	Murray Road Drain	Riverine
710	Bunyip-Modella Road	Iona	Little Yannathan Road Drain	Riverine
730	Bunyip-Modella Road	Iona	Little Yannathan Road Drain	Riverine
735	Bunyip-Modella Road	Iona	Little Yannathan Road Drain	Riverine
850	Bunyip-Modella Road	Iona	Number Seven Yallock Drain	Riverine
66	Carses Road	Iona	Number Seven Yallock Drain	Riverine
95	Carses Road	Iona	Number Seven Yallock Drain	Riverine
17	Catani Avenue	Koo Wee Rup	Koo-Wee-Rup South Drain	Riverine
19	Catani Avenue	Koo Wee Rup	Koo-Wee-Rup South Drain	Riverine
20	Catani Avenue	Koo Wee Rup	Koo-Wee-Rup South Drain	Riverine
21	Catani Avenue	Koo Wee Rup	Koo-Wee-Rup South Drain	Riverine
22	Catani Avenue	Koo Wee Rup	Koo-Wee-Rup South Drain	Riverine
23	Catani Avenue	Koo Wee Rup	Koo-Wee-Rup South Drain	Riverine
24	Catani Avenue	Koo Wee Rup	Koo-Wee-Rup South Drain	Riverine
25	Catani Avenue	Koo Wee Rup	Koo-Wee-Rup South Drain	Riverine
26	Catani Avenue	Koo Wee Rup	Koo-Wee-Rup South Drain	Riverine
27	Catani Avenue	Koo Wee Rup	Koo-Wee-Rup South Drain	Riverine
29	Catani Avenue	Koo Wee Rup	Koo-Wee-Rup South Drain	Riverine
31	Catani Avenue	Koo Wee Rup	Koo-Wee-Rup South Drain	Riverine
33	Catani Avenue	Koo Wee Rup	Koo-Wee-Rup South Drain	Riverine
33A	Catani Avenue	Koo Wee Rup	Koo-Wee-Rup South Drain	Riverine
35	Catani Avenue	Koo Wee Rup	Koo-Wee-Rup South Drain	Riverine
43	Catani Avenue	Koo Wee Rup	Koo-Wee-Rup South Drain	Riverine
45	Catani Avenue	Koo Wee Rup	Koo-Wee-Rup South Drain	Riverine
47	Catani Avenue	Koo Wee Rup	Koo-Wee-Rup South Drain	Riverine
49	Catani Avenue	Koo Wee Rup	Koo-Wee-Rup South Drain	Riverine
51	Catani Avenue	Koo Wee Rup	Koo-Wee-Rup South Drain	Riverine
25	Convent School Road	Nar Nar Goon	Northern Boundary Drain	Riverine
45	Convent School Road	Nar Nar Goon	Northern Boundary Drain	Riverine
95	Convent School Road	Nar Nar Goon	Northern Boundary Drain	Riverine
125	Convent School Road	Nar Nar Goon	Northern Boundary Drain	Riverine
145	Convent School Road	Nar Nar Goon	Northern Boundary Drain	Riverine
200	Convent School Road	Nar Nar Goon	Eight Mile Drain	Riverine
65	Daleys Road	Koo Wee Rup	Bunyip Main Outfall Drain	Riverine
90	Daleys Road	Koo Wee Rup	South Boundary Drain	Riverine
105	Daleys Road	Koo Wee Rup	South Boundary Drain	Riverine
115	Daleys Road	Koo Wee Rup	South Boundary Drain	Riverine

Properties at risk from Flooding in the Bunyip River catchment during a 1% AEP event

Residential	Commercial	Industrial	Rural	Public Use
Street No. at Risk	Street	Suburb	Along Melbourne Water Watercourse	Flood Risk Type
135	Daleys Road	Koo Wee Rup	South Boundary Drain	Riverine
25	Daly Road	Nar Nar Goon	Ten Mile Drain	Riverine
60	Denhams Road	Koo Wee Rup	South Boundary Drain	Riverine
63	Denhams Road	Koo Wee Rup	South Boundary Drain	Riverine
65	Denhams Road	Koo Wee Rup	South Boundary Drain	Riverine
425	Dessent Road	Cora Lynn	Number Seven Yallock Drain	Riverine
460	Dessent Road	Iona	Number Seven Yallock Drain	Riverine
46	Diamond Drive	Koo Wee Rup	South Boundary Drain	Riverine
48	Diamond Drive	Koo Wee Rup	South Boundary Drain	Riverine
59	Diamond Drive	Koo Wee Rup	South Boundary Drain	Riverine
61	Diamond Drive	Koo Wee Rup	South Boundary Drain	Riverine
63	Diamond Drive	Koo Wee Rup	South Boundary Drain	Riverine
65	Diamond Drive	Koo Wee Rup	South Boundary Drain	Riverine
71	Diamond Drive	Koo Wee Rup	South Boundary Drain	Riverine
60	Dineen Road	Bayles	Yallock Creek	Riverine
80	Dineen Road	Bayles	Yallock Creek	Riverine
160	Dineen Road	Bayles	Yallock Creek	Riverine
170	Dineen Road	Bayles	Yallock Creek	Riverine
200	Dineen Road	Bayles	Yallock Creek	Riverine
230	Dineen Road	Bayles	Yallock Creek	Riverine
5	Dragonfly Circuit	Koo Wee Rup	Koo-Wee-Rup South Drain	Riverine
6	Dragonfly Circuit	Koo Wee Rup	Koo-Wee-Rup South Drain	Riverine
7	Dragonfly Circuit	Koo Wee Rup	Koo-Wee-Rup South Drain	Riverine
8	Dragonfly Circuit	Koo Wee Rup	Koo-Wee-Rup South Drain	Riverine
9	Dragonfly Circuit	Koo Wee Rup	Koo-Wee-Rup South Drain	Riverine
10	Dragonfly Circuit	Koo Wee Rup	Koo-Wee-Rup South Drain	Riverine
11	Dragonfly Circuit	Koo Wee Rup	Koo-Wee-Rup South Drain	Riverine
13	Dragonfly Circuit	Koo Wee Rup	Koo-Wee-Rup South Drain	Riverine
19	Dragonfly Circuit	Koo Wee Rup	Koo-Wee-Rup South Drain	Riverine
21	Dragonfly Circuit	Koo Wee Rup	Koo-Wee-Rup South Drain	Riverine
23	Dragonfly Circuit	Koo Wee Rup	Koo-Wee-Rup South Drain	Riverine
25	Dragonfly Circuit	Koo Wee Rup	Koo-Wee-Rup South Drain	Riverine
27	Dragonfly Circuit	Koo Wee Rup	Koo-Wee-Rup South Drain	Riverine
29	Dragonfly Circuit	Koo Wee Rup	Koo-Wee-Rup South Drain	Riverine
31	Dragonfly Circuit	Koo Wee Rup	Koo-Wee-Rup South Drain	Riverine
8	Drake Court	Bunyip	Bunyip River	Riverine
110	Eight Mile Road	Nar Nar Goon	Eight Mile Drain	Riverine
195	Eight Mile Road	Nar Nar Goon	Eight Mile Drain	Riverine
215	Eight Mile Road	Nar Nar Goon	Eight Mile Drain	Riverine
230	Eight Mile Road	Nar Nar Goon	Eight Mile Drain	Riverine
235	Eight Mile Road	Nar Nar Goon	Eight Mile Drain	Riverine
290	Eight Mile Road	Nar Nar Goon	Eight Mile Drain	Riverine
350	Eight Mile Road	Nar Nar Goon	Eight Mile Drain	Riverine
370	Eight Mile Road	Nar Nar Goon	Eight Mile Drain	Riverine
375	Eight Mile Road	Nar Nar Goon	Northern Boundary Drain	Riverine

Properties at risk from Flooding in the Bunyip River catchment during a 1% AEP event

Properties at risk from Flooding in the Bunyip River catchment during a 1% AEP event				
Residential	Commercial	Industrial	Rural	Public Use
Street No. at Risk	Street	Suburb	Along Melbourne Water Watercourse	Flood Risk Type
365	Eleven Mile Road	Cora Lynn	Bunyip Main Outfall Drain	Riverine
494	Eleven Mile Road	Cora Lynn	Murray Road Drain	Riverine
514	Eleven Mile Road	Cora Lynn	Murray Road Drain	Riverine
7	Emerald Crescent	Koo Wee Rup	South Boundary Drain	Riverine
8	Emerald Crescent	Koo Wee Rup	South Boundary Drain	Riverine
9	Emerald Crescent	Koo Wee Rup	South Boundary Drain	Riverine
10	Emerald Crescent	Koo Wee Rup	South Boundary Drain	Riverine
11	Emerald Crescent	Koo Wee Rup	South Boundary Drain	Riverine
12	Emerald Crescent	Koo Wee Rup	South Boundary Drain	Riverine
13	Emerald Crescent	Koo Wee Rup	South Boundary Drain	Riverine
15	Emerald Crescent	Koo Wee Rup	South Boundary Drain	Riverine
17	Emerald Crescent	Koo Wee Rup	South Boundary Drain	Riverine
19	Emerald Crescent	Koo Wee Rup	South Boundary Drain	Riverine
21	Emerald Crescent	Koo Wee Rup	South Boundary Drain	Riverine
23	Emerald Crescent	Koo Wee Rup	South Boundary Drain	Riverine
25	Emerald Crescent	Koo Wee Rup	South Boundary Drain	Riverine
27	Emerald Crescent	Koo Wee Rup	South Boundary Drain	Riverine
30	Evans Road	Bunyip	Bunyip Main Outfall Drain	Riverine
185	Fallon Road	Iona	Little Yannathan Road Drain	Riverine
65	Fechner Road	Koo Wee Rup	Bunyip Main Outfall Drain	Riverine
75	Fechner Road	Koo Wee Rup	Bunyip Main Outfall Drain	Riverine
175	Fechner Road	Koo Wee Rup	Bunyip Main Outfall Drain	Riverine
200	Fechner Road	Koo Wee Rup	Bunyip Main Outfall Drain	Riverine
270	Fechner Road	Koo Wee Rup	Bunyip Main Outfall Drain	Riverine
330	Fechner Road	Koo Wee Rup North	Bunyip Main Outfall Drain	Riverine
31	Fincks Road	Bayles	Yallock Creek	Riverine
50	Fincks Road	Bayles	Yallock Creek	Riverine
60	Fincks Road	Bayles	Yallock Creek	Riverine
65	Fincks Road	Bayles	Yallock Creek	Riverine
70	Fincks Road	Bayles	Yallock Creek	Riverine
80	Fincks Road	Bayles	Yallock Creek	Riverine
90	Fincks Road	Bayles	Yallock Creek	Riverine
110	Fincks Road	Bayles	Yallock Creek	Riverine
135	Fincks Road	Bayles	Yallock Creek	Riverine
170	Fincks Road	Bayles	Yallock Creek	Riverine
85	Five Mile Road	Pakenham South	Five Mile Drain	Riverine
140	Five Mile Road	Koo Wee Rup North	Five Mile Drain	Riverine
205	Five Mile Road	Pakenham South	Five Mile Drain	Riverine
209	Five Mile Road	Pakenham South	Five Mile Drain	Riverine
270	Five Mile Road	Koo Wee Rup North	Five Mile Drain	Riverine
275	Five Mile Road	Pakenham South	Five Mile Drain	Riverine
305	Five Mile Road	Pakenham South	Five Mile Drain	Riverine
310	Five Mile Road	Koo Wee Rup North	Five Mile Drain	Riverine
345	Fourteen Mile Road	Garfield	Bunyip Main Outfall Drain	Riverine
375	Fourteen Mile Road	Garfield	Bunyip Main Outfall Drain	Riverine



Properties at risk from Flooding in the Bunyip River catchment during a 1% AEP event

Properties at risk from Flooding in the Bunyip River catchment during a 1% AEP event				
Residential	Commercial	Industrial	Rural	Public Use
Street No. at Risk	Street	Suburb	Along Melbourne Water Watercourse	Flood Risk Type
7	Fox Road	Koo Wee Rup	South Boundary Drain	Riverine
9	Fox Road	Koo Wee Rup	South Boundary Drain	Riverine
115	Gleeson Road	Tynong	Ten Mile Drain	Riverine
75	Gunn Road	Garfield	Bunyip Main Outfall Drain	Riverine
35	Hall Road	Pakenham South	McGregors Catchment Drain	Riverine
365	Hall Road	Pakenham South	Five Mile Drain	Riverine
4/495	Hall Road	Pakenham South	Five Mile Drain	Riverine
503	Hall Road	Nar Nar Goon	Seven Mile Drain	Riverine
43A	Henry Street	Koo Wee Rup	South Boundary Drain	Riverine
44	Henry Street	Koo Wee Rup	South Boundary Drain	Riverine
45	Henry Street	Koo Wee Rup	South Boundary Drain	Riverine
46	Henry Street	Koo Wee Rup	South Boundary Drain	Riverine
63	Henry Street	Koo Wee Rup	South Boundary Drain	Riverine
25	Hobson Road	Rythdale	McGregors Catchment Drain	Riverine
115	Hogans Road	Bayles	Number Seven Yallock Drain	Riverine
8	Hudsons Lane	Koo Wee Rup	Bunyip Main Outfall Drain	Riverine
9	Hudsons Lane	Koo Wee Rup	Bunyip Main Outfall Drain	Riverine
16	Hudsons Lane	Koo Wee Rup	Bunyip Main Outfall Drain	Riverine
30	Island Road	Koo Wee Rup	McGregors Catchment Drain	Riverine
60	Island Road	Koo Wee Rup	McGregors Catchment Drain	Riverine
160	Island Road	Koo Wee Rup	McGregors Catchment Drain	Riverine
170	Island Road	Koo Wee Rup	McGregors Catchment Drain	Riverine
190	Island Road	Koo Wee Rup	McGregors Catchment Drain	Riverine
200	Island Road	Koo Wee Rup	McGregors Catchment Drain	Riverine
210	Island Road	Koo Wee Rup	McGregors Catchment Drain	Riverine
230	Island Road	Koo Wee Rup	McGregors Catchment Drain	Riverine
250	Island Road	Koo Wee Rup	McGregors Catchment Drain	Riverine
290	Island Road	Koo Wee Rup	McGregors Catchment Drain	Riverine
300	Island Road	Koo Wee Rup	McGregors Catchment Drain	Riverine
310	Island Road	Koo Wee Rup	McGregors Catchment Drain	Riverine
215	Jeffers Road	Cora Lynn	Number Seven Yallock Drain	Riverine
305	Jeffers Road	Cora Lynn	Number Seven Yallock Drain	Riverine
2	John Street	Koo Wee Rup	Koo-Wee-Rup South Drain	Riverine
4	John Street	Koo Wee Rup	Koo-Wee-Rup South Drain	Riverine
8	John Street	Koo Wee Rup	Koo-Wee-Rup South Drain	Riverine
10	John Street	Koo Wee Rup	Koo-Wee-Rup South Drain	Riverine
190	Koo Wee Rup Road	Koo Wee Rup	McGregors Catchment Drain	Riverine
200	Koo Wee Rup Road	Koo Wee Rup	McGregors Catchment Drain	Riverine
250	Koo Wee Rup Road	Koo Wee Rup	McGregors Catchment Drain	Riverine
280	Koo Wee Rup Road	Koo Wee Rup	McGregors Catchment Drain	Riverine
310	Koo Wee Rup Road	Koo Wee Rup	McGregors Catchment Drain	Riverine
320	Koo Wee Rup Road	Koo Wee Rup	McGregors Catchment Drain	Riverine
350	Koo Wee Rup Road	Koo Wee Rup	McGregors Catchment Drain	Riverine
355	Koo Wee Rup Road	Koo Wee Rup	McGregors Catchment Drain	Riverine
380	Koo Wee Rup Road	Koo Wee Rup	McGregors Catchment Drain	Riverine

Properties at risk from Flooding in the Bunyip River catchment during a 1% AEP event

Properties at risk from Flooding in the Bunyip River catchment during a 1% AEP event				
Residential	Commercial	Industrial	Rural	Public Use
Street No. at Risk	Street	Suburb	Along Melbourne Water Watercourse	Flood Risk Type
520	Koo Wee Rup Road	Pakenham South	McGregors Catchment Drain	Riverine
730	Koo Wee Rup-Longwarry Road	Bayles	Yallock Creek	Riverine
750	Koo Wee Rup-Longwarry Road	Bayles	Yallock Creek	Riverine
755	Koo Wee Rup-Longwarry Road	Bayles	Yallock Creek	Riverine
765	Koo Wee Rup-Longwarry Road	Bayles	Yallock Creek	Riverine
770	Koo Wee Rup-Longwarry Road	Bayles	Yallock Creek	Riverine
780	Koo Wee Rup-Longwarry Road	Bayles	Yallock Creek	Riverine
830	Koo Wee Rup-Longwarry Road	Bayles	No.6 Yallock Drain	Riverine
850	Koo Wee Rup-Longwarry Road	Bayles	No.6 Yallock Drain	Riverine
870	Koo Wee Rup-Longwarry Road	Bayles	No.6 Yallock Drain	Riverine
905	Koo Wee Rup-Longwarry Road	Bayles	No.6 Yallock Drain	Riverine
960	Koo Wee Rup-Longwarry Road	Bayles	No.6 Yallock Drain	Riverine
970	Koo Wee Rup-Longwarry Road	Catani	No.6 Yallock Drain	Riverine
990	Koo Wee Rup-Longwarry Road	Catani	No.6 Yallock Drain	Riverine
8	Lapis Street	Koo Wee Rup	South Boundary Drain	Riverine
10	Lapis Street	Koo Wee Rup	South Boundary Drain	Riverine
5	Lea Road	Dalmore	McGregors Catchment Drain	Riverine
10	Lea Road	Dalmore	McGregors Catchment Drain	Riverine
85	Lea Road	Dalmore	McGregors Catchment Drain	Riverine
110	Lea Road	Koo Wee Rup	McGregors Catchment Drain	Riverine
135	Lea Road	Dalmore	McGregors Catchment Drain	Riverine
325	Little Road	Iona	Little Yannathan Road Drain	Riverine
430	Little Road	Iona	Murray Road Drain	Riverine
450	Little Road	Iona	Murray Road Drain	Riverine
455	Little Road	Iona	Murray Road Drain	Riverine
495	Little Road	Iona	Murray Road Drain	Riverine
540	Little Road	Iona	Murray Road Drain	Riverine
580	Little Road	Iona	Murray Road Drain	Riverine
1020	Longwarry-Modella Road	Modella	Modella Road Drain	Riverine
1030	Longwarry-Modella Road	Modella	Modella Road Drain	Riverine
210	Main Drain Road	Koo Wee Rup	Bunyip Main Outfall Drain	Riverine
220	Main Drain Road	Koo Wee Rup	Bunyip Main Outfall Drain	Riverine
230	Main Drain Road	Koo Wee Rup	Bunyip Main Outfall Drain	Riverine
250	Main Drain Road	Koo Wee Rup	Bunyip Main Outfall Drain	Riverine
270	Main Drain Road	Koo Wee Rup	Bunyip Main Outfall Drain	Riverine
290	Main Drain Road	Koo Wee Rup	Bunyip Main Outfall Drain	Riverine
320	Main Drain Road	Koo Wee Rup	Bunyip Main Outfall Drain	Riverine
340	Main Drain Road	Koo Wee Rup	Bunyip Main Outfall Drain	Riverine
360	Main Drain Road	Koo Wee Rup	Bunyip Main Outfall Drain	Riverine
380	Main Drain Road	Koo Wee Rup	Bunyip Main Outfall Drain	Riverine
420	Main Drain Road	Koo Wee Rup	Bunyip Main Outfall Drain	Riverine
430	Main Drain Road	Koo Wee Rup	Bunyip Main Outfall Drain	Riverine
1380	Main Drain Road	Cora Lynn	Bunyip Main Outfall Drain	Riverine
1420	Main Drain Road	Cora Lynn	Bunyip Main Outfall Drain	Riverine
1450	Main Drain Road	Cora Lynn	Bunyip Main Outfall Drain	Riverine

Properties at risk from Flooding in the Bunyip River catchment during a 1% AEP event

Residential	Commercial	Industrial	Rural	Public Use
Street No. at Risk	Street	Suburb	Along Melbourne Water Watercourse	Flood Risk Type
1480	Main Drain Road	Cora Lynn	Bunyip Main Outfall Drain	Riverine
1510	Main Drain Road	Cora Lynn	Bunyip Main Outfall Drain	Riverine
1580	Main Drain Road	Cora Lynn	Bunyip Main Outfall Drain	Riverine
1650	Main Drain Road	Cora Lynn	Bunyip Main Outfall Drain	Riverine
1670	Main Drain Road	Vervale	Bunyip Main Outfall Drain	Riverine
1800	Main Drain Road	Vervale	Bunyip Main Outfall Drain	Riverine
1840	Main Drain Road	Vervale	Bunyip Main Outfall Drain	Riverine
1860	Main Drain Road	Vervale	Bunyip Main Outfall Drain	Riverine
1870	Main Drain Road	Vervale	Bunyip Main Outfall Drain	Riverine
1890	Main Drain Road	Vervale	Bunyip Main Outfall Drain	Riverine
1910	Main Drain Road	Vervale	Bunyip Main Outfall Drain	Riverine
1920	Main Drain Road	Vervale	Bunyip Main Outfall Drain	Riverine
1970	Main Drain Road	Vervale	Bunyip Main Outfall Drain	Riverine
2010	Main Drain Road	Iona	Bunyip Main Outfall Drain	Riverine
2058	Main Drain Road	Iona	Bunyip Main Outfall Drain	Riverine
2060	Main Drain Road	Iona	Bunyip Main Outfall Drain	Riverine
2062	Main Drain Road	Iona	Bunyip Main Outfall Drain	Riverine
2066	Main Drain Road	Iona	Bunyip Main Outfall Drain	Riverine
2070	Main Drain Road	Iona	Bunyip Main Outfall Drain	Riverine
2090	Main Drain Road	Iona	Bunyip Main Outfall Drain	Riverine
2170	Main Drain Road	Iona	Bunyip Main Outfall Drain	Riverine
1115	Manks Road	Dalmore	McGregors Catchment Drain	Riverine
1120	Manks Road	Dalmore	McGregors Catchment Drain	Riverine
1135	Manks Road	Dalmore	McGregors Catchment Drain	Riverine
1150	Manks Road	Dalmore	McGregors Catchment Drain	Riverine
1160	Manks Road	Dalmore	McGregors Catchment Drain	Riverine
1170	Manks Road	Dalmore	McGregors Catchment Drain	Riverine
1190	Manks Road	Koo Wee Rup	McGregors Catchment Drain	Riverine
1215	Manks Road	Dalmore	McGregors Catchment Drain	Riverine
1230	Manks Road	Koo Wee Rup	McGregors Catchment Drain	Riverine
1255	Manks Road	Koo Wee Rup	McGregors Catchment Drain	Riverine
1285	Manks Road	Koo Wee Rup	McGregors Catchment Drain	Riverine
40	Mccraws Road	Catani	No.6 Yallock Drain	Riverine
10	Mcdonalds Road	Catani	Mo.6 Yallock Drain	Riverine
200	Mcdonalds Road	Catani	Number Seven Yallock Drain	Riverine
155	Mcdonalds Drain Road	Koo Wee Rup	Bunyip Main Outfall Drain	Riverine
175	Mcdonalds Drain Road	Koo Wee Rup	Bunyip Main Outfall Drain	Riverine
195	Mcdonalds Drain Road	Koo Wee Rup	Bunyip Main Outfall Drain	Riverine
205	Mcdonalds Drain Road	Koo Wee Rup	Bunyip Main Outfall Drain	Riverine
225	Mcdonalds Drain Road	Koo Wee Rup	Bunyip Main Outfall Drain	Riverine
400	Mcdonalds Drain Road	Koo Wee Rup	McDonalds Catchment Drain	Riverine
480	Mcdonalds Drain Road	Koo Wee Rup	McDonalds Catchment Drain	Riverine
500	Mcdonalds Drain Road	Koo Wee Rup	McDonalds Catchment Drain	Riverine
620	Mcdonalds Drain Road	Pakenham South	McDonalds Catchment Drain	Riverine
640	Mcdonalds Drain Road	Pakenham South	McDonalds Catchment Drain	Riverine



Properties at risk from Flooding in the Bunyip River catchment during a 1% AEP event

Properties at risk from Flooding in the Bunyip River catchment during a 1% AEP event				
Residential	Commercial	Industrial	Rural	Public Use
Street No. at Risk	Street	Suburb	Along Melbourne Water Watercourse	Flood Risk Type
660	Mcdonalds Drain Road	Pakenham South	McDondalds Catchment Drain	Riverine
670	Mcdonalds Drain Road	Pakenham South	McDondalds Catchment Drain	Riverine
680	Mcdonalds Drain Road	Pakenham South	McDondalds Catchment Drain	Riverine
700	Mcdonalds Drain Road	Pakenham South	McDondalds Catchment Drain	Riverine
770	Mcdonalds Drain Road	Pakenham South	McDondalds Catchment Drain	Riverine
790	Mcdonalds Drain Road	Pakenham South	McDondalds Catchment Drain	Riverine
830	Mcdonalds Drain Road	Pakenham South	McDondalds Catchment Drain	Riverine
940	Mcdonalds Drain Road	Pakenham	McDondalds Catchment Drain	Riverine
946	Mcdonalds Drain Road	Pakenham	McDondalds Catchment Drain	Riverine
965	Mcdonalds Drain Road	Pakenham	McDondalds Catchment Drain	Riverine
970	Mcdonalds Drain Road	Pakenham	McDondalds Catchment Drain	Riverine
980	Mcdonalds Drain Road	Pakenham	McDondalds Catchment Drain	Riverine
1000	Mcdonalds Drain Road	Pakenham	McDondalds Catchment Drain	Riverine
1020	Mcdonalds Drain Road	Pakenham	McDondalds Catchment Drain	Riverine
45	Mckays Road	Koo Wee Rup	Bunyip Main Outfall Drain	Riverine
10	Mckillop Road	Cora Lynn	Ten Mile Drain	Riverine
15	Mckillop Road	Cora Lynn	Ten Mile Drain	Riverine
4A	Mickle Street	Koo Wee Rup	Koo-Wee-Rup South Drain	Riverine
4	Mickle Street	Koo Wee Rup	Koo-Wee-Rup South Drain	Riverine
18	Milla Way	Koo Wee Rup	South Boundary Drain	Riverine
20	Milla Way	Koo Wee Rup	South Boundary Drain	Riverine
22	Milla Way	Koo Wee Rup	South Boundary Drain	Riverine
24	Milla Way	Koo Wee Rup	South Boundary Drain	Riverine
26	Milla Way	Koo Wee Rup	South Boundary Drain	Riverine
15	Monomeith Road	Monomeith	Yallock Creek	Riverine
20	Monomeith Road	Monomeith	Yallock Creek	Riverine
80	Monomeith Road	Caldermeade	Yallock Creek	Riverine
85	Monomeith Road	Monomeith	Yallock Creek	Riverine
95	Monomeith Road	Monomeith	Yallock Creek	Riverine
100	Monomeith Road	Monomeith	Yallock Creek	Riverine
105	Monomeith Road	Monomeith	Yallock Creek	Riverine
120	Monomeith Road	Monomeith	Yallock Creek	Riverine
125	Monomeith Road	Monomeith	Yallock Creek	Riverine
135	Monomeith Road	Monomeith	Yallock Creek	Riverine
1/25	Moody Street	Koo Wee Rup	South Boundary Drain	Riverine
2/25	Moody Street	Koo Wee Rup	South Boundary Drain	Riverine
27	Moody Street	Koo Wee Rup	South Boundary Drain	Riverine
115	Moody Street	Koo Wee Rup	South Boundary Drain	Riverine
117	Moody Street	Koo Wee Rup	South Boundary Drain	Riverine
119	Moody Street	Koo Wee Rup	South Boundary Drain	Riverine
121	Moody Street	Koo Wee Rup	South Boundary Drain	Riverine
127	Moody Street	Koo Wee Rup	South Boundary Drain	Riverine
129	Moody Street	Koo Wee Rup	South Boundary Drain	Riverine
35	Murray Road	Cora Lynn	Yallock Creek	Riverine
310	Murray Road	Cora Lynn	Murray Road Drain	Riverine

Properties at risk from Flooding in the Bunyip River catchment during a 1% AEP event

Residential	Commercial	Industrial	Rural	Public Use
Street No. at Risk	Street	Suburb	Along Melbourne Water Watercourse	Flood Risk Type
350	Murray Road	Cora Lynn	Murray Road Drain	Riverine
430	Murray Road	Cora Lynn	Murray Road Drain	Riverine
455	Murray Road	Cora Lynn	Murray Road Drain	Riverine
575	Murray Road	Vervale	Bunyip Main Outfall Drain	Riverine
725	Murray Road	Vervale	Murray Road Drain	Riverine
730	Murray Road	Iona	Murray Road Drain	Riverine
740	Murray Road	Iona	Murray Road Drain	Riverine
835	Murray Road	Iona	Murray Road Drain	Riverine
935	Murray Road	Iona	Murray Road Drain	Riverine
940	Murray Road	Iona	Murray Road Drain	Riverine
1030	Murray Road	Iona	Murray Road Drain	Riverine
1100	Murray Road	Bunyip	Murray Road Drain	Riverine
1115	Murray Road	Bunyip	Murray Road Drain	Riverine
1190	Murray Road	Bunyip	Murray Road Drain	Riverine
1300	Murray Road	Bunyip	Bunyip Main Outfall Drain	Riverine
40	Mynard Road	Bayles	Number Seven Yallock Drain	Riverine
90	Mynard Road	Bayles	Number Seven Yallock Drain	Riverine
130	Mynard Road	Bayles	Number Seven Yallock Drain	Riverine
510	Mynard Road	Catani	Number Seven Yallock Drain	Riverine
740	Mynard Road	Catani	Number Seven Yallock Drain	Riverine
80	Nar Nar Goon-Longwarry Road	Bunyip	Bunyip Main Outfall Drain	Riverine
1430	Nar Nar Goon-Longwarry Road	Bunyip	Bunyip Main Outfall Drain	Riverine
1490	Nar Nar Goon-Longwarry Road	Bunyip	Bunyip Main Outfall Drain	Riverine
1510	Nar Nar Goon-Longwarry Road	Bunyip	Bunyip Main Outfall Drain	Riverine
1542	Nar Nar Goon-Longwarry Road	Bunyip	Bunyip Main Outfall Drain	Riverine
1550	Nar Nar Goon-Longwarry Road	Bunyip	Bunyip Main Outfall Drain	Riverine
1560	Nar Nar Goon-Longwarry Road	Bunyip	Bunyip Main Outfall Drain	Riverine
165	Nine Mile Road	Tynong	Ten Mile Drain	Riverine
177	Nine Mile Road	Tynong	Ten Mile Drain	Riverine
185	Nine Mile Road	Tynong	Ten Mile Drain	Riverine
325	Nine Mile Road	Tynong	Ten Mile Drain	Riverine
370	Nine Mile Road	Tynong	Ten Mile Drain	Riverine
405	Nine Mile Road	Tynong	Ten Mile Drain	Riverine
585A	Nine Mile Road	Cora Lynn	Ten Mile Drain	Riverine
640	Nine Mile Road	Cora Lynn	Ten Mile Drain	Riverine
650	Nine Mile Road	Cora Lynn	Ten Mile Drain	Riverine
670	Nine Mile Road	Cora Lynn	Ten Mile Drain	Riverine
680	Nine Mile Road	Cora Lynn	Bunyip Main Outfall Drain	Riverine
700	Nine Mile Road	Cora Lynn	Bunyip Main Outfall Drain	Riverine
706	Nine Mile Road	Cora Lynn	Bunyip Main Outfall Drain	Riverine
710	Nine Mile Road	Cora Lynn	Bunyip Main Outfall Drain	Riverine
140	Number Five Drain Road	Monomeith	Yallock Creek	Riverine
275	Number Five Drain Road	Monomeith	Yallock Creek	Riverine
335	Number Seven Drain Road	Cora Lynn	Number Seven Yallock Drain	Riverine
10	Parish Road	Iona	Murray Road Drain	Riverine

Properties at risk from Flooding in the Bunyip River catchment during a 1% AEP event

Properties at risk from Flooding in the Bunyip River catchment during a 1% AEP event				
Residential	Commercial	Industrial	Rural	Public Use
Street No. at Risk	Street	Suburb	Along Melbourne Water Watercourse	Flood Risk Type
85	Parish Road	Iona	Murray Road Drain	Riverine
130	Parish Road	Iona	Murray Road Drain	Riverine
195	Pitt Road	Iona	Number Seven Yallock Drain	Riverine
220	Pitt Road	Iona	Number Seven Yallock Drain	Riverine
320	Pitt Road	Iona	Little Yannathan Road Drain	Riverine
360	Pitt Road	Iona	Little Yannathan Road Drain	Riverine
465	Pitt Road	Iona	Murray Road Drain	Riverine
470	Pitt Road	Iona	Murray Road Drain	Riverine
485	Pitt Road	Iona	Murray Road Drain	Riverine
526	Pitt Road	Iona	Murray Road Drain	Riverine
560	Pitt Road	Iona	Murray Road Drain	Riverine
35	Prestons Road	Koo Wee Rup	McGregors Catchment Drain	Riverine
53	Prestons Road	Koo Wee Rup	McGregors Catchment Drain	Riverine
55	Prestons Road	Koo Wee Rup	McGregors Catchment Drain	Riverine
110	Prestons Road	Koo Wee Rup	McGregors Catchment Drain	Riverine
115	Prestons Road	Koo Wee Rup	McGregors Catchment Drain	Riverine
4	Quinny Street	Koo Wee Rup	South Boundary Drain	Riverine
6	Quinny Street	Koo Wee Rup	South Boundary Drain	Riverine
190	Railway Road	Koo Wee Rup	McGregors Catchment Drain	Riverine
205	Railway Road	Dalmore	McGregors Catchment Drain	Riverine
210	Railway Road	Koo Wee Rup	McGregors Catchment Drain	Riverine
215	Railway Road	Koo Wee Rup	McGregors Catchment Drain	Riverine
255	Railway Road	Koo Wee Rup	McGregors Catchment Drain	Riverine
320	Railway Road	Koo Wee Rup	McGregors Catchment Drain	Riverine
330	Railway Road	Koo Wee Rup	McGregors Catchment Drain	Riverine
3	Ruby Avenue	Koo Wee Rup	South Boundary Drain	Riverine
5	Ruby Avenue	Koo Wee Rup	South Boundary Drain	Riverine
6	Ruby Avenue	Koo Wee Rup	South Boundary Drain	Riverine
7	Ruby Avenue	Koo Wee Rup	South Boundary Drain	Riverine
8	Ruby Avenue	Koo Wee Rup	South Boundary Drain	Riverine
9	Ruby Avenue	Koo Wee Rup	South Boundary Drain	Riverine
10	Ruby Avenue	Koo Wee Rup	South Boundary Drain	Riverine
11	Ruby Avenue	Koo Wee Rup	South Boundary Drain	Riverine
12	Ruby Avenue	Koo Wee Rup	South Boundary Drain	Riverine
13	Ruby Avenue	Koo Wee Rup	South Boundary Drain	Riverine
14	Ruby Avenue	Koo Wee Rup	South Boundary Drain	Riverine
15	Ruby Avenue	Koo Wee Rup	South Boundary Drain	Riverine
16	Ruby Avenue	Koo Wee Rup	South Boundary Drain	Riverine
17	Ruby Avenue	Koo Wee Rup	South Boundary Drain	Riverine
18	Ruby Avenue	Koo Wee Rup	South Boundary Drain	Riverine
19	Ruby Avenue	Koo Wee Rup	South Boundary Drain	Riverine
21	Ruby Avenue	Koo Wee Rup	South Boundary Drain	Riverine
23	Ruby Avenue	Koo Wee Rup	South Boundary Drain	Riverine
23-25	Salmon Street	Koo Wee Rup	South Boundary Drain	Riverine
27	Salmon Street	Koo Wee Rup	South Boundary Drain	Riverine

Properties at risk from Flooding in the Bunyip River catchment during a 1% AEP event

Properties at risk from Flooding in the Bunyip River catchment during a 1% AEP event				
Residential	Commercial	Industrial	Rural	Public Use
Street No. at Risk	Street	Suburb	Along Melbourne Water Watercourse	Flood Risk Type
29-31	Salmon Street	Koo Wee Rup	South Boundary Drain	Riverine
125	Scanlons Drain Road	Bayles	Number Seven Yallock Drain	Riverine
165	Scanlons Drain Road	Bayles	Number Seven Yallock Drain	Riverine
167	Scanlons Drain Road	Bayles	Number Seven Yallock Drain	Riverine
365	Seven Mile Road	Nar Nar Goon	Northern Boundary Drain	Riverine
495	Seven Mile Road	Nar Nar Goon	Seven Mile Drain	Riverine
525	Seven Mile Road	Nar Nar Goon	Seven Mile Drain	Riverine
535	Seven Mile Road	Nar Nar Goon	Seven Mile Drain	Riverine
545	Seven Mile Road	Nar Nar Goon	Seven Mile Drain	Riverine
555	Seven Mile Road	Nar Nar Goon	Seven Mile Drain	Riverine
560	Seven Mile Road	Nar Nar Goon	Seven Mile Drain	Riverine
565	Seven Mile Road	Nar Nar Goon	Seven Mile Drain	Riverine
575	Seven Mile Road	Nar Nar Goon	Seven Mile Drain	Riverine
600	Seven Mile Road	Nar Nar Goon	Seven Mile Drain	Riverine
645	Seven Mile Road	Nar Nar Goon	Seven Mile Drain	Riverine
778	Seven Mile Road	Nar Nar Goon	Seven Mile Drain	Riverine
780	Seven Mile Road	Nar Nar Goon	Seven Mile Drain	Riverine
800	Seven Mile Road	Nar Nar Goon	Bunyip Main Outfall Drain	Riverine
970	Seven Mile Road	Koo Wee Rup North	Bunyip Main Outfall Drain	Riverine
1010	Seven Mile Road	Koo Wee Rup North	Bunyip Main Outfall Drain	Riverine
1020	Seven Mile Road	Koo Wee Rup North	Bunyip Main Outfall Drain	Riverine
21	Shelton Park Drive	Koo Wee Rup	Koo-Wee-Rup South Drain	Riverine
24	Shelton Park Drive	Koo Wee Rup	Koo-Wee-Rup South Drain	Riverine
25	Shelton Park Drive	Koo Wee Rup	Koo-Wee-Rup South Drain	Riverine
26	Shelton Park Drive	Koo Wee Rup	Koo-Wee-Rup South Drain	Riverine
28	Shelton Park Drive	Koo Wee Rup	Koo-Wee-Rup South Drain	Riverine
30	Shelton Park Drive	Koo Wee Rup	Koo-Wee-Rup South Drain	Riverine
8	Silver Way	Koo Wee Rup	South Boundary Drain	Riverine
10	Silver Way	Koo Wee Rup	South Boundary Drain	Riverine
11	Silver Way	Koo Wee Rup	South Boundary Drain	Riverine
12	Silver Way	Koo Wee Rup	South Boundary Drain	Riverine
13	Silver Way	Koo Wee Rup	South Boundary Drain	Riverine
14	Silver Way	Koo Wee Rup	South Boundary Drain	Riverine
15	Silver Way	Koo Wee Rup	South Boundary Drain	Riverine
16	Silver Way	Koo Wee Rup	South Boundary Drain	Riverine
17	Silver Way	Koo Wee Rup	South Boundary Drain	Riverine
18	Silver Way	Koo Wee Rup	South Boundary Drain	Riverine
19	Silver Way	Koo Wee Rup	South Boundary Drain	Riverine
20	Silver Way	Koo Wee Rup	South Boundary Drain	Riverine
21	Silver Way	Koo Wee Rup	South Boundary Drain	Riverine
22	Silver Way	Koo Wee Rup	South Boundary Drain	Riverine
23	Silver Way	Koo Wee Rup	South Boundary Drain	Riverine
24	Silver Way	Koo Wee Rup	South Boundary Drain	Riverine
25	Silver Way	Koo Wee Rup	South Boundary Drain	Riverine
27	Silver Way	Koo Wee Rup	South Boundary Drain	Riverine

Properties at risk from Flooding in the Bunyip River catchment during a 1% AEP event

Residential	Commercial	Industrial	Rural	Public Use
Street No. at Risk	Street	Suburb	Along Melbourne Water Watercourse	Flood Risk Type
29	Silver Way	Koo Wee Rup	South Boundary Drain	Riverine
31	Silver Way	Koo Wee Rup	South Boundary Drain	Riverine
33	Silver Way	Koo Wee Rup	South Boundary Drain	Riverine
35	Silver Way	Koo Wee Rup	South Boundary Drain	Riverine
37	Silver Way	Koo Wee Rup	South Boundary Drain	Riverine
250	Simpson Road	Iona	Number Seven Yallock Drain	Riverine
270	Simpson Road	Iona	Number Seven Yallock Drain	Riverine
465	Simpson Road	Vervale	Murray Road Drain	Riverine
505	Simpson Road	Vervale	Murray Road Drain	Riverine
510	Simpson Road	Iona	Murray Road Drain	Riverine
10	Soldiers Road	Pakenham South	McGregors Catchment Drain	Riverine
40	Soldiers Road	Pakenham South	McGregors Catchment Drain	Riverine
90	Soldiers Road	Pakenham South	McGregors Catchment Drain	Riverine
145	Soldiers Road	Rythdale	McGregors Catchment Drain	Riverine
15	South Bank Road	Bunyip	Bunyip Main Outfall Drain	Riverine
25	South Bank Road	Bunyip	Bunyip Main Outfall Drain	Riverine
65	South Bank Road	Bunyip	Bunyip Main Outfall Drain	Riverine
95	South Bank Road	Bunyip	Bunyip Main Outfall Drain	Riverine
105	South Bank Road	Bunyip	Bunyip Main Outfall Drain	Riverine
115	South Bank Road	Bunyip	Bunyip Main Outfall Drain	Riverine
195	South Bank Road	Bunyip	Bunyip Main Outfall Drain	Riverine
215	South Bank Road	Bunyip	Bunyip Main Outfall Drain	Riverine
3500	South Gippsland Highway	Koo Wee Rup	Bunyip Main Outfall Drain	Riverine
3535	South Gippsland Highway	Koo Wee Rup	McGregors Catchment Drain	Riverine
3540	South Gippsland Highway	Koo Wee Rup	Bunyip Main Outfall Drain	Riverine
3545	South Gippsland Highway	Koo Wee Rup	Bunyip Main Outfall Drain	Riverine
3775	South Gippsland Highway	Koo Wee Rup	Koo-Wee-Rup South Drain	Riverine
3830	South Gippsland Highway	Koo Wee Rup	Koo-Wee-Rup South Drain	Riverine
3870	South Gippsland Highway	Koo Wee Rup	Yallock Creek	Riverine
3940	South Gippsland Highway	Koo Wee Rup	Yallock Creek	Riverine
172-180	Station Street	Koo Wee Rup	South Boundary Drain	Riverine
224	Station Street	Koo Wee Rup	Bunyip Main Outfall Drain	Riverine
10	Strafford Lane	Bunyip	Bunyip Main Outfall Drain	Riverine
15	Strafford Lane	Bunyip	Bunyip Main Outfall Drain	Riverine
20	Strafford Lane	Bunyip	Bunyip Main Outfall Drain	Riverine
44	Strafford Lane	Bunyip	Bunyip Main Outfall Drain	Riverine
48	Sybella Avenue	Koo Wee Rup	Koo-Wee-Rup South Drain	Riverine
49	Sybella Avenue	Koo Wee Rup	Koo-Wee-Rup South Drain	Riverine
50	Sybella Avenue	Koo Wee Rup	Koo-Wee-Rup South Drain	Riverine
51	Sybella Avenue	Koo Wee Rup	Koo-Wee-Rup South Drain	Riverine
52-54	Sybella Avenue	Koo Wee Rup	Koo-Wee-Rup South Drain	Riverine
53	Sybella Avenue	Koo Wee Rup	Koo-Wee-Rup South Drain	Riverine
85	Sybella Avenue	Koo Wee Rup	Koo-Wee-Rup South Drain	Riverine
150	Sybella Avenue	Koo Wee Rup	Koo-Wee-Rup South Drain	Riverine
105	Taplins Road	Catani	No.6 Yallock Drain	Riverine



Properties at risk from Flooding in the Bunyip River catchment during a 1% AEP event				
Residential	Commercial	Industrial	Rural	Public Use
Street No. at Risk	Street	Suburb	Along Melbourne Water Watercourse	Flood Risk Type
110	Taplins Road	Catani	No.6 Yallock Drain	Riverine
145	Taplins Road	Catani	No.6 Yallock Drain	Riverine
149	Taplins Road	Catani	No.6 Yallock Drain	Riverine
5	Temby Road	Iona	Murray Road Drain	Riverine
375	Temby Road	Iona	Number Seven Yallock Drain	Riverine
335	Thirteen Mile Road	Garfield	Bunyip Main Outfall Drain	Riverine
345	Thirteen Mile Road	Garfield	Bunyip Main Outfall Drain	Riverine
365	Thirteen Mile Road	Garfield	Bunyip Main Outfall Drain	Riverine
1	Ti-Tree Lane	Koo Wee Rup	South Boundary Drain	Riverine
2	Ti-Tree Lane	Koo Wee Rup	South Boundary Drain	Riverine
3	Ti-Tree Lane	Koo Wee Rup	South Boundary Drain	Riverine
185	Toner Road	Cora Lynn	Bunyip Main Outfall Drain	Riverine
210	Toner Road	Cora Lynn	Bunyip Main Outfall Drain	Riverine
2	Tower Road	Koo Wee Rup	Bunyip Main Outfall Drain	Riverine
10	Tower Road	Koo Wee Rup	Bunyip Main Outfall Drain	Riverine
3	Virgona Way	Koo Wee Rup	Koo-Wee-Rup South Drain	Riverine
80	Wally Road	Bunyip	Bunyip Main Outfall Drain	Riverine
1	Wetlands Circuit	Koo Wee Rup	Koo-Wee-Rup South Drain	Riverine
5	Whitta Lane	Nar Nar Goon	Seven Mile Drain	Riverine
10	Whitta Lane	Nar Nar Goon	Seven Mile Drain	Riverine
4	William Street	Koo Wee Rup	South Boundary Drain	Riverine
6	William Street	Koo Wee Rup	South Boundary Drain	Riverine
8	William Street	Koo Wee Rup	South Boundary Drain	Riverine
10	William Street	Koo Wee Rup	South Boundary Drain	Riverine
12	William Street	Koo Wee Rup	South Boundary Drain	Riverine
14	William Street	Koo Wee Rup	South Boundary Drain	Riverine
<b>Total</b>				
<b>646</b>				

Table C3.3 – Properties at risk of flooding within the Bunyip River catchment in Cardinia Shire

Properties listed in the table below are at risk from flooding along the Bunyip River's tributaries in Nar Nar Goon North, Pakenham Upper and Gembrook. As more intelligence becomes available, this list may change. This table has been populated based on modelling work as part of the Cardinia Northern Catchments (Cardno, September 2020) flood mapping and risk assessment program. Note that any multi-lot properties situated above ground floor likely impacted by isolation only with flooding on ground floor impacting access to common areas and/or carpark and storage facilities. Information on above ground-floor properties is not available in this list.

*This Property Flood Risk Table is presented by the Victoria State Emergency Service for the purpose of disseminating emergency management information. The contents of the information have not been independently verified by the Victoria State Emergency Service. No liability is accepted for any damage, loss or injury caused by errors or omissions in this information or for any action taken by any person in reliance upon it.*

Properties at risk from Flooding in Nar Nar Goon North, Pakenham Upper and Gembrook along Bunyip River's tributaries						
Residential			Commercial	Industrial	Rural	Public Use
Street No. at Risk in AEP Event			Address	Suburb	Along Melbourne Water Watercourse	Flood Risk Type
20% AEP	5% AEP	1% AEP				
✓	✓	✓	180 Bessie Creek Road	Nar Nar Goon North	Back Creek Tributary	Flash
✓	✓	✓	185 Bessie Creek Road	Nar Nar Goon North	Bessie Creek	Flash
✓	✓	✓	230 Bessie Creek Road	Nar Nar Goon North	Back Creek	Flash
✓	✓	✓	234 Bessie Creek Road	Nar Nar Goon North	Ararat Creek	Flash
	✓	✓	245 Bessie Creek Road	Nar Nar Goon North	Ararat Creek	Flash
		✓	265 Bessie Creek Road	Nar Nar Goon North	Ararat Creek	Flash
✓	✓	✓	285 Bessie Creek Road	Nar Nar Goon North	Ararat Creek	Flash
	✓	✓	325 Bessie Creek Road	Nar Nar Goon North	Ararat Creek	Flash
✓	✓	✓	360 Bessie Creek Road	Nar Nar Goon North	Ararat Creek	Flash
	✓	✓	370 Bessie Creek Road	Nar Nar Goon North	Ararat Creek	Flash
✓	✓	✓	405 Bessie Creek Road	Nar Nar Goon North	Ararat Creek	Flash
		✓	425 Bessie Creek Road	Nar Nar Goon North	Ararat Creek	Flash
✓	✓	✓	650 Bessie Creek Road	Nar Nar Goon North	Bessie Creek	Flash
✓	✓	✓	20 Clink Road	Pakenham Upper	Ararat Creek	Flash
		✓	635 Dore Road	Nar Nar Goon North	Diamond Creek	Flash
		✓	10 Moore Road	Nar Nar Goon North	Ararat Creek	Flash
	✓	✓	85 Moore Road	Nar Nar Goon North	Ararat Creek	Flash
	✓	✓	180 Moore Road	Nar Nar Goon North	Back Creek Tributary	Flash
✓	✓	✓	210 Moore Road	Nar Nar Goon North	Ararat Creek	Flash
✓	✓	✓	440 Mt Eirene Road	Gembrook	Ararat Creek	Flash
✓	✓	✓	944 Pakenham Road	Pakenham Upper	Ararat Creek	Flash
✓	✓	✓	60 Parker Road	Gembrook	Ararat Creek	Flash
		✓	44 Seymour Road	Nar Nar Goon North	Ararat Creek	Flash
		✓	62 Seymour Road	Nar Nar Goon North	Ararat Creek	Flash
✓	✓	✓	125 Trevor Road	Nar Nar Goon North	Ararat Creek	Flash
	✓	✓	140 Yarrabubba Road	Nar Nar Goon North	Ararat Creek	Flash
<b>Totals</b>						
<b>14</b>	<b>20</b>	<b>26</b>				

Table C3.4 – Properties at risk of flooding along Bunyip River's tributaries in Nar Nar Goon North, Pakenham Upper and Gembrook in Cardinia Shire

## Isolation

Koo Wee Rup, Cora Lynn, Bayles & Iona all have the potential to become isolated for a period of time in an intense rainfall event. All major and local roads are at risk from overtopping including the South Gippsland Hwy, Koo Wee Rup-Longwarry Rd, Ballarto Rd, Koo Wee Rup Rd & Bunyip River Rd. Areas of Koo Wee Rup town are expected to remain relatively dry during major flooding events. See mapping in **Appendix F** for where these areas are likely to be. Some localised short-duration isolation may occur due to flash flooding.

## Essential Infrastructure

- **Koo Wee Rup Hospital** is at risk from isolation during a 1% AEP flooding event in Koo Wee Rup. Access roads such as Rossiter Rd, Koo Wee Rup-Longwarry Rd, Sybella Ave & South

Gippsland Hwy are all at risk of closure during a major flooding event. The hospital is expected to remain relatively dry;

- The Koo Wee Rup **Police Station & CFA Fire Station** could become isolated if local roads become inundated and
- The **Telephone Exchange** in Bayles could become isolated from the closure of Ballarto Rd, Main Drain Rd and Koo Wee Rup-Longwary Rd due to floodwaters.

During an event, see the Public Transport Victoria's Website for details on delays or alterations to services. <http://ptv.vic.gov.au/live-travel-updates/>. A map of Public Transport routes within Cardinia Shire is available via the website at: [https://www.ptv.vic.gov.au/assets/default-site/more/maps/Local-area-maps/Metropolitan/f8a4ef286e/8\\_Cardinia\\_LAM.pdf](https://www.ptv.vic.gov.au/assets/default-site/more/maps/Local-area-maps/Metropolitan/f8a4ef286e/8_Cardinia_LAM.pdf)

Apart from the roads outlined below, all other essential infrastructure and services areas around Koo Wee Rup, Cora Lynn, Iona & Bayles are expected to remain unaffected by flooding during a 1% AEP (100yr ARI) event.

## Road Closures

The following roads are subject to closure during flooding around Koo Wee Rup, Cora Lynn, Iona & Bayles. Check the VicRoads website for more details: <https://traffic.vicroads.vic.gov.au/>

Department of Transport (VicRoads) Roads flooded in a 1% AEP (100yr ARI) event
• Ballarto Road, Koo Wee Rup between McDonalds Drain Road East and Seven Mile Road
• Koo Wee Rup - Longwary Road, Bayles
• Koo Wee Rup - Longwary Road, Modella near Fallon Road
• Koo Wee Rup - Longwary Road, Modella near Glover Road
• Koo Wee Rup Bypass, Koo Wee Rup
• Rossiter Road, Koo Wee Rup at the Koo Wee Rup Bypass
• South Gippsland Highway, Koo Wee Rup
• Sybella Avenue, Koo Wee Rup

Table C3.5 – Department of Transport (VicRoads) Possible Road Closures during a flooding event

Cardinia Shire Council Roads flooded in a 1% AEP (100yr ARI) event			
<b>BAYLES</b>	<ul style="list-style-type: none"> <li>Main Drain Road</li> </ul>	<ul style="list-style-type: none"> <li>Bollen Way</li> </ul>	<b>KOO WEE RUP NORTH</b>
<ul style="list-style-type: none"> <li>Boxshall Road</li> </ul>	<ul style="list-style-type: none"> <li>Main Drain Road South</li> </ul>	<ul style="list-style-type: none"> <li>Boormani Court</li> </ul>	<ul style="list-style-type: none"> <li>Bunyip River Road</li> </ul>
<ul style="list-style-type: none"> <li>Finks Road</li> </ul>	<ul style="list-style-type: none"> <li>Murray Road</li> </ul>	<ul style="list-style-type: none"> <li>Boundary Drain Road</li> </ul>	<ul style="list-style-type: none"> <li>Hall Road</li> </ul>
<ul style="list-style-type: none"> <li>Hogans Road</li> </ul>	<ul style="list-style-type: none"> <li>Toner Road</li> </ul>	<ul style="list-style-type: none"> <li>Catani Avenue</li> </ul>	<ul style="list-style-type: none"> <li>Seven Mile Road</li> </ul>
<ul style="list-style-type: none"> <li>McClures Road</li> </ul>	<b>GARFIELD</b>	<ul style="list-style-type: none"> <li>Daleys Road</li> </ul>	<b>MODELLA</b>
<ul style="list-style-type: none"> <li>Number Four Drain Road East</li> </ul>	<ul style="list-style-type: none"> <li>Brownhill Road</li> </ul>	<ul style="list-style-type: none"> <li>Denhams Road</li> </ul>	<ul style="list-style-type: none"> <li>Glover Road</li> </ul>
<ul style="list-style-type: none"> <li>Number Seven Drain Road</li> </ul>	<ul style="list-style-type: none"> <li>Lone Pipe Road</li> </ul>	<ul style="list-style-type: none"> <li>Diamond Drive</li> </ul>	<b>MONOMEITH</b>
<ul style="list-style-type: none"> <li>Scanlons Drain Road</li> </ul>	<b>GEMBROOK</b>	<ul style="list-style-type: none"> <li>Emerald Grove</li> </ul>	Number Five Drain Road
<ul style="list-style-type: none"> <li>School Road</li> </ul>	<ul style="list-style-type: none"> <li>Aqueduct Track</li> </ul>	<ul style="list-style-type: none"> <li>Fechner Road</li> </ul>	<b>NAR NAR GOON</b>
<b>BUNYIP</b>	<ul style="list-style-type: none"> <li>Bunyip River Road</li> </ul>	<ul style="list-style-type: none"> <li>Henry Street</li> </ul>	Convent School Road
<ul style="list-style-type: none"> <li>Anderson Road</li> </ul>	<b>IONA</b>	<ul style="list-style-type: none"> <li>Hudson Lane</li> </ul>	<ul style="list-style-type: none"> <li>Hall Road</li> </ul>
<ul style="list-style-type: none"> <li>Bastin Road</li> </ul>	<ul style="list-style-type: none"> <li>Bunyip-Modella Road</li> </ul>	<ul style="list-style-type: none"> <li>Jade Avenue</li> </ul>	Whitta Lane
<ul style="list-style-type: none"> <li>Berry Lane</li> </ul>	<ul style="list-style-type: none"> <li>Carses Road</li> </ul>	<ul style="list-style-type: none"> <li>John Street</li> </ul>	<b>NAR NAR GOON NORTH</b>
<ul style="list-style-type: none"> <li>Drake Court</li> </ul>	<ul style="list-style-type: none"> <li>Fallon Road</li> </ul>	<ul style="list-style-type: none"> <li>Lapis Street</li> </ul>	<ul style="list-style-type: none"> <li>Bessie Creek Road</li> </ul>
<ul style="list-style-type: none"> <li>Enticott Road</li> </ul>	<ul style="list-style-type: none"> <li>Little Road</li> </ul>	<ul style="list-style-type: none"> <li>Main Drain Road South</li> </ul>	<ul style="list-style-type: none"> <li>Dore Road</li> </ul>
<ul style="list-style-type: none"> <li>Evans Road</li> </ul>	<ul style="list-style-type: none"> <li>Main Drain Road</li> </ul>	<ul style="list-style-type: none"> <li>McDonalds Drain Road</li> </ul>	<ul style="list-style-type: none"> <li>Ingram Road</li> </ul>
<ul style="list-style-type: none"> <li>Mclvor Road</li> </ul>	<ul style="list-style-type: none"> <li>Murray Road</li> </ul>	<ul style="list-style-type: none"> <li>McDonalds Drain Road East</li> </ul>	<ul style="list-style-type: none"> <li>Moore Road</li> </ul>
<ul style="list-style-type: none"> <li>South Bank Road</li> </ul>	<ul style="list-style-type: none"> <li>Number Seven Drain Road</li> </ul>	<ul style="list-style-type: none"> <li>McKays Road</li> </ul>	<ul style="list-style-type: none"> <li>Seymour Road</li> </ul>
<ul style="list-style-type: none"> <li>Strafford Lane</li> </ul>	<ul style="list-style-type: none"> <li>Parish Road</li> </ul>	<ul style="list-style-type: none"> <li>Mickle Street</li> </ul>	<ul style="list-style-type: none"> <li>Snell Road</li> </ul>
<ul style="list-style-type: none"> <li>Wally Road</li> </ul>	<ul style="list-style-type: none"> <li>Pitt Road</li> </ul>	<ul style="list-style-type: none"> <li>Milla Way</li> </ul>	<ul style="list-style-type: none"> <li>Yarrabubba Road</li> </ul>
<b>CATANI</b>	<ul style="list-style-type: none"> <li>Simpson Road</li> </ul>	<ul style="list-style-type: none"> <li>Moody Street</li> </ul>	<b>PAKENHAM SOUTH</b>
<ul style="list-style-type: none"> <li>Caldermeade Road</li> </ul>	<ul style="list-style-type: none"> <li>Temby Road</li> </ul>	<ul style="list-style-type: none"> <li>Quinny Street</li> </ul>	<ul style="list-style-type: none"> <li>Five Mile Road</li> </ul>
<ul style="list-style-type: none"> <li>Hornbuckle Road</li> </ul>	<b>KOO WEE RUP</b>	<ul style="list-style-type: none"> <li>Ruby Avenue</li> </ul>	<ul style="list-style-type: none"> <li>McDonalds Drain Road East</li> </ul>
<ul style="list-style-type: none"> <li>Humphries Road</li> </ul>	<ul style="list-style-type: none"> <li>Alexandra Avenue</li> </ul>	<ul style="list-style-type: none"> <li>Salmon Street</li> </ul>	<b>VERVALE</b>
<ul style="list-style-type: none"> <li>Taplins Road</li> </ul>	<ul style="list-style-type: none"> <li>Amber Lane</li> </ul>	<ul style="list-style-type: none"> <li>Silver Way</li> </ul>	<ul style="list-style-type: none"> <li>Bunyip River Road</li> </ul>
<b>CORA LYNN</b>	<ul style="list-style-type: none"> <li>Bailey Boulevard</li> </ul>	<ul style="list-style-type: none"> <li>Ti-Tree Lane</li> </ul>	<ul style="list-style-type: none"> <li>Dessent Road</li> </ul>
<ul style="list-style-type: none"> <li>Bennett Road</li> </ul>	<ul style="list-style-type: none"> <li>Barnes Way</li> </ul>	<ul style="list-style-type: none"> <li>Tower Road</li> </ul>	<ul style="list-style-type: none"> <li>Gunn Road</li> </ul>
<ul style="list-style-type: none"> <li>Bunyip River Road</li> </ul>	<ul style="list-style-type: none"> <li>Bellairs Place</li> </ul>	<ul style="list-style-type: none"> <li>Townley Road</li> </ul>	<ul style="list-style-type: none"> <li>Main Drain Road South</li> </ul>
<ul style="list-style-type: none"> <li>Dessent Road</li> </ul>	<ul style="list-style-type: none"> <li>Blackfish Drive</li> </ul>	<ul style="list-style-type: none"> <li>William Street</li> </ul>	<ul style="list-style-type: none"> <li>Murray Road</li> </ul>
<ul style="list-style-type: none"> <li>Eleven Mile Road</li> </ul>	<ul style="list-style-type: none"> <li>Bladens Road</li> </ul>		<ul style="list-style-type: none"> <li>Walker Road</li> </ul>

Table C3.6 – Cardinia Shire Council Possible flooded roads due to flash flooding over 30cm depth

## Flood Mitigation

### Levees

Levee	Reach	Side	Levee Height	Levee Length	Expected Level of Protection	ANCOLD Hazard Rating	Consequences of Failure	VicMap Central Reference
Bunyip Main Drain	13 Mile Rd to Cora Lynne	South	Unavailable	6.0m	Unavailable	Low	3 houses & agricultural land flooded	6765 D12-6764J13
Bunyip Main Drain	13 Mile Rd to Cora Lynne	North	Unavailable	4.7m	Unavailable	Significant	27 houses, 2 industrial buildings & agricultural land flooded	6765 C12-6764 H13
Bunyip Main Drain	Cora Lynne to Ballarto Rd	North	2.5m	6.4m	Unavailable	Significant	14 houses, 9 industrial buildings & agricultural land flooded	6764 H13-6764 B15
Bunyip Main Drain	Cora Lynne to Ballarto Rd	South	2.5m	6.4m	Unavailable	Significant	10 houses, 13 industrial buildings & agricultural land flooded	6764 H13-6764 B15
Bunyip Main Drain	Ballarto Rd to Railway Line	North	4m	6.6m	Unavailable	Significant	4 houses, 12 industrial buildings & agricultural land flooded	6764 B15-6822 G4
Bunyip Main Drain	Ballarto Rd to Railway Line	South	4m	6.6m	Unavailable	Significant	45 houses, 19 industrial buildings & agricultural land	6764 B15 - 6822 G4
Bunyip Main Drain	Railway Line to South Gippsland Hwy	North	3m	2.3m	Unavailable	Very Low	Agricultural land flooded	6822 G4-F6
Bunyip Main Drain	Railway Line to South Gippsland Hwy	South	3m	2.3m	Unavailable	Very Low	Agricultural land flooded	6822 G4-F6
Bunyip Main Drain	South Gippsland Hwy to Westernport Bay	North	1m	1.4m	Unavailable	Very Low	Agricultural land flooded	6822E6-D7
Bunyip Main Drain	South Gippsland Hwy to Westernport Bay	South	1m	2.0m	Unavailable	Very Low	Agricultural land flooded	6822E7-F8
Yallock Outfall	Cora Lynne to Bayles	West	2m	4.8m	Unavailable	Significant	13 houses, 8 industrial buildings & agricultural land flooded	6764H14-6823F2
Yallock Outfall	Cora Lynne to Bayles	East	2m	5.0m	Unavailable	Low	6 houses, 1 industrial building & agricultural land flooded	6764H14-6823F2
Yallock Outfall	Bayles to Railway Line	West	2m	7.8m	Unavailable	Low	4 houses, 5 industrial buildings & agricultural land flooded	6823F2-6822J6
Yallock Outfall	Bayles to Yallock Straight Cut	East	2m	3.3m	Unavailable	Low	2 houses, 1 industrial building & agricultural land flooded	6823F2-6823C4
Yallock Outfall	Yallock Straight Cut to Railway Line	East	2m	3.6m	Unavailable	Very Low	Agricultural land flooded	6823C4-6822K6



Levee	Reach	Side	Levee Height	Levee Length	Expected Level of Protection	ANCOLD Hazard Rating	Consequences of Failure	VicMap Central Reference
Yallock Outfall	Railway Line to Sth Gippsland Hwy	West	2m	0.8m	Unavailable	Very Low	Agricultural land flooded	6822J6
Yallock Outfall	Yallock Straight Cut from Railway Line to Sth Gippsland Hwy	East	2m	0.4m	Unavailable	Very Low	Agricultural land flooded	6822K6
Yallock Outfall	Sth Gippsland Hwy to Westernport Bay	West	1m	2.5m	Unavailable	Very Low	Agricultural land flooded	6822J6-G8
Yallock Outfall	Sth Gippsland Hwy to Westernport Bay	East	1m	2.2m	Unavailable	Very Low	Agricultural land flooded	6822K6-H8

Table C3.7 – Melbourne Water Levees in the Bunyip River Catchment in Cardinia Shire

## Sewerage Infrastructure

Sewerage Infrastructure of note during a severe flood event located within the Bunyip River catchment is contained within the following table. To view their locations, view mapping in **Appendix F**. It is possible a number of un-sewered properties are located within the catchment also.

### Sewer Pumping Stations

Sewerage Pumping Station	On Drain / Waterway	Bank / Side of Waterway	Operator	Location	Melway Reference
Multiple PS's for residential properties in Koo Wee Rup	Bunyip Main Outfall Drain		South East Water	Koo Wee Rup	
Haynes Close	Tea Tree Creek	South	South East Water	Haynes Close, Bunyip	VicMap 6765 G7
Jefferson Road	Local Drainage		South East Water	Jefferson Road, Garfield	VicMap 6765 E8
James Street	Little Lang Lang River		South East Water	James Street, Lang Lang	6823 E12
Modella Road	Bunyip Showground Drain		South East Water	Modella Road, Bunyip	VicMap 6765 H8
Nellie Street	Lang Lang River		South East Water	Nellie Street, Lang Lang	VicMap 6823 E12
Officer South Road	Officer South Drain		South East Water	Officer South Road, Officer	214 G8
Railway Avenue	Local Drainage		South East Water	Railway Avenue, Bunyip	VicMap 6765 G8
Thirteen Mile Road	Thirteen Mile Drain		South East Water	Thirteen Mile Road, Garfield	VicMap 6765 D7
Tresize Court	Little Lang Lang River		South East Water	Tresize Court, Lang Lang	VicMap 6823 E11
Wattletree Road	Local Drainage		South East Water	Wattletree Road, Bunyip	VicMap 6765 J7

Table C3.8 – Sewer Pumping Stations within the Bunyip River Catchment in Cardinia Shire

## **Flood Impacts & Operational Considerations (Intelligence Cards)**

The tables on the following pages provide a breakdown of the possible consequences of flooding along the Bunyip River at various river heights or rain totals within Cardinia. These tables are to be used only as a guide as no two floods at a location will have identical impacts.

Intelligence Cards have been included for the following locations:

- Bunyip River at Headworks;
- Bunyip River at Tonimbuk;
- Bunyip River at Longwarry North;
- Bunyip Main Outfall Drain at Iona;
- Bunyip Main Outfall Drain at Cora Lynn Ford and
- Bunyip Main Outfall Drain at Koo Wee Rup.

# FLOOD INTELLIGENCE CARD – HEADWORKS GAUGE, BUNYIP RIVER

Version 4 – March 2021



Note: flood intelligence records are approximations. This is because no two floods at a location, even if they peak at the same height, will have identical impacts. Flood intelligence cards detail the relationship between flood magnitude and flood consequences. More details about flood intelligence and its use can be found in the Australian Emergency Management Manuals flood series.

This Flood Intelligence Card publication is presented by the Victoria State Emergency Service for the purpose of disseminating emergency management information. The contents of the information have not been independently verified by the Victoria State Emergency Service. No liability is accepted for any damage, loss or injury caused by errors or omissions in this information or for any action taken by any person in reliance upon it. **Scan the QR code for the current levels for this gauge.**



LOCATION:	Along the Aqueduct Track in Gentle Annie. Eastern side of the River
CURRENT LEVEL:	<a href="https://www.melbournwater.com.au/water-data-and-education/rainfall-and-river-levels#/reader/228207A">https://www.melbournwater.com.au/water-data-and-education/rainfall-and-river-levels#/reader/228207A</a>
STREAM:	Bunyip River
GAUGE NUMBER:	228207A
GAUGE ZERO:	122.10m AHD
GAUGE TYPE:	Stream Level & Rain

VICMAP REFERENCE:	Central 6699 K6
MINOR:	Not Established
MODERATE:	Not Established
MAJOR:	Not Established
LEVEE HEIGHT:	N/A
HIGHEST RECORDED FLOOD:	1.33m (3 <sup>rd</sup> February 2005)

River Height	Annual Exceedance Probability (% AEP)	Consequence / Impact	Operational Considerations
0.5m		<ul style="list-style-type: none"> <li>Expect Minor Flood Level reached at Iona within 1 – 24 hours</li> </ul>	<p>VICSES State and Region to provide warnings to the community and other agencies.</p> <p>VICSES will provide warnings using OSOM and SMSER as required based on the predications provided by BoM regarding flood levels and the risk of Flash Flooding. The Central Duty officer in conjunction with the Regional Agency Commander will maintain operational awareness and form an appropriate response arrangement to suit the level of incident.</p>
Unavailable	1% AEP (100yr ARI) Flood Level	<p><b>Water Over Road</b></p> <ul style="list-style-type: none"> <li>Aqueduct Track, Gembrook at River crossings</li> <li>Bunyip River Road, Gembrook at River crossing</li> </ul>	Council to provide road closure signage if required.

Table C3.9 – Breakdown of likely consequences at various Headworks gauge level heights along the Bunyip River with operational considerations

# FLOOD INTELLIGENCE CARD – TONIMBUK GAUGE, BUNYIP RIVER

Version 4 – March 2021



Note: flood intelligence records are approximations. This is because no two floods at a location, even if they peak at the same height, will have identical impacts. Flood intelligence cards detail the relationship between flood magnitude and flood consequences. More details about flood intelligence and its use can be found in the Australian Emergency Management Manuals flood series.

This Flood Intelligence Card publication is presented by the Victoria State Emergency Service for the purpose of disseminating emergency management information. The contents of the information have not been independently verified by the Victoria State Emergency Service. No liability is accepted for any damage, loss or injury caused by errors or omissions in this information or for any action taken by any person in reliance upon it. **Scan the QR code for the current levels for this gauge.**



LOCATION:	Western bank of the River off Jolley Road, Tonimbuk
CURRENT LEVEL:	<a href="https://www.melbournewater.com.au/water-data-and-education/rainfall-and-river-levels#/reader/228212A">https://www.melbournewater.com.au/water-data-and-education/rainfall-and-river-levels#/reader/228212A</a>
STREAM:	Bunyip River
GAUGE NUMBER:	228212A
GAUGE ZERO:	58.360m AHD
GAUGE TYPE:	Stream Level & Rain

VICMAP REFERENCE:	Central 6700 B14
MINOR:	Not Established
MODERATE:	Not Established
MAJOR:	Not Established
LEEVE HEIGHT:	N/A
HIGHEST RECORDED FLOOD:	2.63m (5 <sup>th</sup> February 2011)

River Height	Annual Exceedance Probability (% AEP)	Consequence / Impact	Operational Considerations
Unavailable	1% AEP (100yr ARI) Flood Level	<b>Water Over Road</b> <ul style="list-style-type: none"> <li>Bunyip River Road, Gembrook at River crossing</li> </ul>	Council to provide road closure signage if required.

Table C3.10 – Breakdown of likely consequences at various Tonimbuk gauge level heights along Bunyip River with operational considerations

# FLOOD INTELLIGENCE CARD – LONGWARRY NORTH GAUGE, BUNYIP RIVER

Version 4 – March 2021



Note: flood intelligence records are approximations. This is because no two floods at a location, even if they peak at the same height, will have identical impacts. Flood intelligence cards detail the relationship between flood magnitude and flood consequences. More details about flood intelligence and its use can be found in the Australian Emergency Management Manuals flood series.

This Flood Intelligence Card publication is presented by the Victoria State Emergency Service for the purpose of disseminating emergency management information. The contents of the information have not been independently verified by the Victoria State Emergency Service. No liability is accepted for any damage, loss or injury caused by errors or omissions in this information or for any action taken by any person in reliance upon it. **Scan the QR code for the current levels for this gauge.**

LOCATION:	Western bank of the river 700m down an unnamed road off Morrison Road, Longwarry North
CURRENT LEVEL:	<a href="https://www.melbournwater.com.au/water-data-and-education/rainfall-and-river-levels#/reader/228255A">https://www.melbournwater.com.au/water-data-and-education/rainfall-and-river-levels#/reader/228255A</a>
STREAM:	Bunyip River
GAUGE NUMBER:	228255A
GAUGE ZERO:	23.970m AHD
GAUGE TYPE:	Stream Level & Rain

VICMAP REFERENCE:	Central 6766 A6
MINOR:	Not Established
MODERATE:	Not Established
MAJOR:	Not Established
LEVEE HEIGHT:	N/A
HIGHEST RECORDED FLOOD:	8.99m (5 <sup>th</sup> February 2011)

River Height	Annual Exceedance Probability (% AEP)	Consequence / Impact	Operational Considerations
2.2m		<ul style="list-style-type: none"> <li>Minor flooding expected at Iona</li> </ul>	VICSES State and Region to provide warnings to the community and other agencies. VICSES will provide warnings using OSOM and SMSER as required based on the predications provided by BoM regarding flood levels and the risk of Flash Flooding. The Central Duty officer in conjunction with the Regional Agency Commander will maintain operational awareness and form an appropriate response arrangement to suit the level of incident.
Unavailable	1% AEP (100yr ARI) Flood Level	<p><b>Properties at Flood Risk</b>  <b>2 Properties in Total</b></p> <ul style="list-style-type: none"> <li>286 Abeckett Road, Bunyip</li> <li>8 Drake Court, Bunyip</li> </ul> <p><b>Water Over Road</b></p> <ul style="list-style-type: none"> <li>Drake Court, Bunyip</li> </ul>	<p>VICSES to respond to requests on case by case basis</p> <p>Council to provide road closure signage if required.</p>

Table C3.11 – Breakdown of likely consequences at various Longwarry North gauge level heights along Bunyip River with operational considerations



# FLOOD INTELLIGENCE CARD – IONA GAUGE, BUNYIP MAIN OUTFALL DRAIN

Version 4 – March 2021



Note: flood intelligence records are approximations. This is because no two floods at a location, even if they peak at the same height, will have identical impacts. Flood intelligence cards detail the relationship between flood magnitude and flood consequences. More details about flood intelligence and its use can be found in the Australian Emergency Management Manuals flood series.

This Flood Intelligence Card publication is presented by the Victoria State Emergency Service for the purpose of disseminating emergency management information. The contents of the information have not been independently verified by the Victoria State Emergency Service. No liability is accepted for any damage, loss or injury caused by errors or omissions in this information or for any action taken by any person in reliance upon it. **Scan the QR code for the current levels for this gauge.**



LOCATION:	North side of the drain at Fourteen Mile Road, Iona
CURRENT LEVEL:	<a href="https://www.melbournewater.com.au/water-data-and-education/rainfall-and-river-levels#/reader/228213A">https://www.melbournewater.com.au/water-data-and-education/rainfall-and-river-levels#/reader/228213A</a>
STREAM:	Bunyip River
GAUGE NUMBER:	228213A
GAUGE ZERO:	20.88m AHD
GAUGE TYPE:	Stream Level & Rain

VICMAP REFERENCE:	Central 6765 E11
MINOR:	2.1m
MODERATE:	5.0m
MAJOR:	6.0m
LEVEE HEIGHT:	10.0m approx.
HIGHEST RECORDED FLOOD:	7.33m (5 <sup>th</sup> February 2011)

River Height	Flood Class or Annual Exceedance Probability (% AEP)	Consequence / Impact	Operational Considerations
1.8m		<ul style="list-style-type: none"> <li>Gates closed at Cora Lynn Ford</li> </ul>	<p>VICSES State and Region to provide warnings to the community and other agencies.</p> <p>VICSES will provide warnings using OSOM and SMSER as required based on the predications provided by BoM regarding flood levels and the risk of Flash Flooding. The Central Duty officer in conjunction with the Regional Agency Commander will maintain operational awareness and form an appropriate response arrangement to suit the level of incident.</p> <p>Melbourne Water close gate across Cora Lynn Ford following release of minor flood level warning</p>
2.1m	<b>MINOR FLOOD LEVEL</b>	<p><b>Water Over Road</b></p> <ul style="list-style-type: none"> <li>Main Drain Road, Cora Lynn at Cora Lynn Ford</li> </ul>	Council to provide road closure signage if required.
4.73m	20% AEP (5yr ARI) Flood Level (Minor)	<ul style="list-style-type: none"> <li>Flooding occurring in paddocks and rural properties as backing up occurs alongside many roadways in the area which act as levees</li> </ul>	VICSES to respond to requests on case by case basis
5.0m	<b>MODERATE FLOOD LEVEL</b>	<p><b>Properties at Flood Risk</b></p> <p><b>11 New at Level; 11 Properties in Total</b></p> <ul style="list-style-type: none"> <li>1255, 1275, 1285 &amp; 1325 Bunyip River Road, Iona</li> <li>895, 955 &amp; 995 Bunyip River Road, Vervale</li> <li>225, 255, 325 &amp; 415 Bunyip-Modella Road, Bunyip</li> </ul>	<p>VICSES to respond to requests on case by case basis</p> <p>Council to provide road closure signage if required.</p>

River Height	Flood Class or Annual Exceedance Probability (% AEP)	Consequence / Impact	Operational Considerations
		<b>Water Over Road (over 0.3m depth)</b> <ul style="list-style-type: none"> <li>Bunyip – Modella Road, Iona between Main Drain Road South and Koo Wee Rup – Longwarry Road</li> <li>Little Road, Iona</li> </ul>	
5.4m	10% AEP (10 year ARI) (Moderate)	<b>Properties at Flood Risk</b> <b>9 New at Level; 20 Properties in Total</b> <ul style="list-style-type: none"> <li>420, 450, 455, 465, 485, 490, 710, 730, 735 Bunyip-Modella Road, Iona</li> </ul> <b>Water Over Road (over 0.3m depth)</b> <ul style="list-style-type: none"> <li>Gunn Road, Vervale</li> <li>Walker Road, Vervale</li> </ul>	VICSES to respond to requests on case by case basis  Council to provide road closure signage if required.
5.94m	30 <sup>th</sup> July 1996 Flood Level Peak	<b>Event Summary</b> <ul style="list-style-type: none"> <li>Levee overtopped downstream of gauge at Ballarto Rd. Maintenance works have since heightened the levee at this point.</li> </ul>	
6.0m	<b>MAJOR FLOOD LEVEL</b> 5% AEP (20 year ARI)	<b>Properties at Flood Risk</b> <b>16 New at Level; 36 Properties in Total</b> <ul style="list-style-type: none"> <li>1215 Bunyip River Road, Iona</li> <li>250, 270 &amp; 510 Simpson Road, Iona</li> <li>195, 360, 470, 485, 526 &amp; 560 Pitt Road, Iona</li> <li>935 &amp; 1115 Murray Road, Bunyip</li> <li>835 Murray Road, Iona</li> <li>725 Murray Road, Vervale</li> <li>510 &amp; 740 Mynard Road, Catani</li> </ul> <b>Community Infrastructure Flooded</b> <ul style="list-style-type: none"> <li>St Joseph's Catholic Church, Bunyip River Road, Iona</li> </ul> <b>Essential Infrastructure Impacted</b> <ul style="list-style-type: none"> <li>Possible Overtopping of Levee System downstream of gauge between Cora Lynn and Ballarto Road and along the Yallock Outfall to Bayles. Note that the condition of drain will vary the height at which levees are overtopped (e.g. amount of silt and vegetation in drain)</li> </ul> <b>Water Over Road (over 0.3m depth)</b> <ul style="list-style-type: none"> <li>Murray Road, Iona, Vervale &amp; Cora Lynn</li> <li>Main Drain Road South, Iona, Vervale &amp; Cora Lynn</li> <li>Bunyip River Road, Iona, Vervale &amp; Cora Lynn</li> <li>Fallon Road, Iona</li> <li>Carses Road, Iona</li> </ul>	VICSES to respond to requests on case by case basis  Council to consider contacting Church on 59425293 to ensure they are aware of situation.  VICSES to consider monitoring of levee system.  Council to provide road closure signage if required.
6.6m	2% AEP (50 year ARI) (Major)	<b>Properties at Flood Risk</b> <b>1 New at Level; 37 Properties in Total</b> <ul style="list-style-type: none"> <li>580 Little Road, Iona</li> </ul> <b>Community Infrastructure Flooded</b> <ul style="list-style-type: none"> <li>Little Road Chapel on Little Road, Iona</li> </ul> <b>Water Over Road (over 0.3m depth)</b>	VICSES to respond to requests on case by case basis  Council to provide road closure signage if required.

River Height	Flood Class or Annual Exceedance Probability (% AEP)	Consequence / Impact	Operational Considerations
		<ul style="list-style-type: none"> <li>Parish Road, Iona between Murray Road, and Bunyip – Modella Road</li> <li>Pitt Road, Iona</li> <li>Humphries Road, Catani</li> <li>Simpson Road, Iona</li> </ul>	
7.33m	5 <sup>th</sup> February 2011 Flood Level Peak	<p><b>Event Summary</b></p> <ul style="list-style-type: none"> <li>175mm of Rain over 28hrs</li> <li>6,000 evacuation orders given for Iona, Cora Lynn, Koo Wee Rup &amp; Bayles</li> <li>A number of properties in Iona town were inundated, dozens more isolated</li> <li>Large numbers of farmers' crops affected by floodwaters</li> <li>Levee upstream of Iona was overtopped, limiting flooding downstream at Koo Wee Rup</li> <li>St Joseph's Church inundated along with neighbouring properties northeast of Bunyip River Rd &amp; Fourteen Mile Rd intersection</li> <li>Broiler farms on Eleven Mile Rd Inundated</li> <li>Floodwaters level with road at Walker Rd Bridge</li> <li>Farms Inundated south of Bunyip River along Murray Rd between Iona &amp; Cora Lynn</li> </ul>	<p>VICSES State and Region to provide warnings to the community and other agencies.</p> <p>VICSES will provide warnings using OSOM and SMSER as required based on the predications provided by BoM regarding flood levels and the risk of Flash Flooding. The Central Duty officer in conjunction with the Regional Agency Commander will maintain operational awareness and form an appropriate response arrangement to suit the level of incident.</p>
7.65m	1% AEP (100yr ARI) Flood Level (Major)	<p><b>Properties at Flood Risk</b></p> <ul style="list-style-type: none"> <li>Additional approx. 110 properties likely flooded in Bunyip, Tynong, Iona, Catani, Vervale &amp; Garfield</li> </ul> <p><b>Water Over Road (over 0.3m depth)</b></p> <ul style="list-style-type: none"> <li>South Bank Road, Bunyip</li> <li>Anderson Road, Bunyip</li> <li>Wally Road, Bunyip (floods under train overpass)</li> <li>Enticott Road, Bunyip</li> <li>Berry Lane, Bunyip</li> <li>Strafford Lane, Bunyip</li> <li>Bastin Road, Bunyip</li> <li>Evans Road, Bunyip</li> <li>Mclvor Road, Bunyip</li> <li>Brownbill Road, Garfield</li> <li>Lone Pine Road, Garfield near Gunn Road</li> <li>Koo Wee Rup – Longwarry Road, Modella near Fallon Road</li> <li>Koo Wee Rup – Longwarry Road, Modella near Glover Road</li> <li>Glover Road, Modella</li> <li>Number Seven Drain Road, Iona</li> <li>Hornbuckle Road, Catani</li> <li>Taplins Road, Catani</li> <li>Caldermeade Road, Catani</li> </ul>	<p>VICSES to respond to requests on case by case basis</p> <p>Council to provide road closure signage if required.</p>

River Height	Flood Class or Annual Exceedance Probability (% AEP)	Consequence / Impact	Operational Considerations
		<ul style="list-style-type: none"> <li>• Temby Road, Iona</li> <li>• Dessent Road, Vervale &amp; Cora Lynn</li> </ul>	
10.0m		<ul style="list-style-type: none"> <li>• Approximate Levee Height at gauge</li> </ul>	

Table C3.12 – Breakdown of likely consequences at various Iona gauge level heights along the Bunyip Main Outfall Drain with operational considerations

# FLOOD INTELLIGENCE CARD – CORA LYNN GAUGE, BUNYIP MAIN OUTFALL DRAIN

Version 4 – March 2021



Note: flood intelligence records are approximations. This is because no two floods at a location, even if they peak at the same height, will have identical impacts. Flood intelligence cards detail the relationship between flood magnitude and flood consequences. More details about flood intelligence and its use can be found in the Australian Emergency Management Manuals flood series.

This Flood Intelligence Card publication is presented by the Victoria State Emergency Service for the purpose of disseminating emergency management information. The contents of the information have not been independently verified by the Victoria State Emergency Service. No liability is accepted for any damage, loss or injury caused by errors or omissions in this information or for any action taken by any person in reliance upon it. **Scan the QR code for the current levels for this gauge.**

LOCATION:	Southeast corner of the Bunyip Main and No. 4 Yallock Drains Junction on Main Drain Rd South, Cora Lynn
CURRENT LEVEL:	<a href="https://www.melbournewater.com.au/water-data-and-education/rainfall-and-river-levels#/reader/228380A">https://www.melbournewater.com.au/water-data-and-education/rainfall-and-river-levels#/reader/228380A</a>
STREAM:	Bunyip River
GAUGE NUMBER:	228380A
GAUGE ZERO:	11.360m AHD
GAUGE TYPE:	Stream Level

VICMAP REFERENCE:	Central 6764 J13
MINOR:	3.1m
MODERATE:	4.1m
MAJOR:	4.5m
LEVEE HEIGHT:	5.3m
HIGHEST RECORDED FLOOD:	4.63m (5 <sup>th</sup> February 2011)

River Height	Flood Class or Annual Exceedance Probability (% AEP)	Consequence / Impact	Operational Considerations
2.2m		<ul style="list-style-type: none"> <li>Top of rock dam across the Bunyip River</li> </ul>	
3.07m		<b>Water Over Road</b> <ul style="list-style-type: none"> <li>Main Drain Road at Cora Lynn Ford</li> </ul>	Melbourne Water close gate across Cora Lynn Ford following release of minor flood level warning.
3.1m	<b>MINOR FLOOD LEVEL</b>		VICSES State and Region to provide warnings to the community and other agencies. VICSES will provide warnings using OSOM and SMSE as required based on the predications provided by BoM regarding flood levels and the risk of Flash Flooding. The Central Duty officer in conjunction with the Regional Agency Commander will maintain operational awareness and form an appropriate response arrangement to suit the level of incident.
4.1m	<b>MODERATE FLOOD LEVEL</b>	<b>Water Over Road (over 0.3m depth)</b> <ul style="list-style-type: none"> <li>Number Seven Drain Road, Bayles</li> <li>Koo Wee Rup – Longwarry Road, Bayles</li> <li>School Road, Bayles near Koo Wee Rup – Longwarry Road between the Yallock Outfall Drain and School Road</li> <li>Finks Road, Bayles</li> <li>Number Five Drain Road, Monomeith</li> </ul>	Council to provide road closure signage if required.



River Height	Flood Class or Annual Exceedance Probability (% AEP)	Consequence / Impact	Operational Considerations
4.5m	MAJOR FLOOD LEVEL	<p><b>Properties at Flood Risk</b></p> <ul style="list-style-type: none"> <li>Approximately 70 Properties in Cora Lynn, Nar Nar Goon, Bayles and Monomeith likely flooded</li> </ul> <p><b>Community Infrastructure Flooded</b></p> <ul style="list-style-type: none"> <li>Cora Lynn Reserve &amp; Public Hall, Nine Mile Road, Cora Lynn</li> </ul> <p><b>Water Over Road (over 0.3m depth)</b></p> <ul style="list-style-type: none"> <li>Bunyip River Road, Vervale, Cora Lynn &amp; Koo Wee Rup North</li> <li>Main Drain Road South, Vervale, Cora Lynn &amp; Koo Wee Rup</li> <li>Eleven Mile Road, Cora Lynn South of Main Drain Road South</li> <li>Murray Road, Cora Lynn at the Murray Road Bridge and between Bennetts Road and Toner Road</li> <li>Hogans Road, Bayles</li> <li>Toner Road, Cora Lynn</li> <li>McClures Road, Bayles</li> <li>Scanlons Drain Road, Bayles between Number Four Drain Road East and McClures Road</li> <li>Number Four Drain Road East, Bayles</li> <li>Boxshall Road, Bayles</li> <li>Convent School Road, Nar Nar Goon</li> <li>Whitta Lane, Nar Nar Goon</li> <li>Hall Road, Nar Nar Goon</li> <li>Five Mile Road, Pakenham South</li> <li>Seven Mile Road, Koo Wee Rup North between Bunyip River Road and Fechner Road</li> <li>Ballarto Road, Koo Wee Rup between McDonalds Drain Road East and Seven Mile Road</li> </ul>	<p>VICSES to respond to requests on case by case basis</p> <ul style="list-style-type: none"> <li></li> </ul> <p>Council to consider contacting the Reserve/Hall CoM to implement emergency plan</p> <p>Council to provide road closure signage if required.</p>
4.63m	5 <sup>th</sup> February 2011 Flood Level Peak (Major)	<p><b>Event Summary</b></p> <ul style="list-style-type: none"> <li>6,000 evacuation orders given for Iona, Cora Lynn, Koo Wee Rup &amp; Bayles</li> <li>Koo Wee Rup-Longwarry Rd cut at the Yallock Outfall Bridge in Bayles</li> <li>Properties flooded along Murray Road</li> <li>Residences on eastern side of Seven Mile Road flooded</li> <li>Residences on Convent School Road flooded</li> </ul>	<p>VICSES State and Region to provide warnings to the community and other agencies. VICSES will provide warnings using OSOM and SMSER as required based on the predications provided by BoM regarding flood levels and the risk of Flash Flooding. The Central Duty officer in conjunction with the Regional Agency Commander will maintain operational awareness and form an appropriate response arrangement to suit the level of incident.</p>
5.3m	1% AEP (100yr ARI) Flood Level (Major)	<p><b>Properties at Flood Risk</b></p> <ul style="list-style-type: none"> <li>Additional 75 properties likely flooded in Cora Lynn &amp; Bayles</li> </ul> <p><b>Essential Infrastructure Impacted</b></p> <ul style="list-style-type: none"> <li>Possible overtopping of levee along Murray Road</li> </ul> <p><b>Water Over Road (over 0.3m depth)</b></p> <ul style="list-style-type: none"> <li>Dessent Road, Cora Lynn</li> <li>Bennett Road, Cora Lynn</li> </ul>	<p>VICSES to respond as per request by request basis.</p> <ul style="list-style-type: none"> <li></li> </ul>

River Height	Flood Class or Annual Exceedance Probability (% AEP)	Consequence / Impact	Operational Considerations
			VICSES to consider monitoring of levee system.  Council to provide road closure signage if required.

Table C3.13 – Breakdown of likely consequences at various Cora Lynn gauge level heights along the Bunyip Main Outfall Drain with operational considerations

# FLOOD INTELLIGENCE CARD – KOO WEE RUP GAUGE, BUNYIP MAIN OUTFALL DRAIN

Version 4 – March 2021



Note: flood intelligence records are approximations. This is because no two floods at a location, even if they peak at the same height, will have identical impacts. Flood intelligence cards detail the relationship between flood magnitude and flood consequences. More details about flood intelligence and its use can be found in the Australian Emergency Management Manuals flood series.

This Flood Intelligence Card publication is presented by the Victoria State Emergency Service for the purpose of disseminating emergency management information. The contents of the information have not been independently verified by the Victoria State Emergency Service. No liability is accepted for any damage, loss or injury caused by errors or omissions in this information or for any action taken by any person in reliance upon it. **Scan the QR code for the current levels for this gauge.**



LOCATION:	Along Bunyip Main Drain at Disused Railway Bridge 100m South of Station St, Koo Wee Rup
CURRENT LEVEL:	<a href="https://www.melbournewater.com.au/water-data-and-education/rainfall-and-river-levels#/reader/228395A">https://www.melbournewater.com.au/water-data-and-education/rainfall-and-river-levels#/reader/228395A</a>
STREAM:	Bunyip River
GAUGE NUMBER:	228395A
GAUGE ZERO:	0.00m AHD
GAUGE TYPE:	Stream Level & Rain

VICMAP REFERENCE:	Central 6822 G4
MINOR:	Not Established
MODERATE:	Not Established
MAJOR:	Not Established
LEVEE HEIGHT:	Unavailable
HIGHEST RECORDED FLOOD:	4.89m (5 <sup>th</sup> February 2011)

River Height	Annual Exceedance Probability (% AEP)	Consequence / Impact	Operational Considerations
2.9m		<ul style="list-style-type: none"> <li>Overtopping of North West Drain (which runs parallel to Bunyip River)</li> </ul>	<p>VICSES State and Region to provide warnings to the community and other agencies.</p> <p>VICSES will provide warnings using OSOM and SMSER as required based on the predications provided by BoM regarding flood levels and the risk of Flash Flooding. The Central Duty officer in conjunction with the Regional Agency Commander will maintain operational awareness and form an appropriate response arrangement to suit the level of incident.</p>
4.41m	June 2012 Flood Event Level	<p><b>Event Summary</b></p> <ul style="list-style-type: none"> <li>Localised moderate flooding occurred in Koo Wee Rup, associated with the Boundary Road Drain. 6 properties were flooded in Catani and around 25-30 properties in Koo Wee Rup were evacuated as a precautionary measure</li> <li>Properties flooded along Salmon St, Ti Tree La, Blackfish Dr &amp; Henry St</li> </ul>	<p>VICSES State and Region to provide warnings to the community and other agencies.</p> <p>VICSES will provide warnings using OSOM and SMSER as required based on the predications provided by BoM regarding flood levels and the risk of Flash Flooding. The Central Duty officer in conjunction with the Regional Agency Commander will maintain operational awareness and form an appropriate response arrangement to suit the level of incident.</p>
4.76m	1% AEP (100yr ARI) Flood Level	<p><b>Properties at Flood Risk</b></p> <ul style="list-style-type: none"> <li>Approximately 350 Properties in Koo Wee Rup, Koo Wee Rup North, Pakenham South and parts of Dalmore likely flooded</li> </ul> <p><b>Community Infrastructure Flooded</b></p>	<p>VICSES to respond as per request by request basis.</p>

River Height	Annual Exceedance Probability (% AEP)	Consequence / Impact	Operational Considerations
		<ul style="list-style-type: none"> <li>• St John the Baptist Primary School on Station Street, Koo Wee Rup with Sports Grounds Flooded</li> <li>• Westernport Nursing Home on Koo Wee Rup-Longwarry Rd, Koo Wee Rup affected by isolation of Koo Wee Rup town</li> </ul> <p><b>Essential Infrastructure Impacted</b></p> <ul style="list-style-type: none"> <li>• Koo Wee Rup Hospital possibly affected by access issues resulting from South Gippsland Hwy being cut, along with local roads; Rossiter Rd west of the Hospital; Sybella Ave; Koo Wee Rup Road; &amp; Koo Wee Rup-Longwarry Rd in Bayles. Hospital itself expected to remain relatively dry</li> <li>• The Koo Wee Rup Police Station &amp; CFA Fire Station could become isolated if local roads become inundated.</li> <li>• The Telephone Exchange in Bayles could become isolated from the closure of Ballarto Rd, Main Drain Rd and Koo Wee Rup-Longwarry Rd due to floodwaters</li> </ul> <p><b>Water Over Road (Over 0.3m Depth)</b></p> <ul style="list-style-type: none"> <li>• Ballarto Road, Koo Wee Rup between McDonalds Drain Road East and Seven Mile Road</li> <li>• Seven Mile Road, Koo Wee Rup North between Bunyip River Road and Fechner Road</li> <li>• Five Mile Road, Pakenham South</li> <li>• Hall Road, Koo Wee Rup North</li> <li>• McDonalds Drain Road East, Pakenham South &amp; Koo Wee Rup</li> <li>• McDonalds Drain Road, Koo Wee Rup between Fechner Road and Railway Road</li> <li>• Fechner Road, Koo Wee Rup</li> <li>• McKays Road, Koo Wee Rup</li> <li>• Main Drain Road South, Koo Wee Rup</li> <li>• Bladens Road, Koo Wee Rup near Boundary Drain Road</li> <li>• Daleys Road, Koo Wee Rup at Main Drain Road South and Boundary Drain Road Intersections</li> <li>• Boundary Drain Road, Koo Wee Rup near Denhams Road and near Hudson Lane</li> <li>• Denhams Road, Koo Wee Rup</li> <li>• Silver Way, Koo Wee Rup</li> <li>• Emerald Crescent, Koo Wee Rup</li> <li>• Ruby Avenue, Koo Wee Rup</li> <li>• Moody Street, Koo Wee Rup</li> <li>• Diamond Drive, Koo Wee Rup</li> <li>• Jade Avenue, Koo Wee Rup</li> <li>• Amber Lane, Koo Wee Rup</li> <li>• Lapis Street, Koo Wee Rup</li> <li>• Milla Way, Koo Wee Rup</li> <li>• Quinny Street, Koo Wee Rup</li> <li>• Tower Road, Koo Wee Rup</li> <li>• Hudson Lane, Koo Wee Rup</li> <li>• Blackfish Drive, Koo Wee Rup</li> <li>• Ti-Tree Lane, Koo Wee Rup</li> </ul>	

River Height	Annual Exceedance Probability (% AEP)	Consequence / Impact	Operational Considerations
		<ul style="list-style-type: none"> <li>• Henry Street, Koo Wee Rup</li> <li>• Boomani Court, Koo Wee Rup</li> <li>• Salmon Street, Koo Wee Rup</li> <li>• William Street, Koo Wee Rup</li> <li>• John Street, Koo Wee Rup</li> <li>• Townley Road, Koo Wee Rup</li> <li>• Mickle Street, Koo Wee Rup</li> <li>• Alexandra Avenue, Koo Wee Rup</li> <li>• Bellairs Place, Koo Wee Rup</li> <li>• Bailey Boulevard, Koo Wee Rup</li> <li>• Sybella Avenue, Koo Wee Rup</li> <li>• Bollen Way, Koo Wee Rup</li> <li>• Barnes Way, Koo Wee Rup</li> <li>• Catani Avenue, Koo Wee Rup</li> <li>• South Gippsland Highway, Koo Wee Rup</li> <li>• Koo Wee Rup Bypass, Koo Wee Rup</li> <li>• Rossiter Road, Koo Wee Rup at the Koo Wee Rup Bypass</li> </ul>	<p>DET/School to implement emergency plans if required Hospital and Nursing Home to consider implementing emergency plans. For information on possible evacuation triggers refer to Appendix D.</p> <p>VICPOL &amp; CFA to monitor and keep IC informed of ability to continue service. VICPOL &amp; CFA to consider the need to relocate services/resources. VICSES to consider protection of telephone exchange if time permits.</p> <ul style="list-style-type: none"> <li>• DoT/Council to provide road closure signage if required.</li> </ul>
4.88m	February 2011 Flood Event Level	<p><b>Event Summary</b></p> <ul style="list-style-type: none"> <li>• 6,000 evacuation orders given for Iona, Cora Lynn, Koo Wee Rup &amp; Bayles</li> <li>• 51 Patients evacuated from Koo Wee Rup Hospital on the potential isolation of the hospital</li> <li>• Residents in Koo Wee Rup township isolated as Sth Gippsland Hwy cut along with local access roads surrounding town</li> <li>• Farms Inundated between McDonalds Drain Road, Ballarto Road &amp; Fechner Road</li> </ul>	<p>KWR Hospital decided to self-evacuate when river level reached 6.7m at Iona. Approx 6 hours required to complete evacuation of 40 patients. 1635-2142 hrs VicPol assisted with evacuation.</p>

Table C3.14 – Breakdown of likely consequences at various Koo Wee Rup gauge level heights along the Bunyip Main Outfall Drain with operational considerations