

Waste Guide 2023



Cardinia Shire Council



Your household bins



Council provides kerbside rubbish and recycling collections to eligible households. The food and garden waste bin is an optional service with an additional charge.

!
If your bin is
damaged or cracked,
contact Council for a
free repair.



Rubbish

Collected weekly
Dark green or red lid
Available in 120L
or 80L



Recycling

Collected fortnightly
Yellow lid
240L



Food and Garden waste

(optional)
Collected fortnightly
Lime green lid
Available in 240L
or 120L



To check your bin day, visit www.cardinia.vic.gov.au/binday

Presenting your bins correctly helps ensure they can be emptied.



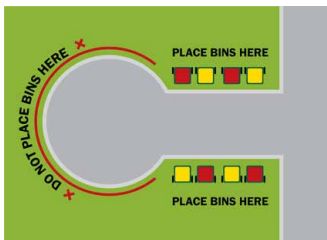
Correct bin placement:

- ✓ Place bins on the kerbside the night before collection. Return to your property within 24 hours of being emptied.
- ✓ Allow at least 50cm between bins and other objects such as light poles, street signs and trees.
- ✗ Do not park in front of bins or place bins behind cars.
- ✗ Each bin must weigh less than 70kg.
- ✗ Do not over fill bins - lids must close.
- ✗ Waste outside bins won't be collected.



Collections in a court

If you live in a court or T-shaped street, place bins on the straight part of the street only.



Recycling bin



Accepted items

Recycling correctly helps ensure items can be turned into new products and reduces waste going to landfill.



Clean paper

(including newspapers, magazines and mail)



Cardboard

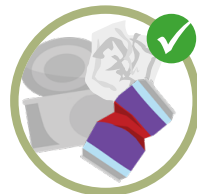
(clean, dry and flattened)



Plastic containers and bottles



Glass bottles and jars



Steel cans and aluminium cans, trays, crumpled foil

Top Recycling tips

- Do not bag your recycling, keep items loose
- Make sure containers are empty, rinsed and dry
- If in doubt, leave it out to reduce contamination



Recycling bin

Keep these items out of your Recycling bin



Soft 'scrunchable' plastics **cannot** go in your household recycling bin. Put them in your rubbish bin instead.

Plastic bags or bagged household waste



Soft plastic packaging or wrappers



Clothing, textiles or shoes



Electrical items (e-waste)



Polystyrene or foam



Toys (includes plastic and soft toys)



Takeaway coffee cups, straws or cutlery



Shredded paper



Nappies or sanitary items



General household plastic



www.cardinia.vic.gov.au/recycling



Are you a good sort?

Recycle right and you could win in the draw to win a gift card!



Food and Garden waste bin



Accepted items

Once collected, your food and garden waste is turned into compost and used on farms and gardens across Victoria.

?

Did you know:
you can place small amounts of soiled cardboard, human or animal hair and feathers in the food and garden bin?



Small branches, twigs and garden clippings



Weeds, flowers, leaves and grass



Fruit and vegetable scraps



Meat, seafood and dairy products



Bread, pasta, rice and baked goods



Paper towel, tissues and shredded paper



Food and Garden bin

Free caddy and compostable liners

All new food and garden waste bins come with a free kitchen caddy.

Order free compostable liners online or from Customer Service.

*Only certified AS4736 liners are accepted - look for the logo



Keep these items out of your Food and Garden waste bin



No plastic bags – use our free lime green, certified compostable bags instead.

Plastic bags, packaging or produce stickers



Bagged garden waste



Tea bags or coffee pods



Gardening equipment
(such as plant pots, fake turf, edging)



Soil, rubble, rocks or bricks



Pet poo or kitty litter



Treated timber, large branches or stumps



Bio-degradable or compostable packaging or coffee cups



Did you know: when food waste breaks down in landfill, it produces methane, a harmful greenhouse gas? Placing food waste in your green bin or home compost can help to reduce your environmental impact.



www.cardinia.vic.gov.au/greenbin



Rubbish bin



Accepted items

All waste in your rubbish bin is sent to landfill where it will not be used again.



**Broken glass
and ceramics**



**Nappies and
sanitary items**



**Kitty litter and
pet poo**



**Damaged
clothing, textiles
and shoes**



**Household
rubbish**



Broken toys



**Soft plastics
and plastic bags**



**Polystyrene
and foam**

Rubbish bin lids are changing

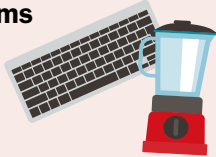
All new rubbish bins have red lids, rather than green, as part of a gradual change over to meet Australian Standards.



Keep these items out of your Rubbish bin



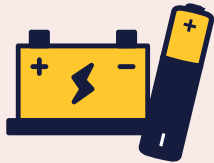
Electrical items (e-waste)



Paint and paint tins



Batteries



Soil and rubble



Garden waste



Household recyclables



Hazardous chemicals



Unsure how to dispose of something?

Check our A to Z list on page
12 for tips on how to dispose
of these items or visit
www.cardinia.vic.gov.au/atoz



Downsize to a
smaller rubbish
bin to save on your
yearly rates.

www.cardinia.vic.gov.au/waste

9



Booked hard waste collection



Eligible households receive two free booked hard waste collections per calendar year.

Additional paid collections are also available.



To book, visit
www.cardinia.vic.gov.au/hardwaste
or call 1300 787 624





Items with this logo are recycled and may be collected by different trucks on different days.








Accepted – Sort your items into these piles.



General waste

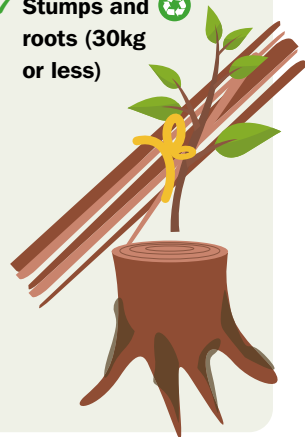
- ✓ Carpet
- ✓ Couches
- ✓ Furniture
- ✓ Polystyrene
- ✓ Household items
- ✓ Bed bases
- ✓ Mirrors, glass (wrap and label 'glass')
- ✓ Timber pieces (max 12 pieces, 1.5m long)
- ✓ Car tyres (max 4) 
- ✓ Mattresses (set aside) 

Metal and e-waste

- ✓ Scrap metal 
- ✓ Small car parts (no springs)
- ✓ Hot water systems 
- ✓ Paint tins (empty with lid off)
- ✓ E-waste (any item with a cord or battery – remove batteries first) 
- ✓ Whitegoods  (remove doors)
- ✓ Appliances 

Green waste

- ✓ Tree branches and prunings (Must be tied with string or twine) 
- ✓ Stumps and roots (30kg or less) 

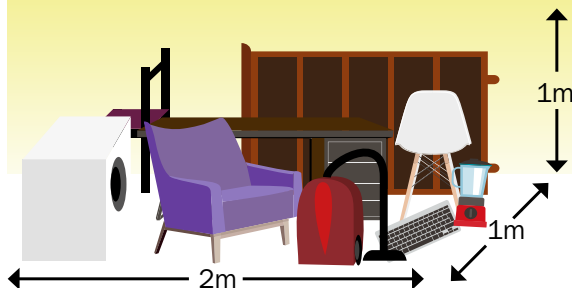


Top Tips

- Consider donating or selling good quality items first.
- Maximum 2 cubic metres per collection (2m x 1m x 1m).
- Always book before putting waste out.
- Only place items out the weekend before your allocated week.
- Individual items must weigh less than 30kg and be under 1.5m long.
- Contact Council before your collection if someone has added waste to your pile.



Waste put out earlier than the weekend before your collection, or without a booking will be treated as dumped rubbish and can incur a fine of up to \$6000.



Not accepted

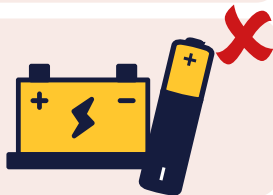
General household rubbish, food or recyclables



Barbed wire, fencing panels or fencing wire



Batteries*



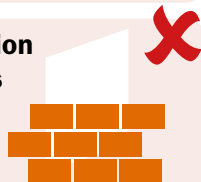
Gas bottles



Paint or chemicals*



Building or renovation materials, asbestos or cement sheeting



www.cardinia.vic.gov.au/hardwaste



* Check our A-Z Guide on the next page for tips on disposing of these items.



A to Z waste guide



For a full list scan QR code or check
www.cardinia.vic.gov.au/atoz



1 Recycling bin

2 Food and green waste bin

3 Rubbish bin

4 Booked hard waste

5 E-waste drop off points

6 Compost

7 Sell, donate or give away

8 Green waste drop-off days

9 Detox Your Home

10 Transfer stations

1	Aerosol can (empty)
1	Aluminium can, trays, foil (clean, scrunch into ball)
3	Animal poo
7 4	Appliances
3	Baking paper
3	Bags (reusable bags)
5	Batteries (household)
3	Bottle tops (small plastic)
3	Bubble wrap
1	Bottles (glass and plastic)

3	Gloves (disposables or damaged reusables)
2 6	Hair
4 10	Hot water unit
1	Jars (glass or plastic)
1	Jar lids (plastic or metal, larger than your palm)
3	Kitty litter
3	Face masks and PPE
7 4	Mattresses
5	Mobile phones

10	Bricks, building and renovation material	3	Nappies (disposable)
1 10 4	Cardboard	10	Paint
3	Cartons (long life milk & juice)	2 6	Paper towel
5	CDs and DVDs	2 6	Paper (shredded)
3	Ceramics and crockery (broken)	3	Pill or blister packet
9	Chemicals (household)	2 6	Pizza box (oily)
3	Chip and chocolate packaging	1	Pizza box lid (clean)
7	Clothing, textiles (good condition)	3	Plant pots
3	Clothing, textiles (poor condition)	3	Plastic bags
6 3	Compostable bags, packaging	3 4	Polystyrene and foam
5	Computers and computer parts	4 10	Scrap metal
3	Coffee cups and lids	3	Shoes (poor condition)
3	Coffee pods	5	Smoke alarms
4 5 10	Electronics (E-waste)	10	Soil or dirt
9	Fertiliser (liquid)	7	Toys (plastic, good condition)
3	Food pouches (yoghurt or baby food)	3	Toys (plastic, poor condition)
2 6 3	Food waste	4 10	Tyres
7 4	Furniture	9	Weed killer
2 4 8	Garden waste	3	Wet wipes
7 4	Glass windows, mirrors, tables	7 4	Whitegoods
		5	X-rays



E-waste and Free waste drop-offs



Electronic waste (E-waste)

E-waste refers to any item with a battery, cord or plug at the end of its useful life. These items cannot go in any of your household bins. Instead, you can take small e-waste items (phones, tablets, batteries) to one of our collection points throughout the Shire.

Larger items and appliances can be booked as part of your hard waste collection or taken to some transfer stations for free.


 www.cardinia.vic.gov.au/ewaste



Free waste drop-offs and events

Green waste drop-offs

Cardinia residents can drop off garden waste for free at our events held throughout year.

 www.cardinia.vic.gov.au/dropoff

Detox your Home

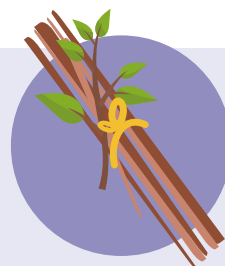
Safely dispose of household chemicals, pesticides and fertilisers for free.

 www.sustainability.vic.gov.au/detoxyourhome

Paintback program

Return unused paint to Future Recycling for free as part of the Paintback program.

 www.paintback.com.au/households



Dumped rubbish and litter



Dumped rubbish is bad for our environment, people's health and safety. It's also expensive to manage and takes resources away from other areas.

Any person or business caught dumping waste can face fines up to \$9000

To help keep our shire clean, we encourage residents to report any littering or dumping to Council. Where possible take photos or record details such as the type of waste, location or vehicle details.

 www.cardinia.vic.gov.au/dumpedrubbish



Illegally Dumped Rubbish Under investigation

Report dumping – www.cardinia.vic.gov.au/dumpedrubbish

Clean up events

Council supports community and school clean-up events like Clean Up Australia Day. Organise an event any time of year and register with Council to have the litter collected afterwards.

 www.cleanup.org.au



Free school resources

Council offers a range of free school waste incursions, lesson plans, resources and information.

 www.cardinia.vic.gov.au/educationprograms



Waste Guide 2023

www.cardinia.vic.gov.au/waste

Cardinia Shire Council

Customer Service Centre
20 Siding Avenue, Officer

Postal address
PO Box 7 Pakenham 3810

Phone: 1300 787 624
Email: mail@cardinia.vic.gov.au
Web: www.cardinia.vic.gov.au

TTY users: 1300 677
(ask for 1300 787 624)

Speak and Listen users:
1300 555 727
(ask for 1300 787 624)



Translating and Interpreting
Service (TIS)

131 450 (ask for 1300 787 624)



For environmental news
and updates, subscribe
to our **Down to Earth**
e-newsletter.



www.cardinia.vic.gov.au/enewsletters

