



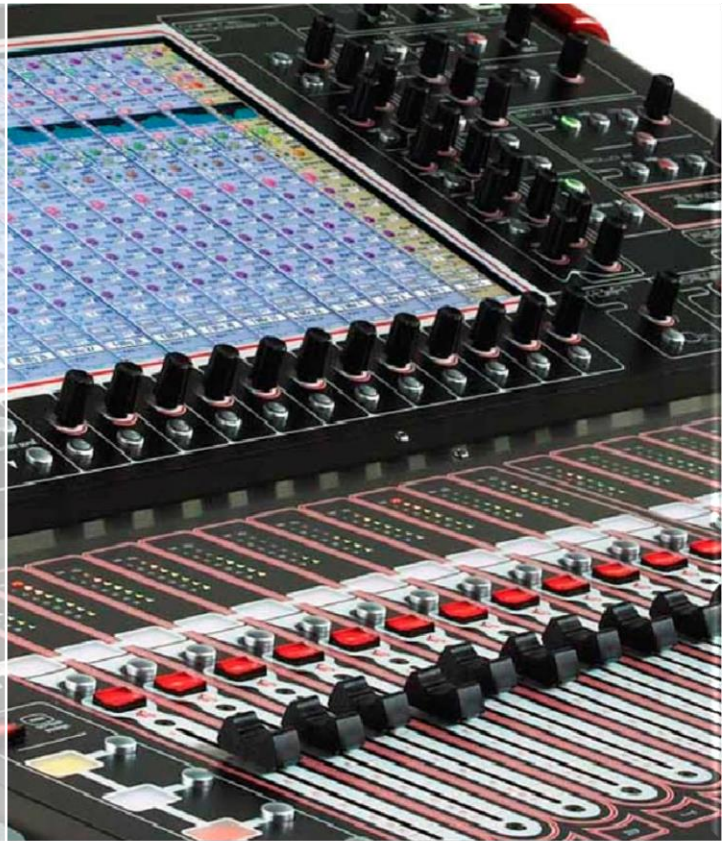
Cardinia Cultural Centre

PAKENHAM • VICTORIA

Technical Specifications

Cardinia Cultural Centre

2020



Technical Manager

Stuart Sinclair

P: (03) 5945 0004

M: 0476 805 200

E: s.sinclair@cardinia.vic.gov.au

Table of Contents

Stage & Dimensions	4
Brief Stage Description:	4
Stage Dimensions:.....	4
Auditorium	4
Orchestra Pit.....	4
Flying Facilities	5
Drapery.....	5
Staging Units	6
Access Equipment.....	6
Safety Curtain.....	6
Loading Dock.....	6
Lighting.....	6
Lighting Positions.....	6
Stage Electrics Bars	6
FOH Bridge.....	6
FOH Perches (PS&OP)	6
Bio Bar(PS&OP)	6
Other LX Patch Locations	6
Dimming	7
Control	7
House Lights.....	7
Lighting Fixtures.....	7
Profiles	7
Fresnel's.....	7
Wash	7
Followspots.....	8
Other Fixtures.....	8
3-Phase Power.....	8
Cable Stock	8
Audio	9
Control Positions.....	9
Control & Amplification.....	9
Primary Mixer	9

Amplifiers..... 9

Speakers 9

Foldback Speakers 9

Play-Back/Recording..... 9

Microphones / Input Gear 9

Audio Accessories 10

Audio Patching 10

Audio Visual..... 10

 Data Projector 10

 Hearing Loop 10

 Digital Media Server 10

 Projection Surface 10

 A/V Play-Back Equipment 10

 A/V Cabling..... 10

BOH..... 11

 Communications 11

 Stage Managers Desk 11

 Talk-Back System..... 11

 Paging / Show Relay 11

 Q-Light System..... 11

 Dressing Rooms 11

 Laundry /Wardrobe..... 11

 Production Facilities 12

 Green Room 12

 Stage Door..... 12

 Orchestral..... 12

 Attachment A – Theatre Stage Plan 13

 Attachment B – Theatre Auditorium Plan..... 14

 Attachment C - Theatre Lighting PlotAttachment D – Theatre Hanging Plot 15

Stage & Dimensions

Brief Stage Description:

Unraked stage with a proscenium arch and no flying facilities. Hardwood floor covered with Weathertex sheets. Screwing into the stage surface is NOT permitted

Stage Distributed Load Limit: 765 Kg/m²

Stage Point Load Limit: 765Kg

Stage Rake: NO

Stage Dimensions:

Proscenium Width: 9.042m **Proscenium Height:** 5.434m

Setting Line: 0mm Upstage of Proscenium

Stage Measurements: (SL: Setting Line, CL: Centre Line)

SL to DS edge of apron:	1.465m
SL to rear wall:	7.476m
DS edge of apron to rear wall	8.918m
CL to OP wall (or obstruction):	8.6m
CL to PS wall (or obstruction):	15.340m

Overhead Obstructions: Fly Galleries located on PS & OP, clearance height 4.528m

See: Attachment A - Theatre Stage Plan

Auditorium

2.35m rise over 12 rows with one aisle only on each side. Space to accommodate 15 wheelchairs In G row

Maximum Seating Capacity: 356 (+32 Temporary if required)

See Attachment B - Auditorium Seating Plan

Orchestra Pit

The orchestra pit is covered by structural flooring sections; the standard venue configuration has the pit covered. These sections can be removed if desired. (3) Cardinia technical staff are required for a 2 hour call to open/close the orchestra pit, this is at the cost of the hirer. This task can at times be completed before arrival by arrangement. If completed during venue booking times, sufficient space must be kept clear for staff to safely complete the job.

Access to the orchestra pit is via the stairs from auditorium seating on the PS.

Orchestra Pit Floor @ 600mm below auditorium

Orchestra Pit Floor @ 1760mm below stage level

Orchestra Pit Dimensions: 9m x 2.4m (DS wall tapers either side of centre)

Maximum Capacity: 15-20 persons

Flying Facilities

The theatre has **NO** fly tower. There are 4 Jands motorised direct drive pile winding winch bar used for electrics only with a weight limit of 300kg per bar. The system is operated from OP Gallery Stage. The supervising technician will oversee all flying of scenery and operate the system at all times.

Venue masking is hung from 7 fixed bars Standard masking configuration includes: Soft Proscenium, 4 sets of legs & 2 borders, 2 sets of tabs and a projection screen

*Electrics Bars may not be relocated. Scenery bars may not be relocated.

Total Number of Lines: 11

Panorama Lines: 0

Batten Drift: See Attachment C – Theatre Hanging Plot

Batten Type: 50mm O/D Alloy Pipe

Batten Length: 12.4m

Batten Extensions: NO

Batten Pickups : 4

Fly Line Safe Working Load (SWL)

Electrics Bars: 300kg

Drapery

House Curtain: Red 2 x 7m x 6.5m @ 80% Fullness

*Please note that the house curtain is motorised (French Action). Travel time is approximately 5 seconds. Control is via the SM console and Control Room.

False Proscenium: 1 Flat Border 14.6m x 3.05m & 2 Flat Legs 1.9m x 7.7m

Legs: (All 50% Full) 8 @ 2m x 6.5m

Borders: (All 50% Full) 2 @ 9m x 1m

Tabs: (All 50% Full) 2 @ 7 m x 6.5m, 2 @ 7m x 6.5m

Cyclorama: White plastic projection screen, 8m x 6m

*All black stage masking is manufactured to A/NZS 1530 Parts 2&3. They are made from inherently fire retardant wool.

Staging Units

8 x Fastfold 1.8m(W) x 2.4m(L) x 60cm (H)

2 x Sets of steps with handrail

Access Equipment

Elevated Work Platform: Snorkel 25UL not motorised vertical lift

Maximum Platform Height: 7.45m

EWP Operating Restrictions: Operators must provide a current license.

Ladders:

1 x 2.4m Fiberglass double sided step ladder

Safety Curtain

The theatre has No fire safety curtain installed

Loading Dock

Truck Access is via a driveway located on Waterford Rise (second driveway coming from Lakeside Blvd) and traverse down the driveway entrance of carpark. The loading dock is 8.5m x 2.5m and is widens past the entrance. There is a decline towards the dock for drainage.

Loading Dock Height: 1.1m

Door Dimensions: 4000mm (H) x 3200mm (W)

Prompt Loading/Set-up Area 8m x 10m

Lighting

Lighting Positions

Stage Electrics Bars

4 on-stage electrics bars @ 12400mm long. 48mm O/D pipe

*All bars are fixed in their position and may not be swung

FOH Bridge

15.7m long,. 48mm O/D pipe

Access via galleries

FOH Perches (PS&OP)

2m of Floor mounted 48mm O/D pipe.

Bio Bar (PS&OP)

2m Floor Mounted 48mm O/D pipe

Other LX Patch Locations

Nil

Dimming

Dimming for the theatre is centralised in the dimmer room, located PS Gallery. All lighting patches run direct to a dimmer. No sub patch is required.

Total Number of Dimmers: 60

Dimmer Type: LSC (2.4k capacity)

Other Dimmers Available: Nil

Control

Lighting Desk: High End Full Boar 4 and playback wing

NB: We do not remove the lighting console from its standard position

Control Channels: 4 Universes

Signal Output: DMX512, Artnet

Signal Distribution: 2x DMX Rings

Remote Riggers: No

House Lights

Stand-Alone Control: Available from PS Rack or Control room. 100%, 50%, 0% Presets. Fixed Fade Time.

DMX Control: Not currently available.

Lighting Fixtures

Profiles

Make	Model	Beam Angle	Accessories	Wattage	Total	Lamp
Selecon	Acclaim	18/34	Some Gel Holders	600w	22	GKV
Selecon	Acclaim	24/44	Some Gel Holders	600w	4	GKV
EK	EProfile HP	15/30		200w	6	N/A

Fresnel's

Make	Model	Accessories	Wattage	Total	Lamp
Selecon	Compact	(8) Barn-doors, some Gel Holders	1200w	7	T29

Wash

Make	Model	Accessories	Wattage	Total	Lamp
Silverstar	LED Cyc	RGBA-Lime LED Cyc Unit	190w	5	N/A

Followspots

Make	Model	Beam Angle	Accessories	Wattage	Total	Lamp
Robert Juliet	Cricket	10.5-22.5	6 colour magazine*	1000w	1	CP 40/ CP 71

Other Fixtures

Make	Model	Details/Accessories	Wattage	Total	Lamp
Pro Shop	UV LED	UV LED		4	
Pro Shop	HO Bars	LED Bars*		17	
	Mirror Ball	12 inch with motor control		1	
Martin	Fog Machine	Local/DMX Control*		1	
Unique	Hazer	Local/DMX Control		1	
	RGB LED Par	LED Par RGB		8	
Robe	Robin 300E Classic	Moving Light		4	
		2 x Floor Stands (H Stands)*		2	
		7 x Gobo holders (Size M)		8	

* Denotes fixtures in storage, please consult technical coordinator if these fixtures are required.

3-Phase Power

- 5x 40A PS Gallery
- 1 x 40A OP Gallery
- 1 x 40A PS
- 1 x 40A OP
- 1 x Gantry 1
- 1 x Gantry 2
- 2 x FOH

Cable Stock

- The theatre has a Limited stock of 10A 240V Extension leads to suit most requirements
- 3 x 25m 6-Way 10A Weiland Looms

Audio

Control Positions

Control Room: Located above the rear of the auditorium, standard location for house console

Other: Other locations by arrangement only. (House desk will not be moved from its location)

Control & Amplification

Primary Mixer

DiGiCo SD9-24 Digital Console 48 Flexi Channels (mono or stereo), 24 busses(mono or stereo), 8 control groups, 16 x 32 Band Graphic Eq's, 8 onboard FX units, 15 inch touch screen

NB: We do not remove the Sound console from its standard position

I/O Hardware:

Local - 8in/8out Mic/Line, 4x AES
 PS Stage MaDi Rack - 48in/16out (fixed location)
 Portable MaDi Rack- 32in/8out
 DiGiGrid MGB

Amplifiers

Nil

Speakers

3 x QSC KW 122 1000w Powered Speakers

2 x QSC KW 181 1000w Powered Subwoofers

Foldback Speakers

4x RCF ART 735

2 x JBL EON 15 Speakers

Play-Back/Recording

Make	Model	Details/Accessories	Total
Tascam	200SB	CD/USB/SD Player –in control room	2

Microphones / Input Gear

Make	Model	Details/Accessories	Total
Sennheiser	G3 500	Hand Held Radio Mics Or body Pack	8
Jag	IMX6A	Headset Mics	8
Shure	SM58	Dynamic Vocal Mic	6
Shure	SM57	Dynamic Vocal Mic	7
Sennheiser	E904	Cardoid Microphone	4
Shure	Beta 52	Kick Drum Mic	1
Rhode	NT5	Condenser Mic	2
Rhode	M5	Condenser Mic	8
Shure	EZO	Cardioid Condenser Hanging Choir Mic	4
BSS	Single Active DI	Active Di	4
Radial	Stereo Passive Di	Stereo Passive Di	2
Radial	USB DI	USB DI	1
Shure	MX418/c	Condenser Gooseneck Mic	2

Audio Accessories

11x Boom Mic Stands

4x Short Stands with round base

5x Round Base Straight Stands

2x Music Stands

Audio Patching

Limited Analogue Patching is available from:

DSPS , DSOP , and Orchestra Pit

Audio Visual

Data Projector

- 1 x Epson EB-L1405UNL 8000 ANSI-lumen WUXGA 3LCD Data/Video Projector
- Projector is rigged in the auditorium beneath FOH Gantry 2. 10.7m from FOH Curtain and 18m from Cyc

Hearing Loop

1x Ampetronic ILD120 Hearing Loop Amplifier

Digital Media Server

Arkaos Media Master Express driven by Mac Mini via Artnet. Media must be USB

Projection Surface

Cyclorama Screen: White plastic projection screen, 8m x 6m

A/V Play-Back Equipment

-Laptops & media server available on request.

A/V Cabling

- The theatre has a limited stock of AV cable to suit its equipment.

BOH

Communications

Stage Managers Desk

Nil

Talk-Back System

Master Unit: Creative Audio C120

Total Sub Stations: 6 Belt-Packs

Total Headsets: 7

Radio Units: Nil

Talk-Back Patching Locations: Control Room (4)
 Stage Managers Rack
 Orchestra Pit
 USPS
 DSOP
 USOP
 Production Desk (Row G)
 Tech Office

Paging / Show Relay

- No Paging to BOH areas
- Show relay audio to BOH locations
- Show relay video to BOH locations

Q-Light System

Nil

Dressing Rooms

Dressing Room	Capacity	Area Sq. m	Size
Dressing Room 1	6	12	3m wide x 4m Length
Dressing Room 2	6	18.75	2.3m wide x 4m Length
Dressing Room 3	30	31.5	4.5m wide x 7m Length
Dressing Room 4	25	22.5	4.5m wide x 5m Length
Dance Studio	110	117	9m Wide x 13m Length

Laundry /Wardrobe

Washing Machine: No (there is facilities offsite nearby)

Clothes Dryer: No (there is facilities offsite nearby)

Drying Room: No

Iron/Boards: Yes, 1

Clothes Racks: Yes, 6 Portable

Production Facilities

Production Desk: Facilities include lighting data, Comms, DMX and audio ties

Production Office: NO

Internet Access: Yes, Public WIFI

Green Room

Tea/Coffee Facilities: Yes, Zip boil unit

Fridge/Freezer: Yes

Microwave: Yes

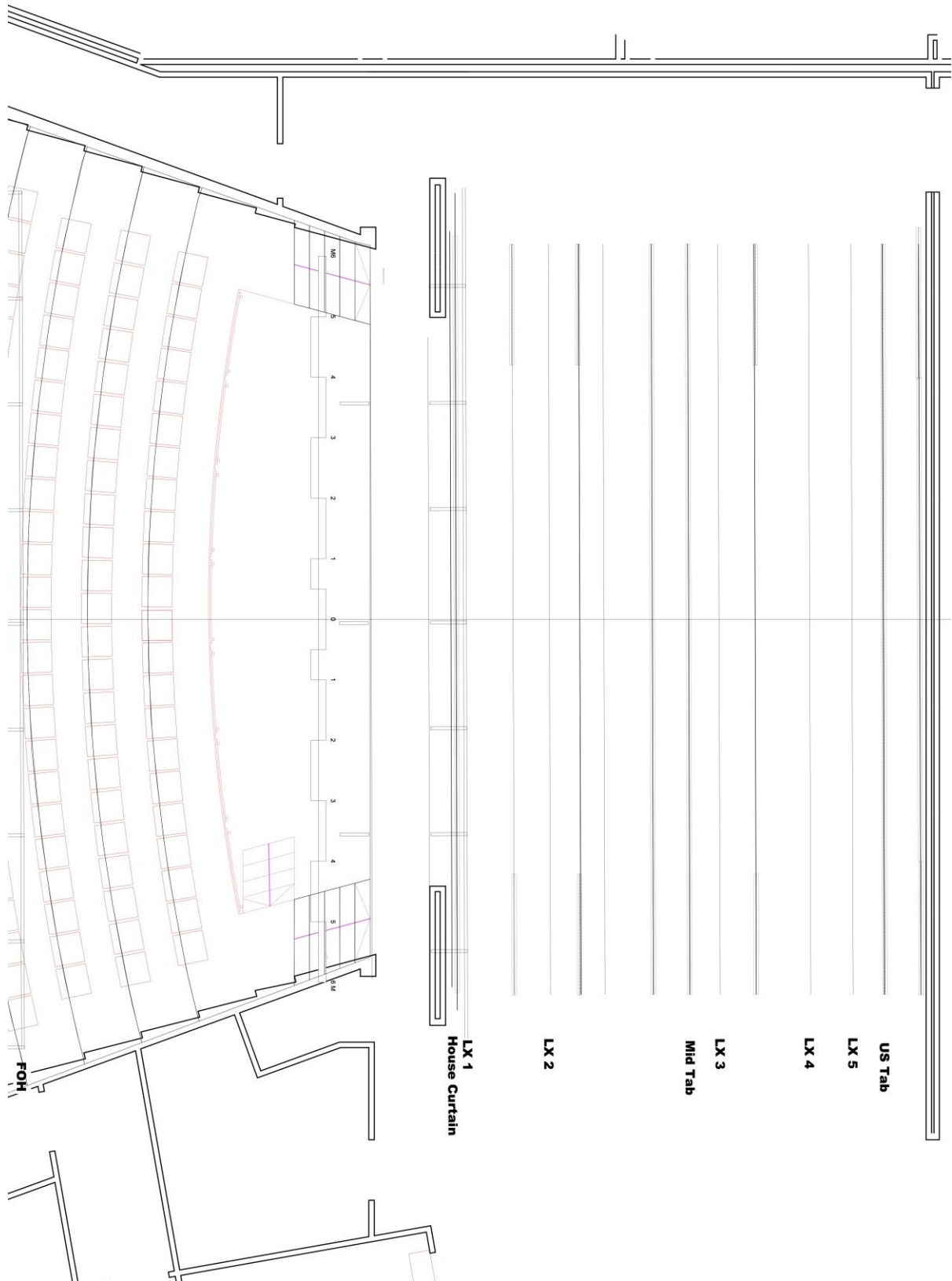
Stage Door

-Stage Door is located at the loading dock

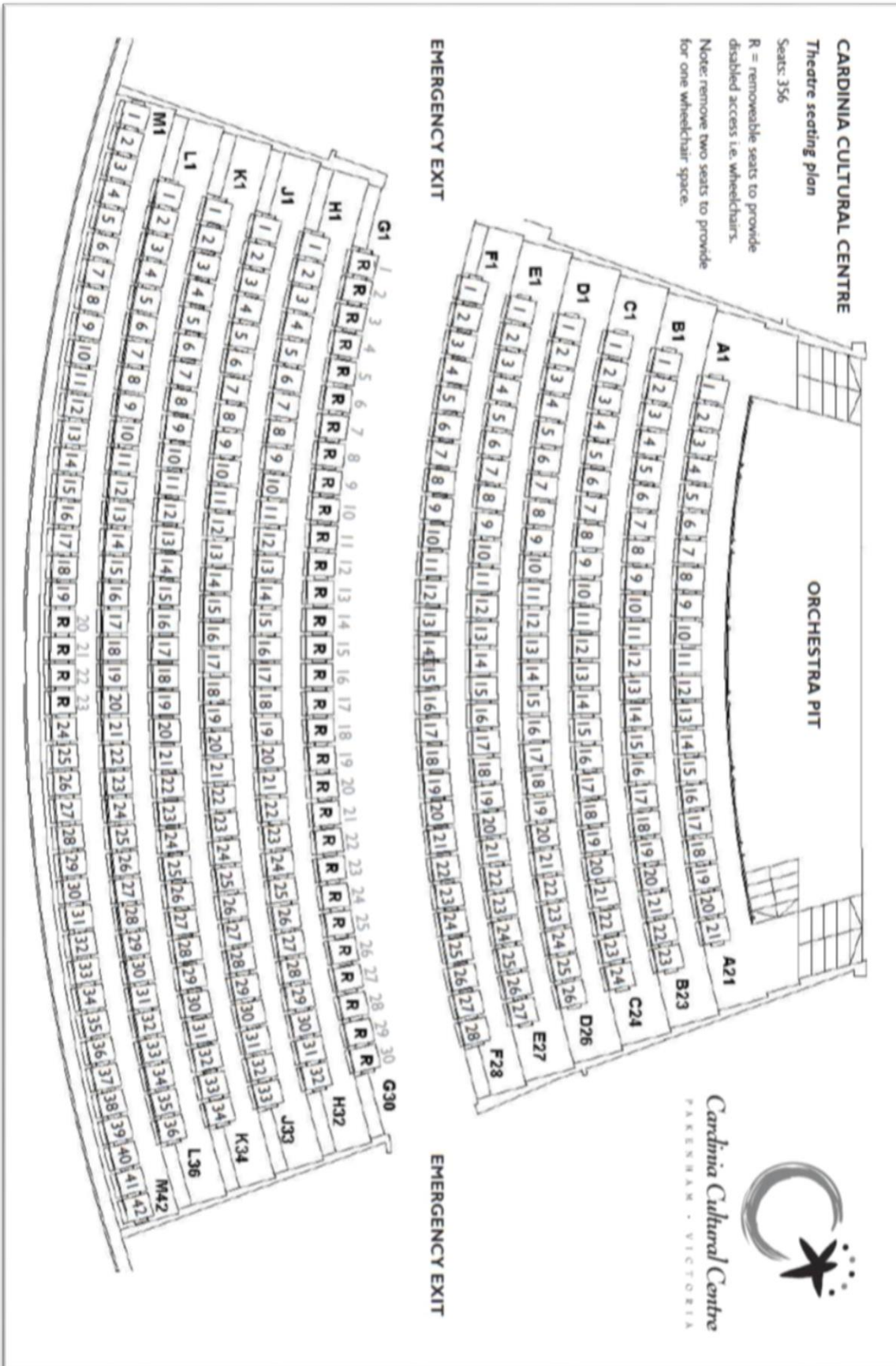
Orchestral

-Yamaha C3 Grand Piano.

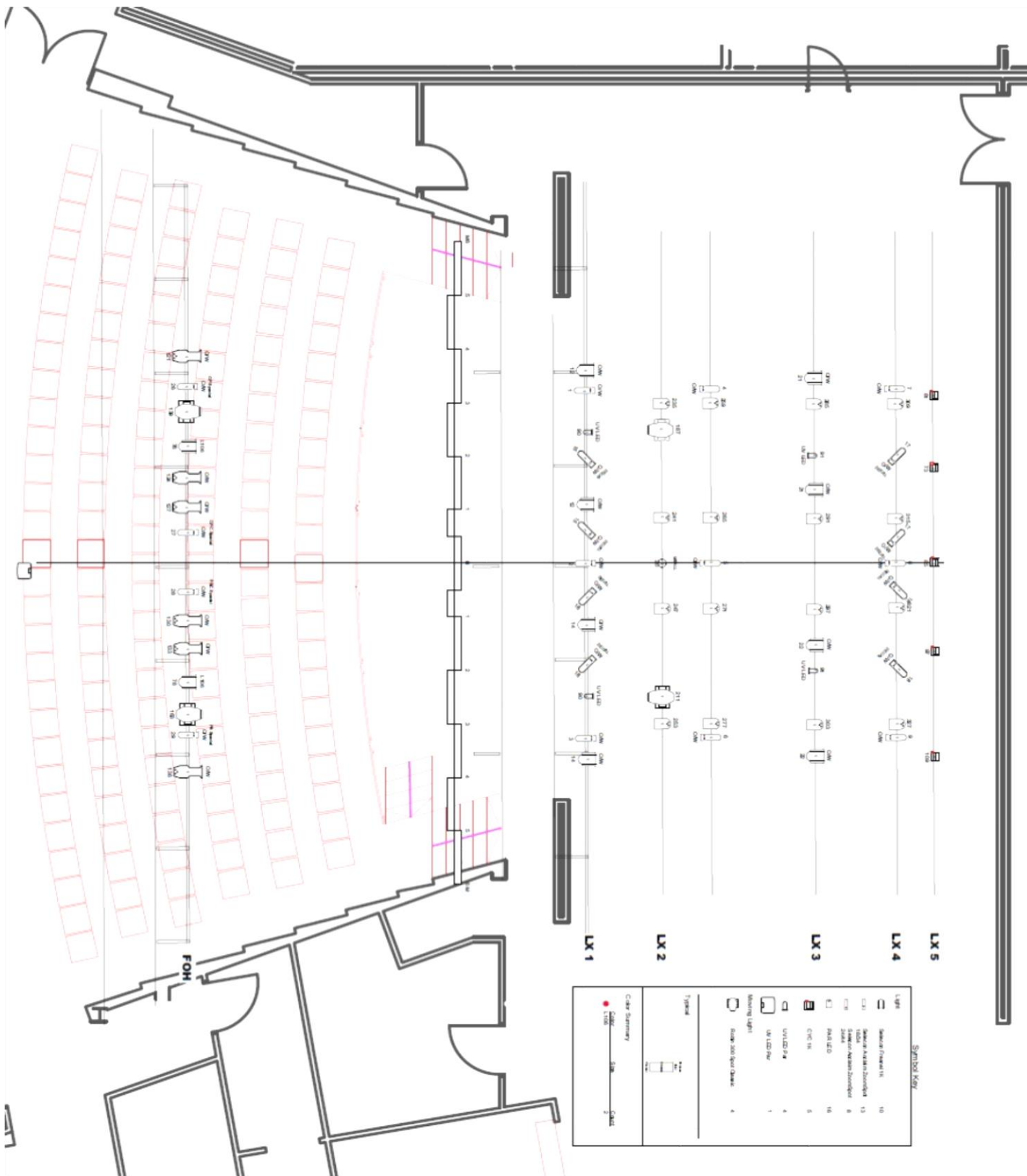
Attachment A – Theatre Stage Plan



Attachment B – Theatre Auditorium Plan



Attachment C - Theatre Lighting Plot



Symbol Key	
Light	Symbol (Fixture ID)
CL1	Shawar 4x16W/3000K/4 13
CL2	Shawar 4x16W/3000K/4 13
CL3	Shawar 4x16W/3000K/4 13
CL4	Shawar 4x16W/3000K/4 13
CL5	Shawar 4x16W/3000K/4 13
CL6	Shawar 4x16W/3000K/4 13
CL7	Shawar 4x16W/3000K/4 13
CL8	Shawar 4x16W/3000K/4 13
CL9	Shawar 4x16W/3000K/4 13
CL10	Shawar 4x16W/3000K/4 13
CL11	Shawar 4x16W/3000K/4 13
CL12	Shawar 4x16W/3000K/4 13
CL13	Shawar 4x16W/3000K/4 13
CL14	Shawar 4x16W/3000K/4 13
CL15	Shawar 4x16W/3000K/4 13
CL16	Shawar 4x16W/3000K/4 13
CL17	Shawar 4x16W/3000K/4 13
CL18	Shawar 4x16W/3000K/4 13
CL19	Shawar 4x16W/3000K/4 13
CL20	Shawar 4x16W/3000K/4 13
CL21	Shawar 4x16W/3000K/4 13
CL22	Shawar 4x16W/3000K/4 13
CL23	Shawar 4x16W/3000K/4 13
CL24	Shawar 4x16W/3000K/4 13
CL25	Shawar 4x16W/3000K/4 13
CL26	Shawar 4x16W/3000K/4 13
CL27	Shawar 4x16W/3000K/4 13
CL28	Shawar 4x16W/3000K/4 13
CL29	Shawar 4x16W/3000K/4 13
CL30	Shawar 4x16W/3000K/4 13
CL31	Shawar 4x16W/3000K/4 13
CL32	Shawar 4x16W/3000K/4 13
CL33	Shawar 4x16W/3000K/4 13
CL34	Shawar 4x16W/3000K/4 13
CL35	Shawar 4x16W/3000K/4 13
CL36	Shawar 4x16W/3000K/4 13
CL37	Shawar 4x16W/3000K/4 13
CL38	Shawar 4x16W/3000K/4 13
CL39	Shawar 4x16W/3000K/4 13
CL40	Shawar 4x16W/3000K/4 13
CL41	Shawar 4x16W/3000K/4 13
CL42	Shawar 4x16W/3000K/4 13
CL43	Shawar 4x16W/3000K/4 13
CL44	Shawar 4x16W/3000K/4 13
CL45	Shawar 4x16W/3000K/4 13
CL46	Shawar 4x16W/3000K/4 13
CL47	Shawar 4x16W/3000K/4 13
CL48	Shawar 4x16W/3000K/4 13
CL49	Shawar 4x16W/3000K/4 13
CL50	Shawar 4x16W/3000K/4 13
CL51	Shawar 4x16W/3000K/4 13
CL52	Shawar 4x16W/3000K/4 13
CL53	Shawar 4x16W/3000K/4 13
CL54	Shawar 4x16W/3000K/4 13
CL55	Shawar 4x16W/3000K/4 13
CL56	Shawar 4x16W/3000K/4 13
CL57	Shawar 4x16W/3000K/4 13
CL58	Shawar 4x16W/3000K/4 13
CL59	Shawar 4x16W/3000K/4 13
CL60	Shawar 4x16W/3000K/4 13
CL61	Shawar 4x16W/3000K/4 13
CL62	Shawar 4x16W/3000K/4 13
CL63	Shawar 4x16W/3000K/4 13
CL64	Shawar 4x16W/3000K/4 13
CL65	Shawar 4x16W/3000K/4 13
CL66	Shawar 4x16W/3000K/4 13
CL67	Shawar 4x16W/3000K/4 13
CL68	Shawar 4x16W/3000K/4 13
CL69	Shawar 4x16W/3000K/4 13
CL70	Shawar 4x16W/3000K/4 13
CL71	Shawar 4x16W/3000K/4 13
CL72	Shawar 4x16W/3000K/4 13
CL73	Shawar 4x16W/3000K/4 13
CL74	Shawar 4x16W/3000K/4 13
CL75	Shawar 4x16W/3000K/4 13
CL76	Shawar 4x16W/3000K/4 13
CL77	Shawar 4x16W/3000K/4 13
CL78	Shawar 4x16W/3000K/4 13
CL79	Shawar 4x16W/3000K/4 13
CL80	Shawar 4x16W/3000K/4 13
CL81	Shawar 4x16W/3000K/4 13
CL82	Shawar 4x16W/3000K/4 13
CL83	Shawar 4x16W/3000K/4 13
CL84	Shawar 4x16W/3000K/4 13
CL85	Shawar 4x16W/3000K/4 13
CL86	Shawar 4x16W/3000K/4 13
CL87	Shawar 4x16W/3000K/4 13
CL88	Shawar 4x16W/3000K/4 13
CL89	Shawar 4x16W/3000K/4 13
CL90	Shawar 4x16W/3000K/4 13
CL91	Shawar 4x16W/3000K/4 13
CL92	Shawar 4x16W/3000K/4 13
CL93	Shawar 4x16W/3000K/4 13
CL94	Shawar 4x16W/3000K/4 13
CL95	Shawar 4x16W/3000K/4 13
CL96	Shawar 4x16W/3000K/4 13
CL97	Shawar 4x16W/3000K/4 13
CL98	Shawar 4x16W/3000K/4 13
CL99	Shawar 4x16W/3000K/4 13
CL100	Shawar 4x16W/3000K/4 13

Attachment D – Theatre Hanging Plot

Line Number	Distance from SL (mm)	Venue Standard Allocation	Stage to Grid
Fixed	370	Lighting Bar 1 (LX1)	7000
Fixed	900	Legs 1 LX 1.5	7000
Motor 1	1500	Lighting Bar 2 (LX2)	6300
Fixed	2100	Legs & Border 2	7000
Fixed	2650	LX 2.5	7000
Fixed	3200	Border 3	7000
Fixed	3750	Mid Tab	7000
Motor 2	4300	Lighting Bar 3 (LX3)	7000
Fixed	5000	Legs 3	7000
Motor 3	5700	Lighting Bar 4 (LX4)	7000
Fixed	6400	Lighting Bar 5 (LX5)	7000
Fixed	7100	US Tabs	7000
Motor 4	7700	Screen	7000