

Bowman's Track

Bowman's Track, constructed in 1862, was instigated by publican Janet Bowman to facilitate access for travellers from Beaconsfield to the Jordan Goldfields in the Yarra Valley. The 80-kilometre track starts at Cardinia Creek (near Mrs Bowman's hotel) and heads northward, linking with Hughes Track (from the south through Tarago Valley).

Janet Bowman and her husband David came from Scotland to Beaconsfield in the early 1850s. In 1855, David was granted a licence for the 'Gippsland Hotel', also known as 'Bowman's Inn', on the Cardinia Creek site now occupied by Central Hotel, in Beaconsfield. When David died in 1860 Janet became licensee for the hotel.

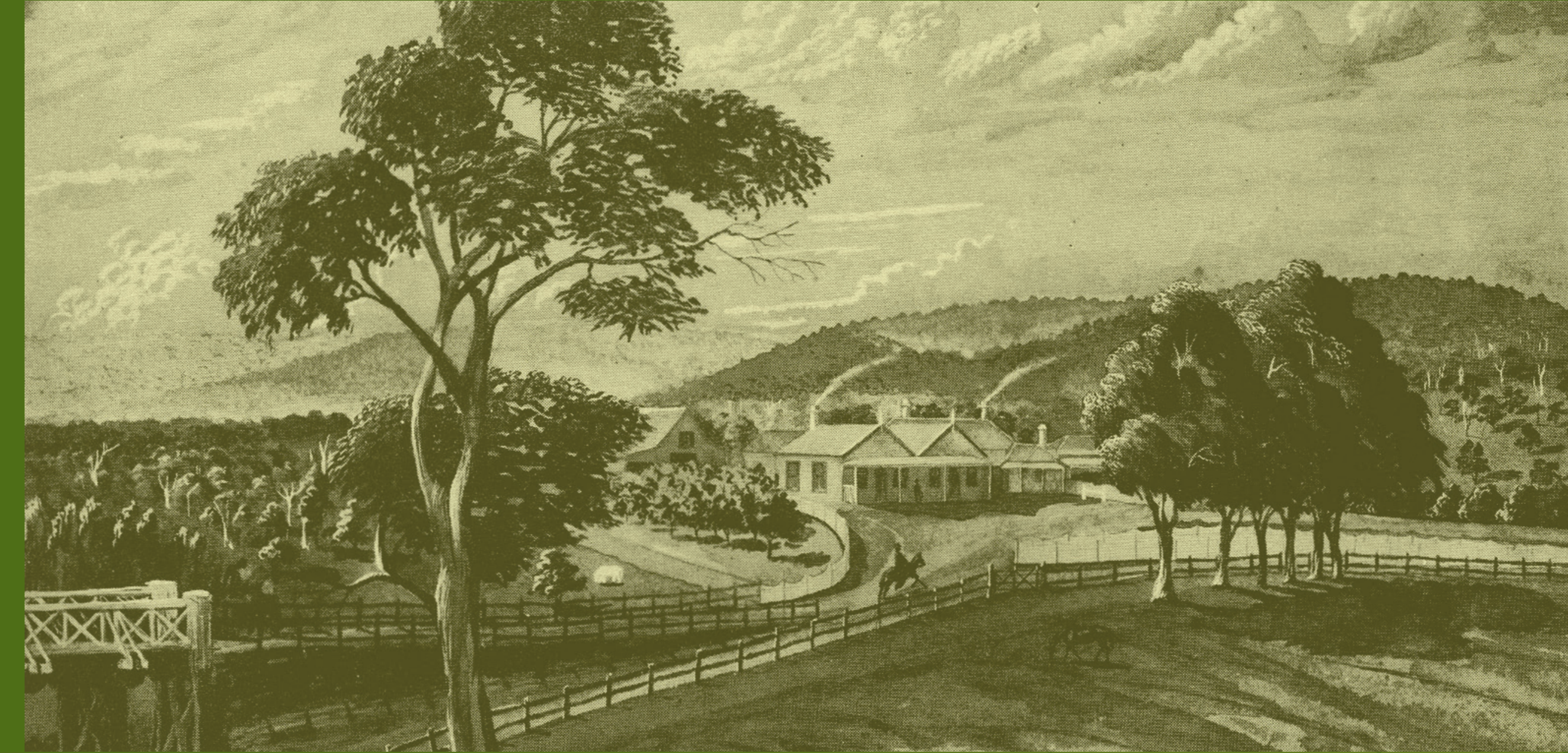
The cost of cutting Bowman's Track was borne by Mrs Bowman who employed three to six men to work on the track, including her four sons. The track brought gold miners right past her hotel and lodgings.

In 1988, Australia's Bicentenary Year, Pakenham Shire Council and Berwick-Pakenham Historical Society erected a plaque and signs along the track.

In 2018, Cardinia Shire Council renewed the Bowman's Track sign.



Mrs Janet Bowman. Photo courtesy Dandenong and District Historical Society



Bowman's Inn (c1860). Photo courtesy of Beaumont family from the book Early days of Berwick and its surrounding districts



Markers

1. **Main marker: O'Neil Road and Janet Bowman Boulevard**
2. O'Neil and Hughendon roads
3. Salisbury and Split Rock roads
4. Beaconsfield-Emerald and Downey roads
5. Bourke's Creek and Matters roads
6. Matters and Paternoster roads
7. Mount Burnett and Gembrook roads
8. Gembrook and Boyd roads
9. The Avenue and Gembrook-Tonimbuk Road
10. Parker and East Beenak roads
11. East Beenak and Black Snake Creek roads
12. East Beenak and Bunyip Valley roads
13. Basan's Corner

Please be aware that this map is illustrative and for information only. It has been based on historical information that may not be accurate today; for example, road names may have changed and some noted features may no longer exist.

Contact Council:
1300 787 624
www.cardinia.vic.gov.au

Bowman's Track

Bowman's Track, constructed in 1862, was instigated by publican Janet Bowman to facilitate access for travellers from Beaconsfield to the Jordan Goldfields in the Yarra Valley. The 80-kilometre track starts at Cardinia Creek (near Mrs Bowman's hotel) and heads northward, linking with Hughes Track (from the south through Tarago Valley).

Janet Bowman and her husband David came from Scotland to Beaconsfield in the early 1850s. In 1855, David was granted a licence for the 'Gippsland Hotel', also known as 'Bowman's Inn', on the Cardinia Creek site now occupied by Central Hotel, in Beaconsfield. When David died in 1860 Janet became licensee for the hotel.

The cost of cutting Bowman's Track was borne by Mrs Bowman who employed three to six men to work on the track, including her four sons. The track brought gold miners right past her hotel and lodgings.

In 1988, Australia's Bicentenary Year, Pakenham Shire Council and Berwick-Pakenham Historical Society erected a plaque and signs along the track.

In 2018, Cardinia Shire Council renewed the Bowman's Track sign.



Mrs Janet Bowman. Photo courtesy Dandenong and District Historical Society



Bowman's Inn (c1860). Photo courtesy of Beaumont family from the book Early days of Berwick and its surrounding districts



Markers

1. **Main marker: O'Neil Road and Janet Bowman Boulevard**
2. O'Neil and Hughendon roads
3. Salisbury and Split Rock roads
4. Beaconsfield-Emerald and Downey roads
5. Bourke's Creek and Matters roads
6. Matters and Paternoster roads
7. Mount Burnett and Gembrook roads
8. Gembrook and Boyd roads
9. The Avenue and Gembrook-Tonimbuk Road
10. Parker and East Beenak roads
11. East Beenak and Black Snake Creek roads
12. East Beenak and Bunyip Valley roads
13. Basan's Corner

Please be aware that this map is illustrative and for information only. It has been based on historical information that may not be accurate today; for example, road names may have changed and some noted features may no longer exist.

Contact Council:
1300 787 624
www.cardinia.vic.gov.au