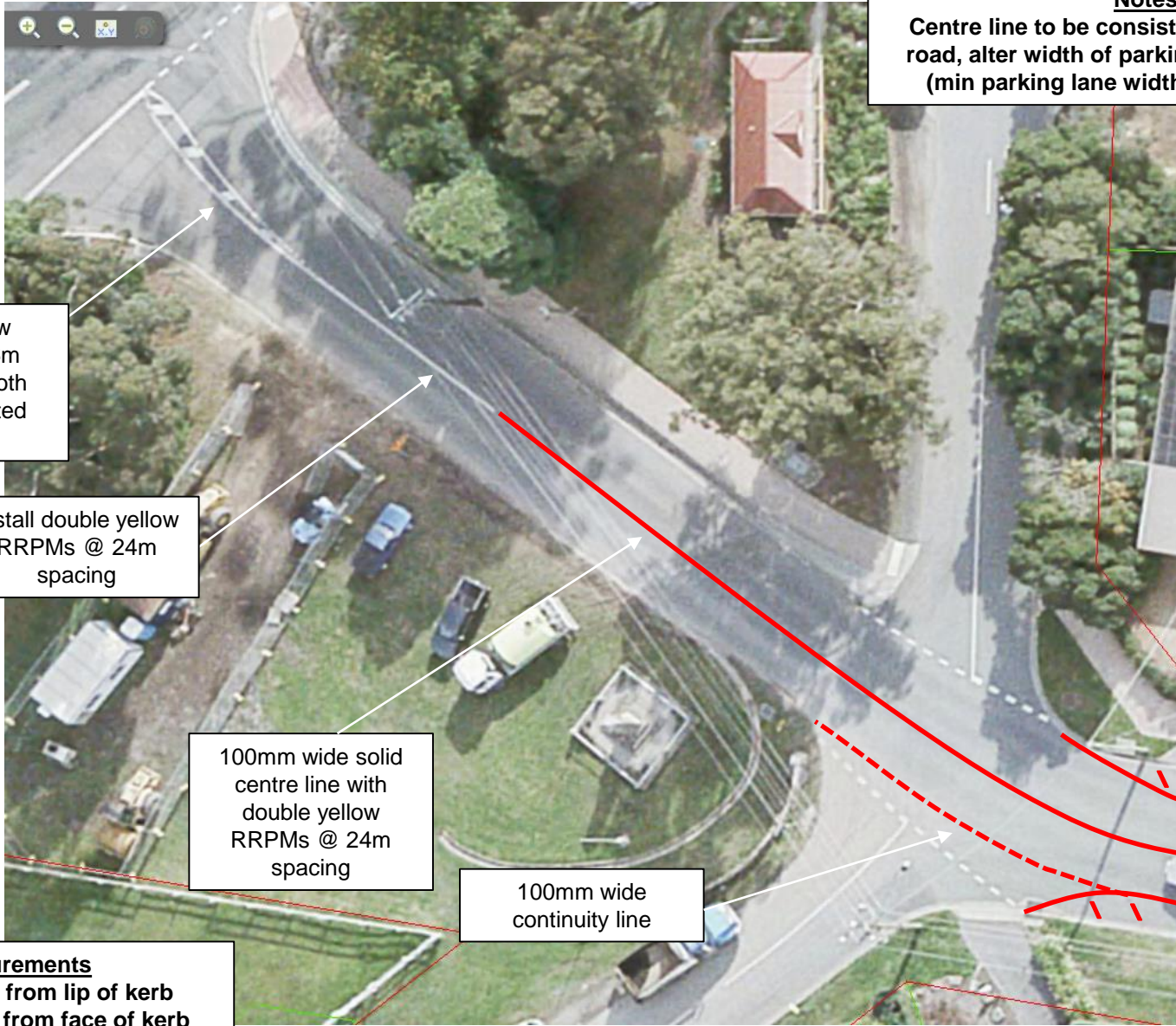




August 2017

PROPOSED LINE MARKING CHANGES
IN SALISBURY ROAD, BEACONSFIELD UPPER





Notes
Centre line to be consistent along length of road, alter width of parking lanes if required (min parking lane width should be 1.8m)

Install yellow RRPMs @ 6m spacing on both sides of painted island

Install double yellow RRPMs @ 24m spacing

100mm wide solid centre line with double yellow RRPMs @ 24m spacing

100mm wide continuity line

Measurements
Traffic Lanes: from lip of kerb
Parking Lanes: from face of kerb

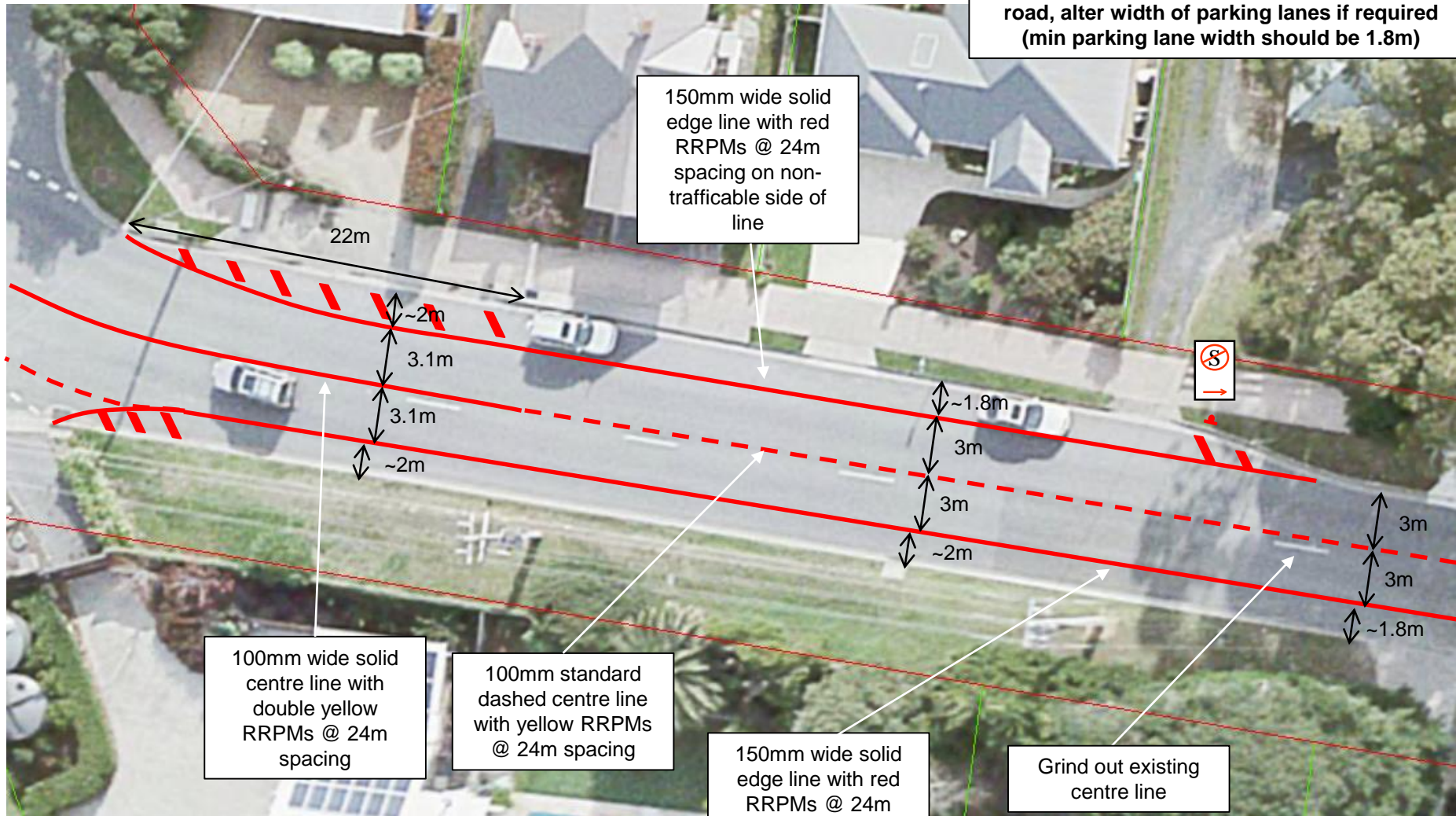


August 2017

PROPOSED LINE MARKING CHANGES IN SALISBURY ROAD, BEACONSFIELD UPPER



Notes
 Centre line to be consistent along length of road, alter width of parking lanes if required (min parking lane width should be 1.8m)



100mm wide solid centre line with double yellow RRPMs @ 24m spacing

100mm standard dashed centre line with yellow RRPMs @ 24m spacing

150mm wide solid edge line with red RRPMs @ 24m spacing on non-trafficable side of line

Grind out existing centre line

Measurements
 Traffic Lanes: from lip of kerb
 Parking Lanes: from face of kerb

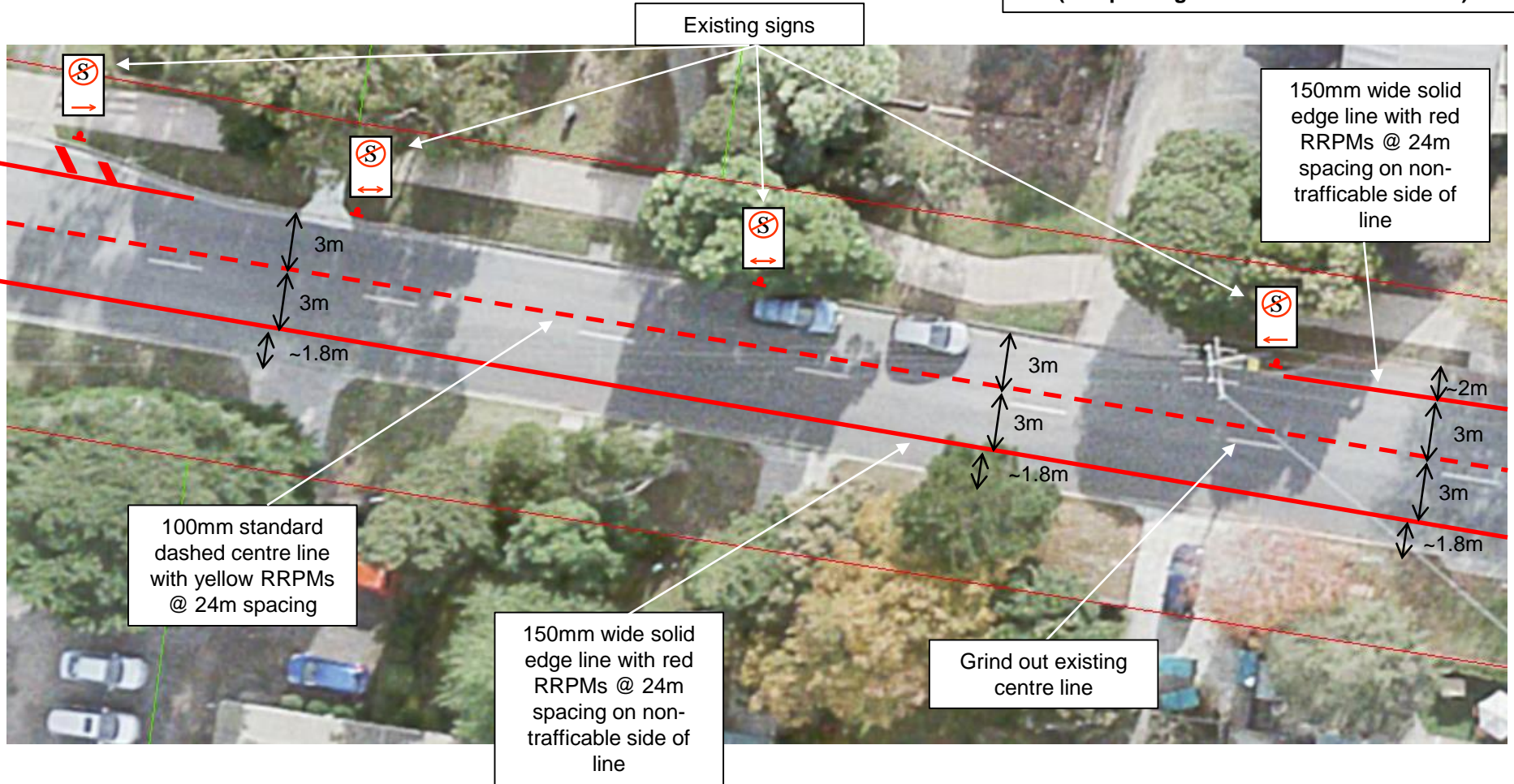


August 2017

**PROPOSED LINE MARKING CHANGES
 IN SALISBURY ROAD, BEACONSFIELD UPPER**



Notes
 Centre line to be consistent along length of road, alter width of parking lanes if required (min parking lane width should be 1.8m)



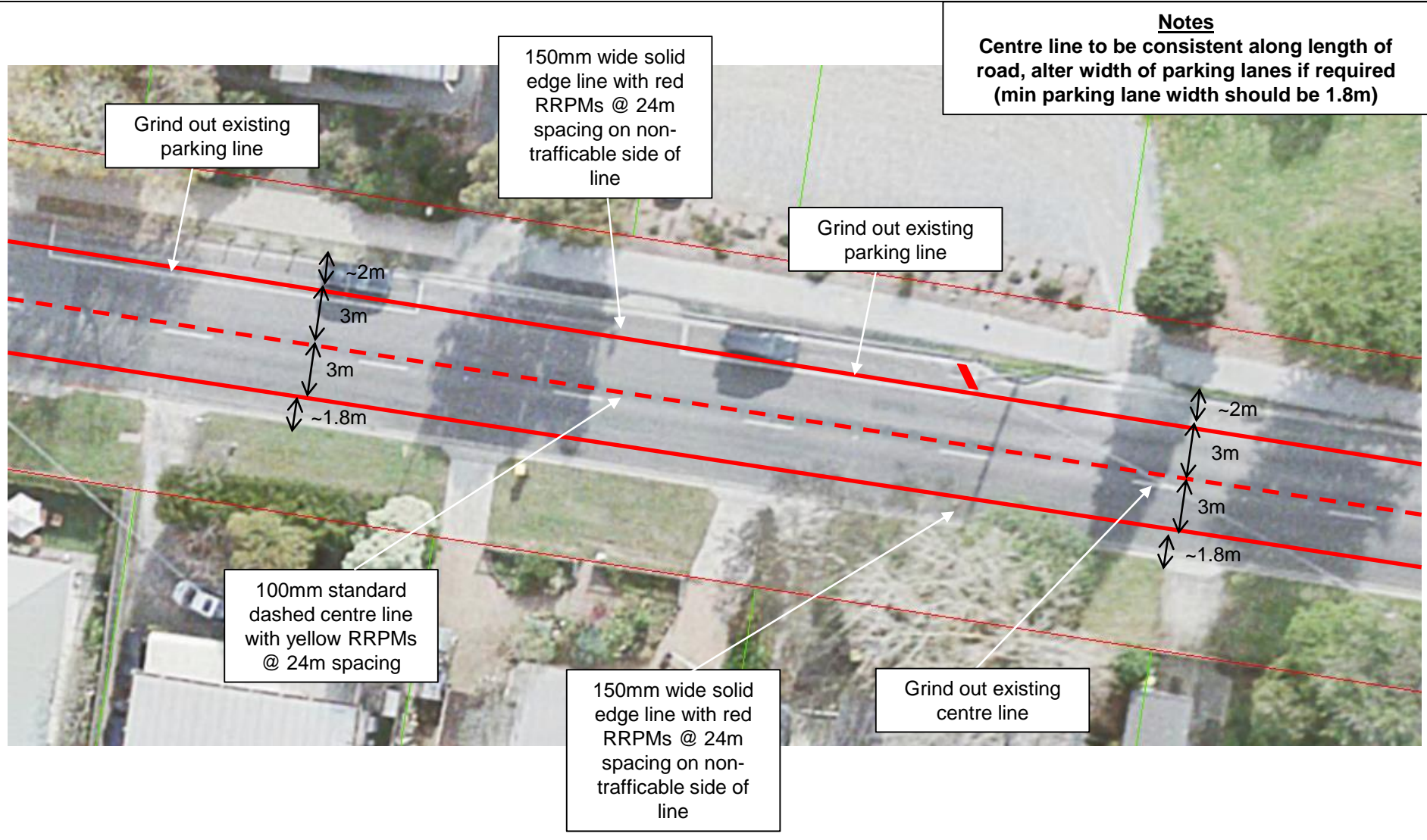
Measurements
 Traffic Lanes: from lip of kerb
 Parking Lanes: from face of kerb



August 2017

**PROPOSED LINE MARKING CHANGES
 IN SALISBURY ROAD, BEACONSFIELD UPPER**





Notes
 Centre line to be consistent along length of road, alter width of parking lanes if required (min parking lane width should be 1.8m)

Grind out existing parking line

150mm wide solid edge line with red RRPMs @ 24m spacing on non-trafficable side of line

Grind out existing parking line

100mm standard dashed centre line with yellow RRPMs @ 24m spacing

150mm wide solid edge line with red RRPMs @ 24m spacing on non-trafficable side of line

Grind out existing centre line

Measurements
 Traffic Lanes: from lip of kerb
 Parking Lanes: from face of kerb

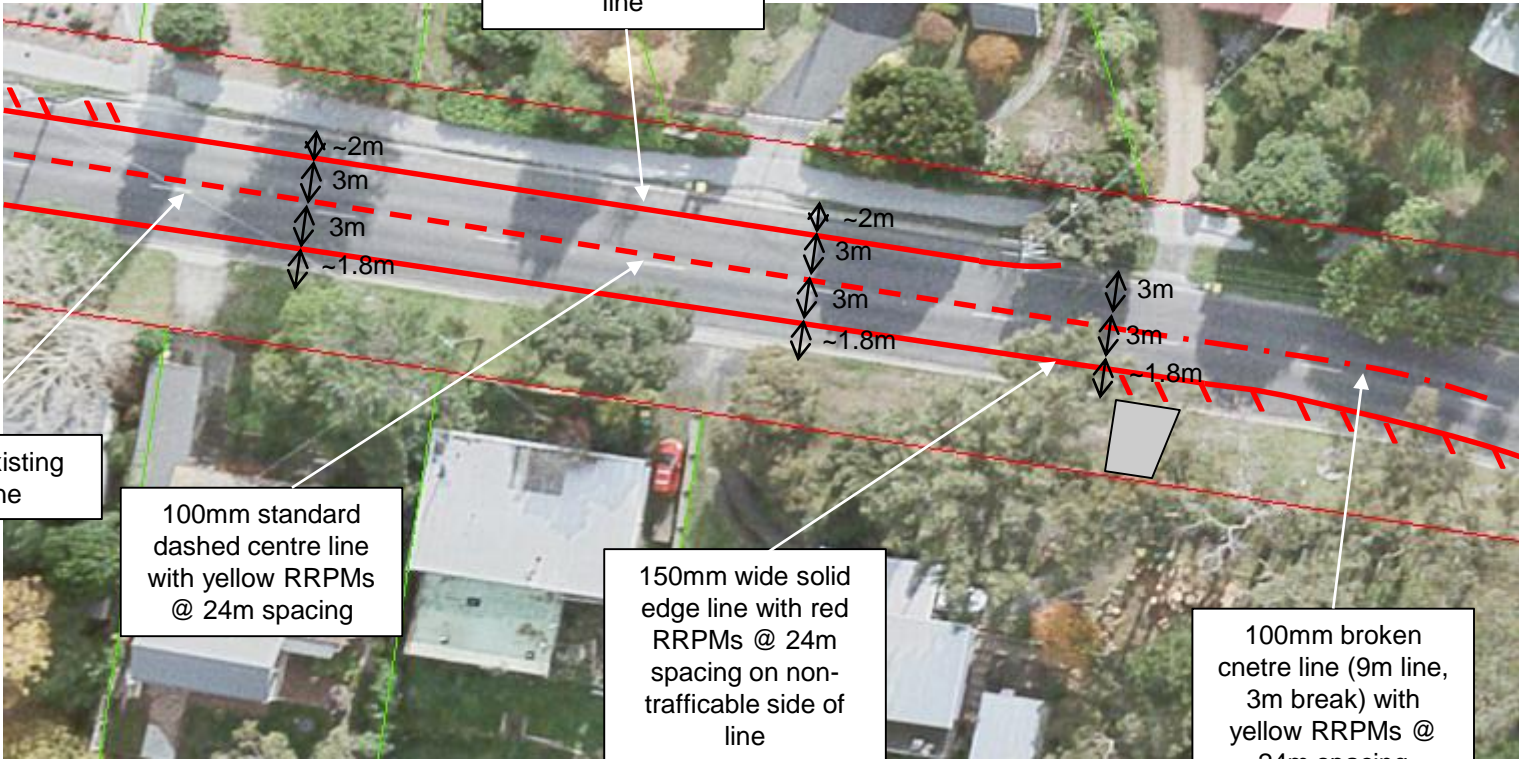
August 2017

**PROPOSED LINE MARKING CHANGES
 IN SALISBURY ROAD, BEACONSFIELD UPPER**



Notes
 Centre line to be consistent along length of road, alter width of parking lanes if required (min parking lane width should be 1.8m)

150mm wide solid edge line with red RRPMs @ 24m spacing on non-trafficable side of line



Grind out existing centre line

100mm standard dashed centre line with yellow RRPMs @ 24m spacing

150mm wide solid edge line with red RRPMs @ 24m spacing on non-trafficable side of line

100mm broken centre line (9m line, 3m break) with yellow RRPMs @ 24m spacing

Measurements
 Traffic Lanes: from lip of kerb
 Parking Lanes: from face of kerb

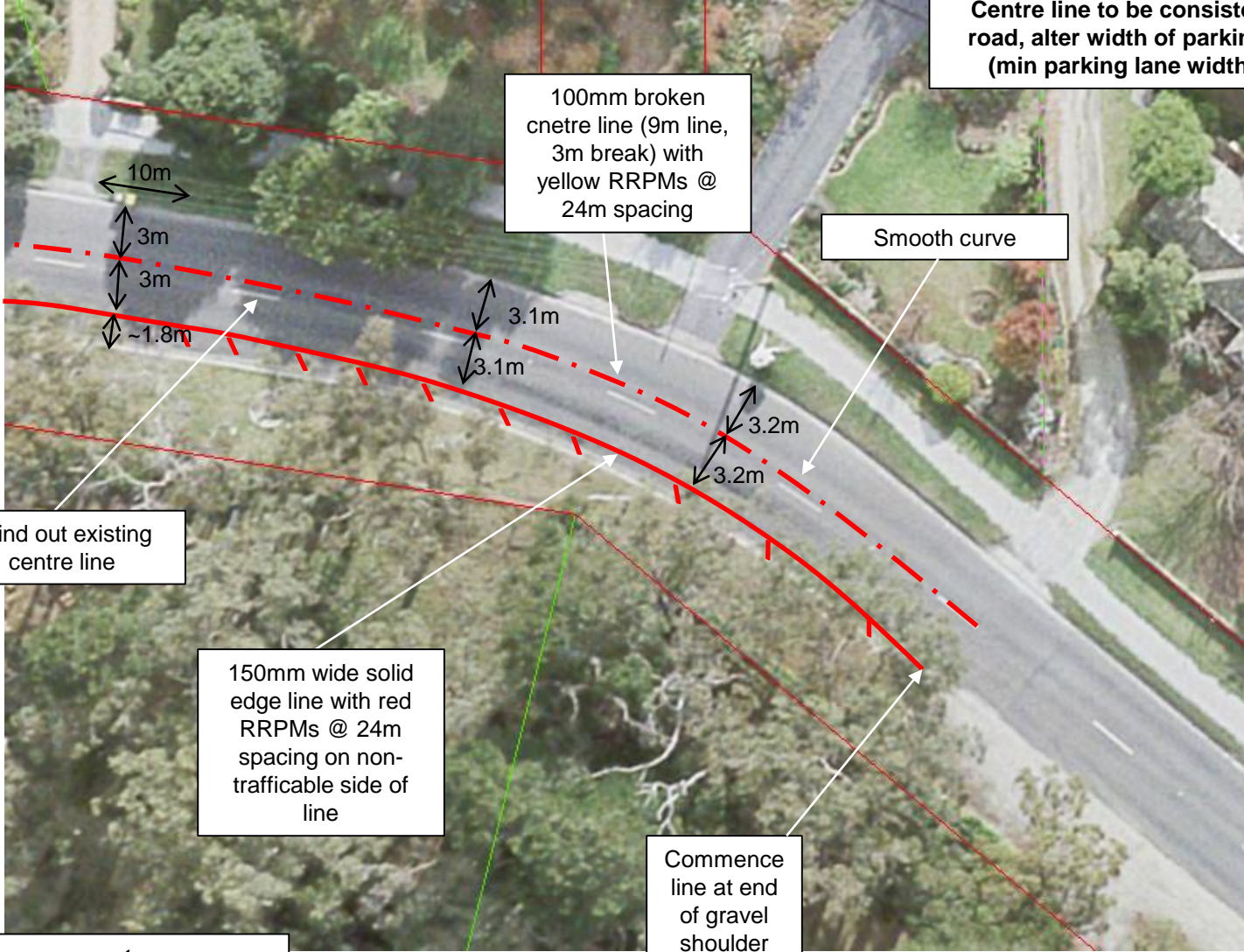
August 2017

**PROPOSED LINE MARKING CHANGES
 IN SALISBURY ROAD, BEACONSFIELD UPPER**



Notes

Centre line to be consistent along length of road, alter width of parking lanes if required (min parking lane width should be 1.8m)



100mm broken centre line (9m line, 3m break) with yellow RRPMS @ 24m spacing

Smooth curve

Grind out existing centre line

150mm wide solid edge line with red RRPMS @ 24m spacing on non-trafficable side of line

Commence line at end of gravel shoulder

10m
3m
3m
~1.8m

3.1m
3.1m

3.2m
3.2m

Measurements

Traffic Lanes: from lip of kerb
Parking Lanes: from face of kerb



August 2017

**PROPOSED LINE MARKING CHANGES
IN SALISBURY ROAD, BEACONSFIELD UPPER**

